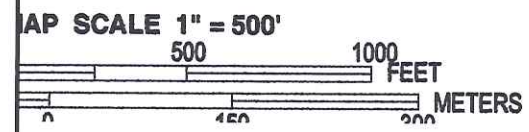




595000 FT



FIRM
FLOOD INSURANCE RATE MAP
CUMBERLAND COUNTY,
TENNESSEE
AND INCORPORATED AREAS

ANEL 308 OF 575
 (SEE MAP INDEX FOR FIRM PANEL LAYOUT)

CONTAINS:

COMMUNITY	NUMBER	PANEL	SUFFIX
CUMBERLAND COUNTY	470037	0308	D
ROSSVILLE, CITY OF	470039	0308	D

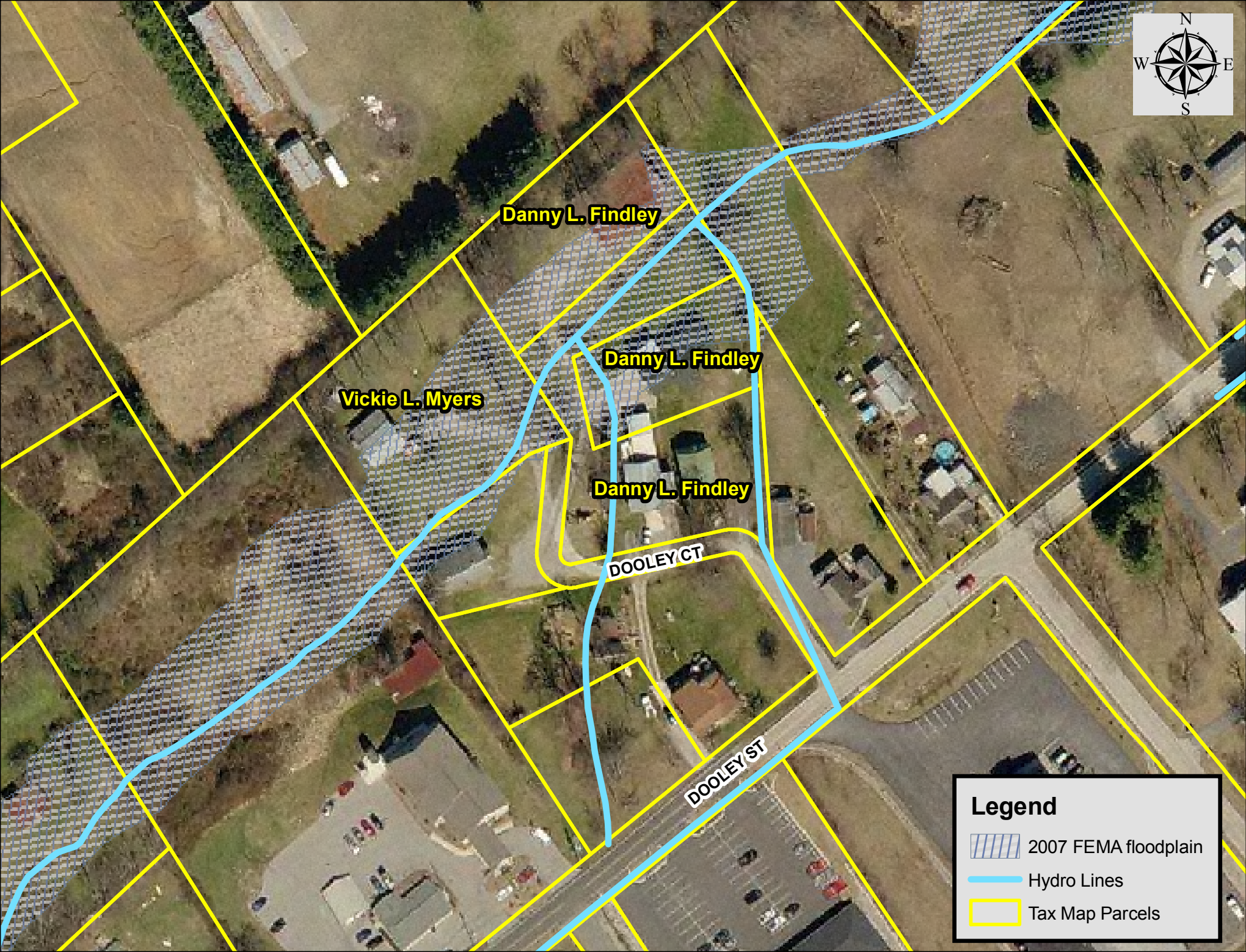
Notice to User: The Map Number shown below should be used when placing map orders; the Community Number shown above should be used on insurance applications for the subject community.



MAP NUMBER
47035C0308D
EFFECTIVE DATE
NOVEMBER 16, 2007

Federal Emergency Management Agency

This is an official copy of a portion of the above referenced flood map. It was extracted using F-MIT On-Line. This map does not reflect changes or amendments which may have been made subsequent to the date on the title block. For the latest product information about National Flood Insurance Program flood maps check the FEMA Flood Map Store at www.msc.fema.gov



Danny L. Findley

Vickie L. Myers




Danny L. Findley

Danny L. Findley

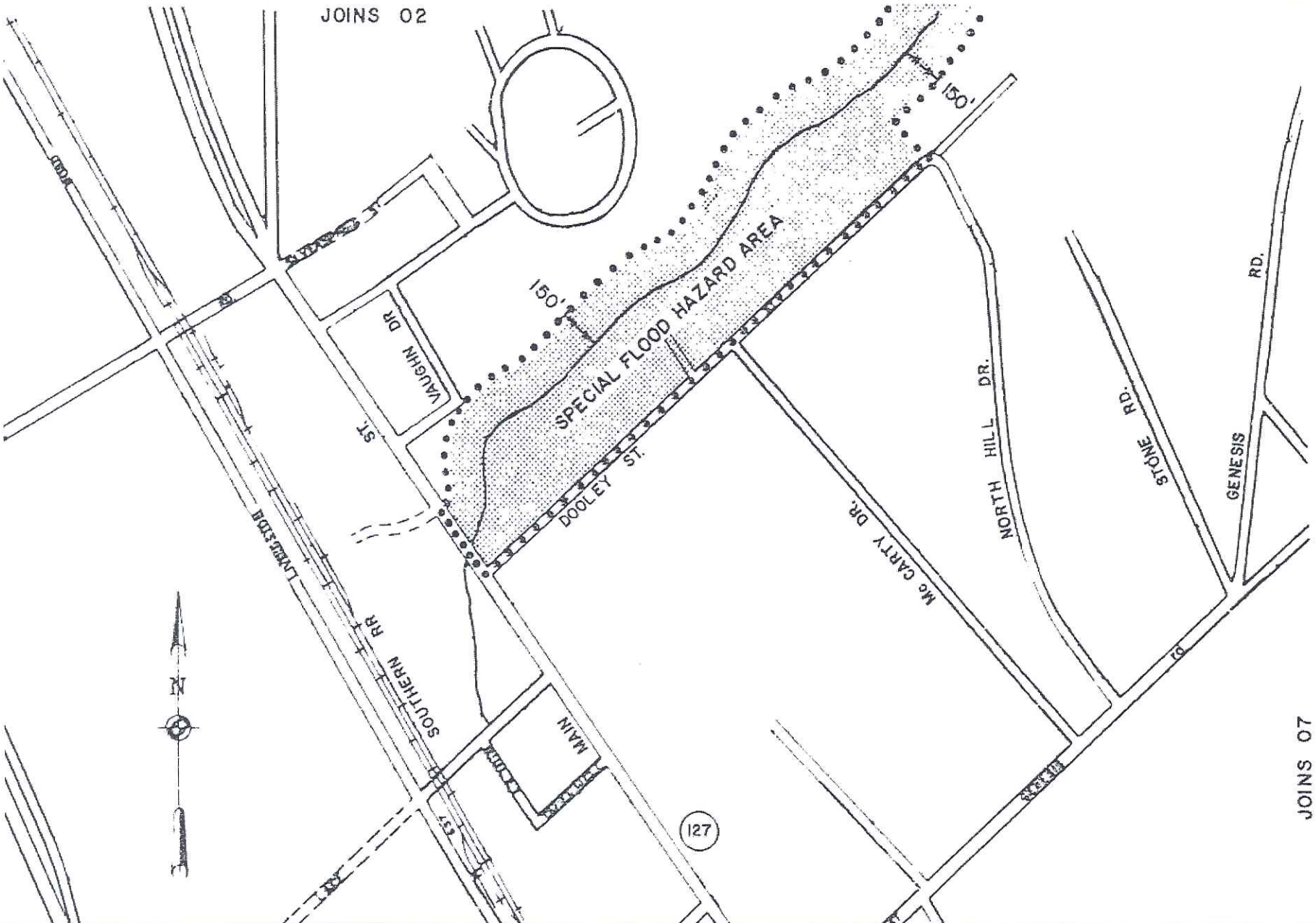
DOOLEY CT

DOOLEY ST

Legend

-  2007 FEMA floodplain
-  Hydro Lines
-  Tax Map Parcels

JOINS 02



127

JOINS 07

MENT

APPROXIMATE SCALE



FIA FLOOD HAZARD BOUNDARY MAP

No. H 06

Effective Date:

JUNE 14, 1974