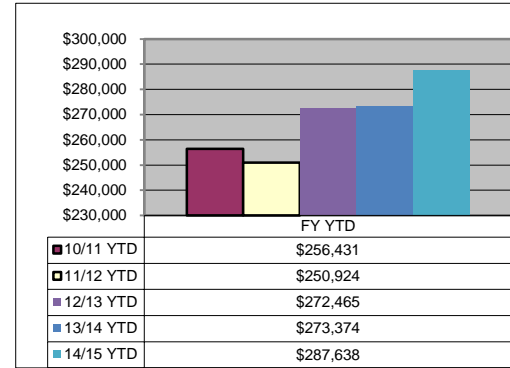
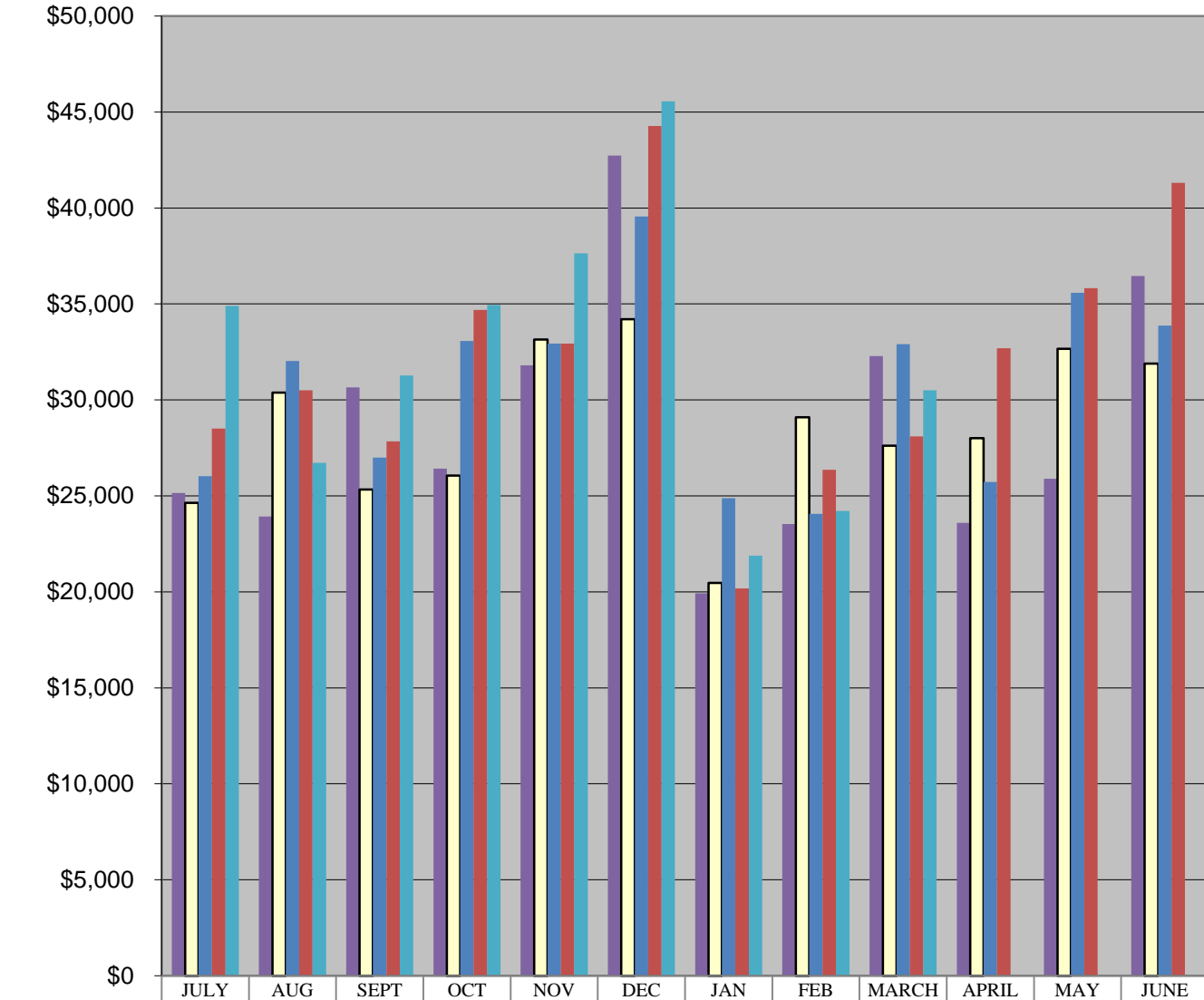


LIQUOR INCOME



10/11 INCOME	\$25,150	\$23,933	\$30,650	\$26,416	\$31,807	\$42,735	\$19,918	\$23,537	\$32,286	\$23,591	\$25,896	\$36,463
11/12 INCOME	\$24,641	\$30,378	\$25,331	\$26,057	\$33,148	\$34,200	\$20,459	\$29,093	\$27,619	\$28,011	\$32,666	\$31,895
12/13 INCOME	\$26,022	\$23,025	\$26,005	\$23,078	\$23,020	\$20,562	\$21,878	\$21,056	\$23,006	\$25,778	\$25,586	\$23,876