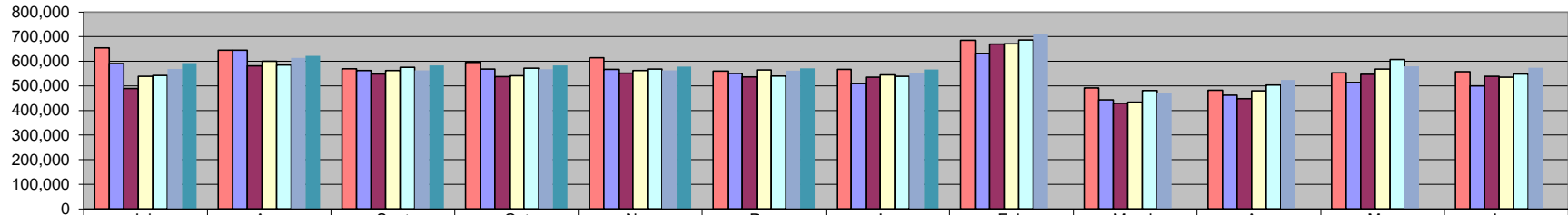
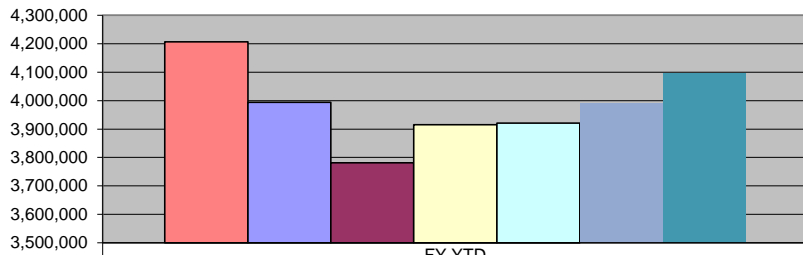


Sales Tax



	July	Aug	Sept	Oct	Nov	Dec	Jan	Feb	March	Apr	May	June
FY 07/08	654,645	644,912	570,078	595,223	614,857	559,519	567,762	685,134	491,196	482,367	553,238	557,801
FY 08/09	591,118	644,757	562,221	568,181	567,469	551,163	509,440	632,057	443,797	461,586	513,995	500,202
FY 09/10	488,728	581,783	548,598	538,171	552,339	536,537	535,383	669,430	429,062	447,590	547,557	539,256
FY 10/11	538,673	600,275	562,593	541,360	562,799	565,057	544,297	671,239	433,357	480,426	567,763	534,779
FY 11/12	542,564	584,673	575,593	571,365	568,438	539,521	538,581	686,878	481,137	503,099	607,376	548,870
FY 12/13	568,911	613,425	563,223	567,870	563,266	562,049	550,910	710,120	472,502	523,568	579,342	574,079
FY 13/14	592,201	622,250	583,383	583,302	578,810	571,889	566,907					

Sales Tax Revenue



	FY YTD
FY 07/08	4,206,996
FY 08/09	3,994,349
FY 09/10	3,781,539
FY 10/11	3,915,054
FY 11/12	3,920,735
FY 12/13	3,989,654
FY 13/14	4,098,743

*COLLECTIONS IN THE CITY OF CROSSVILLE

State of TN Cost of Administration 1.125% \$1,154,210.82
 Net Collections (sent to trustee's office) \$12,984.87
 \$1,141,225.95

Trustee of Cumberland County 1% \$11,412.26
 Net To Be Distributed \$1,129,813.69

CITY OF CROSSVILLE SPLIT

Check to City of Crossville \$564,906.84
 Check to Cumberland County Board of Education \$564,906.85

*Totals reported in January, but actually collected in November