

**WASCON**  
SALES and SERVICE

WASCON, Incorporated  
910 East Main Street  
Livingston, TN 38570  
(931)823-1388  
joshc@wasconinc.com  
www.wasconinc.com

**ADDRESS**

Veolia - Crossville  
Crossville, TN

**SHIP TO**

Veolia - Crossville  
Crossville, TN

ESTIMATE 5281

DATE 02/04/2019

EXPIRATION DATE 05/06/2019

ACTIVITY	QTY	RATE	AMOUNT
<b>REPAIR OF LITTLE OBED PUMP STATION</b> Past and Future Repair Costs of Little Obed Pump Station to Include the Following - Past and Future Labor - Consists of setting up bypass pump, set up hydraulic pump to pump wet well dry to install plug in influent line, inspection and repair of discharge piping and discharge base elbows, repair of intermediate guide brackets - Crane Rental - Bypass Pump Rental - Rebuild of one (1) Grundfos Submersible S Series Pump - Parts include o-ring kit, bearing kit, seal kit and shop labor - WASCON is rebuilding this pump due to a seal fail light being illuminated in the control panel - Three (3) suction plates (wear plates) - WASCON feels vibration from the base elbows breaking loose caused the suction plates to become damaged - Mileage	1	49,192.00	49,192.00

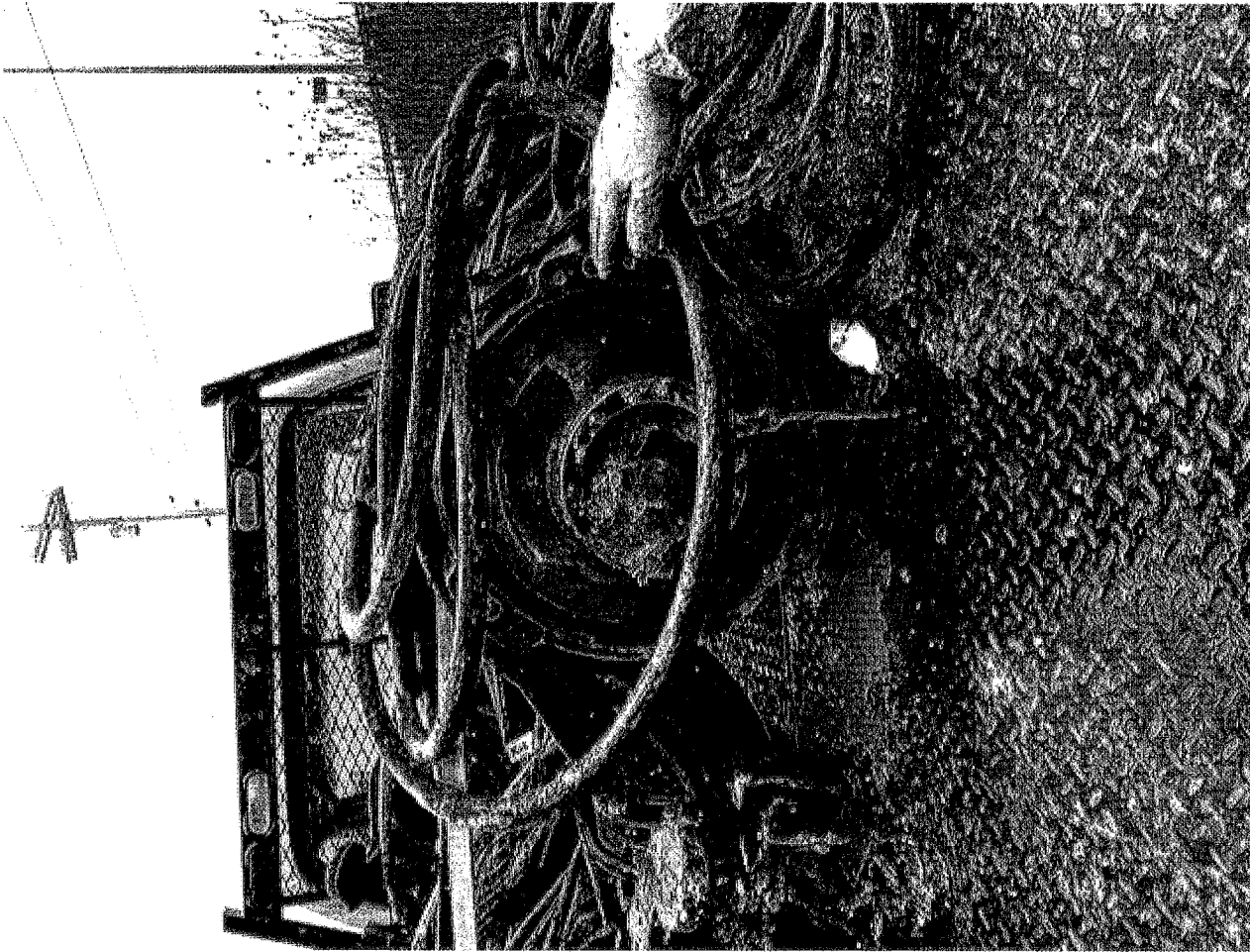
**\*\*PRICING IS FOR BUDGETARY PURPOSES ONLY\*\***

TOTAL \$49,192.00

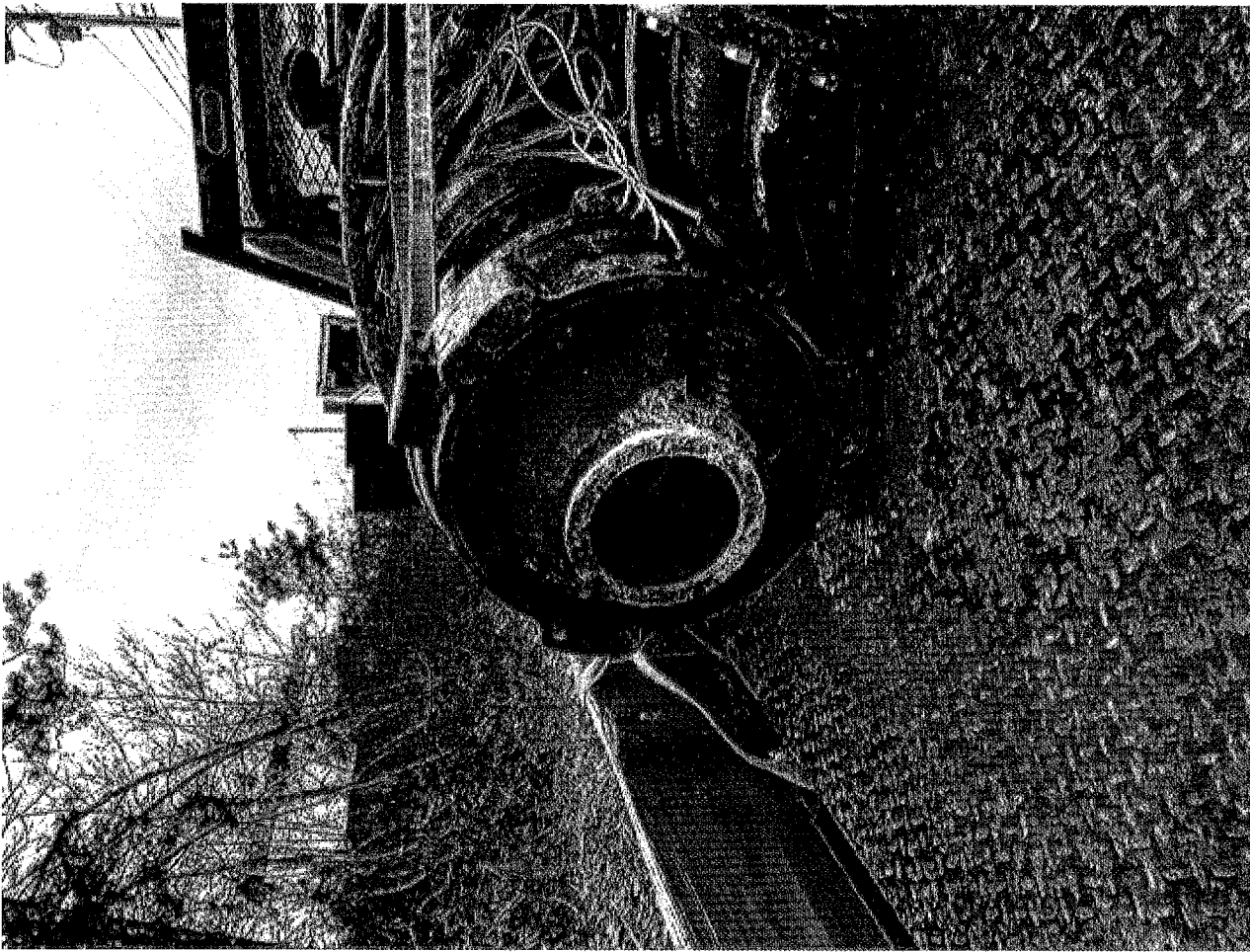
Accepted By

Accepted Date

413- 41920- 260



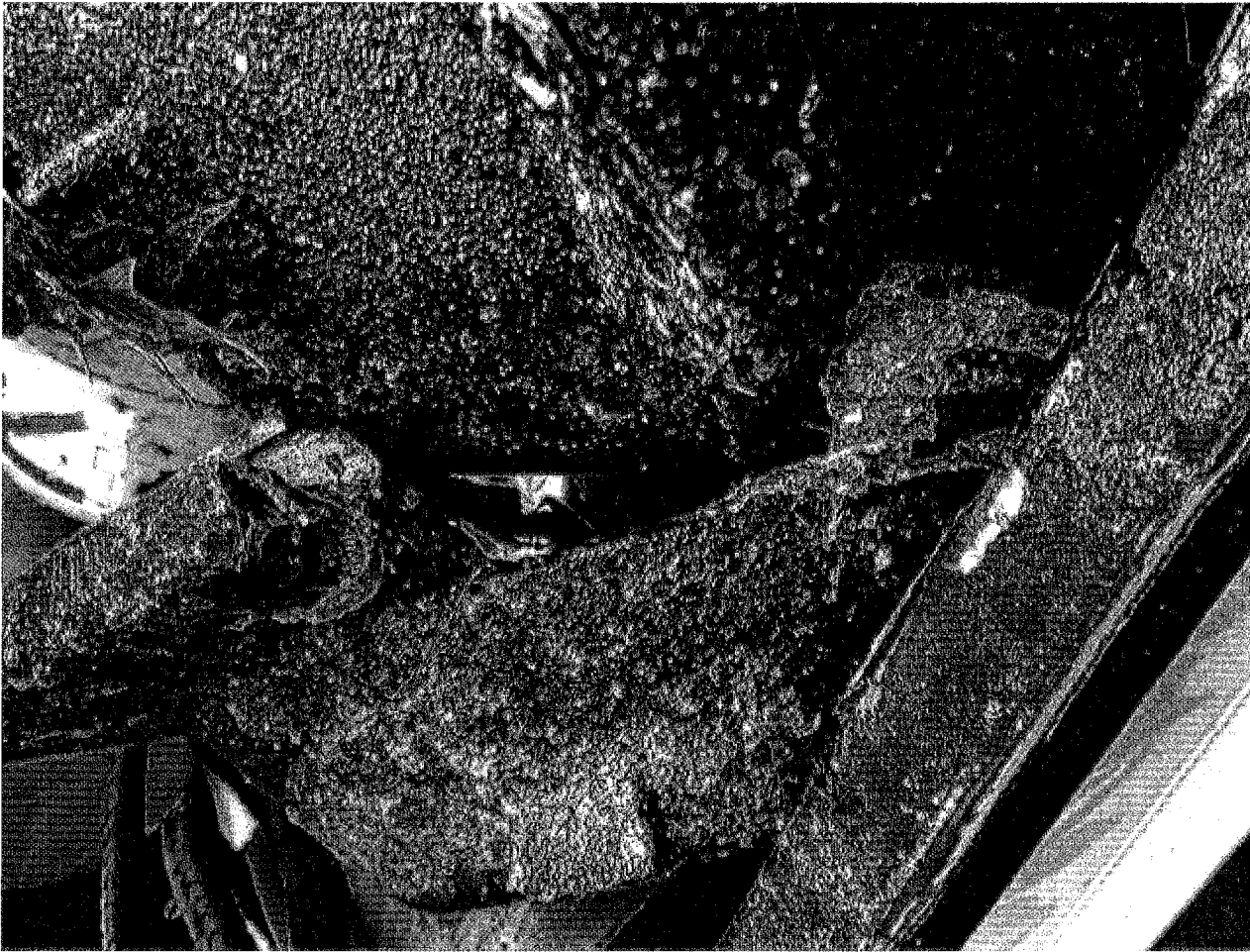
Pumps with broken suction plate "valute"



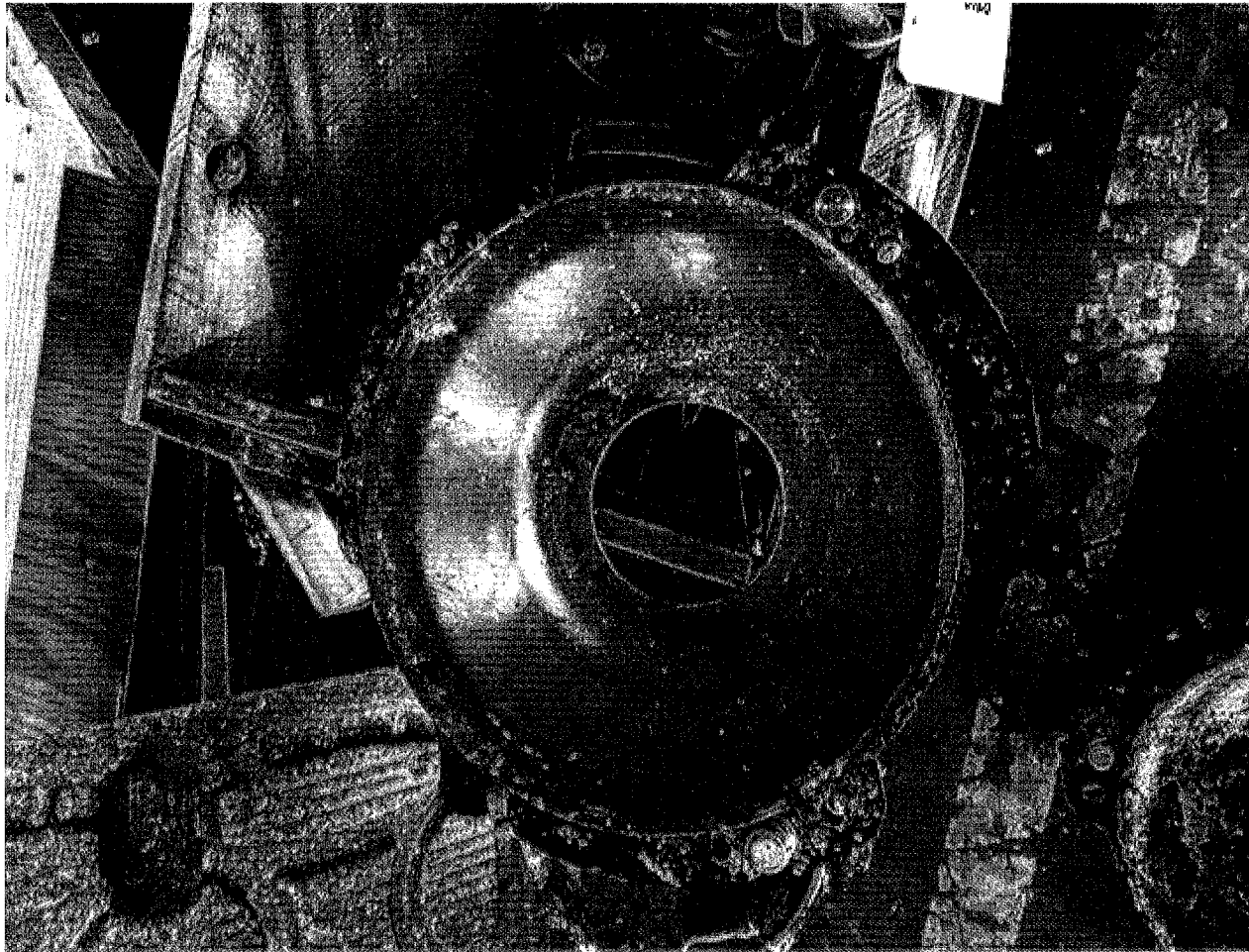
Pump with broken suction plate "volute"



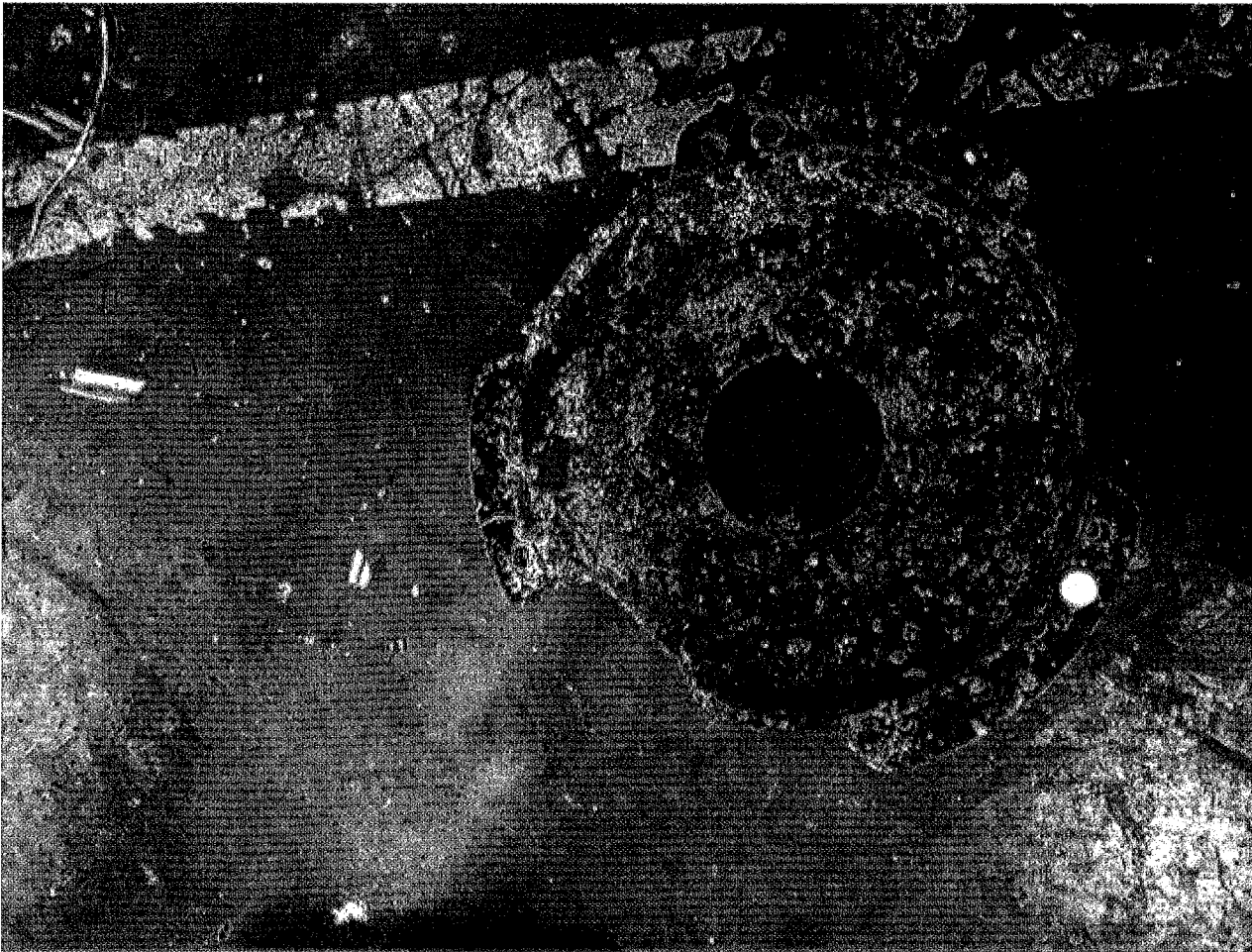
Pump with broken suction plate "volute"



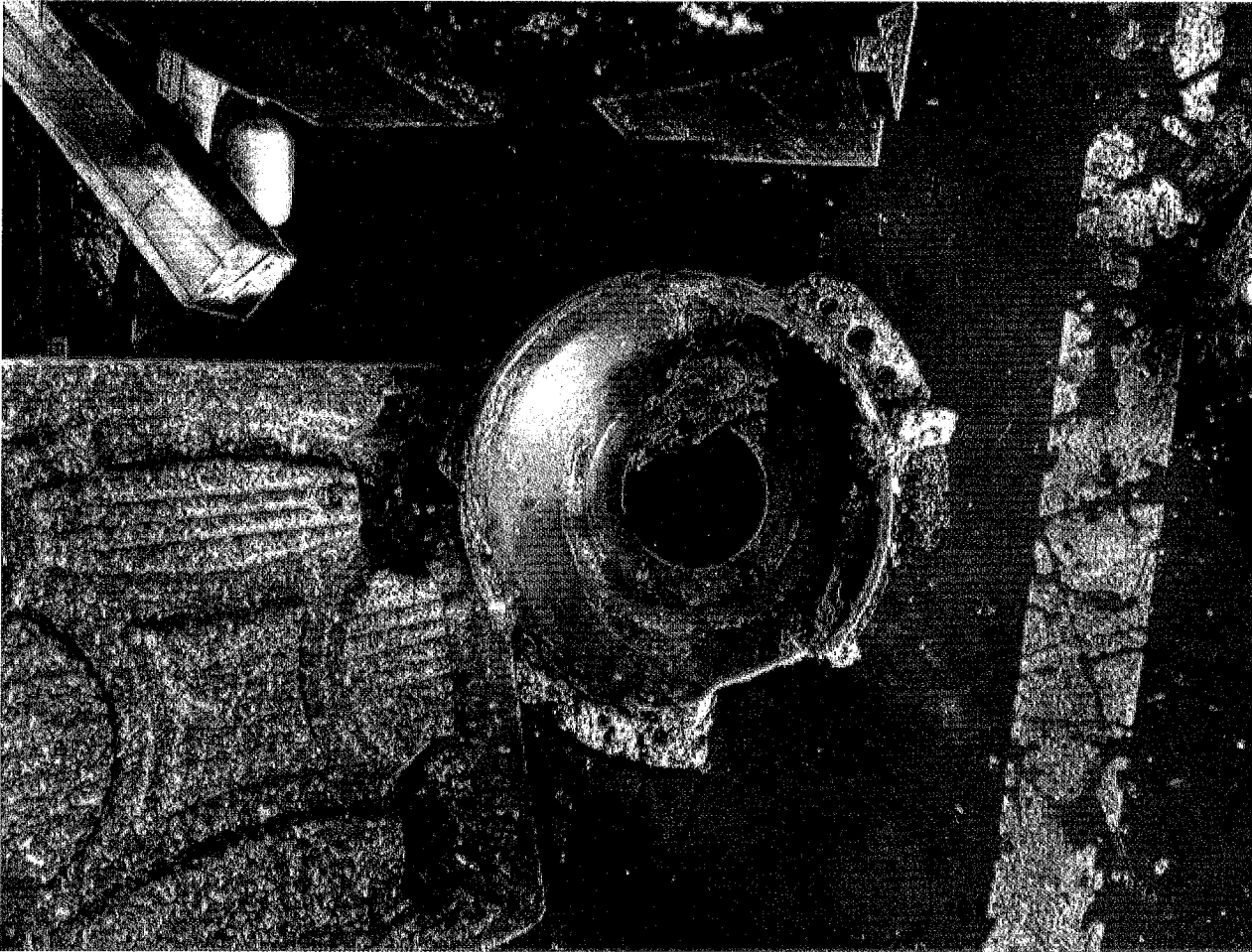
Broken suction plate "volute"



Broken suction plate "No late"



Broken suction plate "volute"



Broken suction plate "Volute"