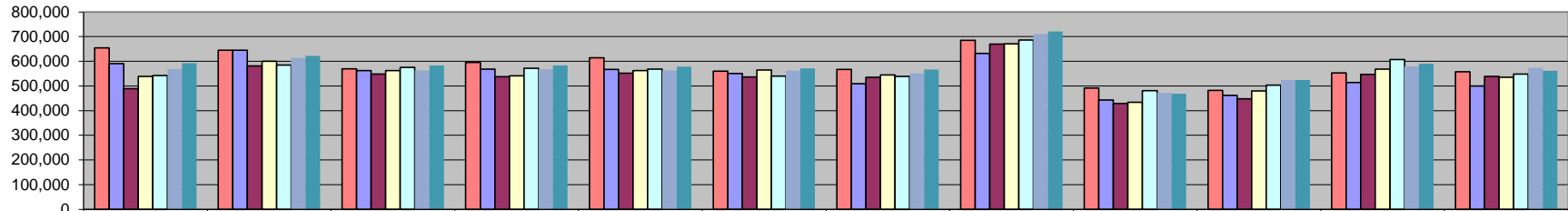
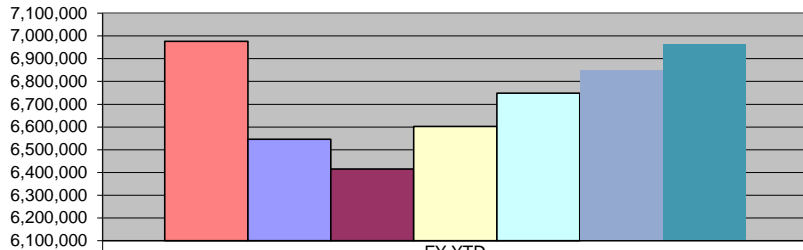


**Sales Tax**



	July	Aug	Sept	Oct	Nov	Dec	Jan	Feb	March	Apr	May	June
FY 07/08	654,645	644,912	570,078	595,223	614,857	559,519	567,762	685,134	491,196	482,367	553,238	557,801
FY 08/09	591,118	644,757	562,221	568,181	567,469	551,163	509,440	632,057	443,797	461,586	513,995	500,202
FY 09/10	488,728	581,783	548,598	538,171	552,339	536,537	535,383	669,430	429,062	447,590	547,557	539,256
FY 10/11	538,673	600,275	562,593	541,360	562,799	565,057	544,297	671,239	433,357	480,426	567,763	534,779
FY 11/12	542,564	584,673	575,593	571,365	568,438	539,521	538,581	686,878	481,137	503,099	607,376	548,870
FY 12/13	568,911	613,425	563,223	567,870	563,266	562,049	550,910	710,120	472,502	523,568	579,342	574,079
FY 13/14	592,201	622,250	583,383	583,302	578,810	571,889	566,907	720,995	468,129	524,484	590,302	562,391

**Sales Tax Revenue**



	FY YTD
FY 07/08	6,976,732
FY 08/09	6,545,987
FY 09/10	6,414,433
FY 10/11	6,602,617
FY 11/12	6,748,096
FY 12/13	6,849,266
FY 13/14	6,965,044

**\*COLLECTIONS IN THE CITY OF CROSSVILLE**

State of TN Cost of Administration	1.125%	\$1,149,070.98
Net Collections (sent to trustee's office)		\$12,927.05
		\$1,136,143.93

Trustee of Cumberland County	1%	\$113,461.44
Net To Be Distributed		\$1,124,782.49

**CITY OF CROSSVILLE SPLIT**

Check to City of Crossville	\$562,391.25
Check to Cumberland County Board of Education	\$562,391.25

\*Totals reported in June, but actually collected in April