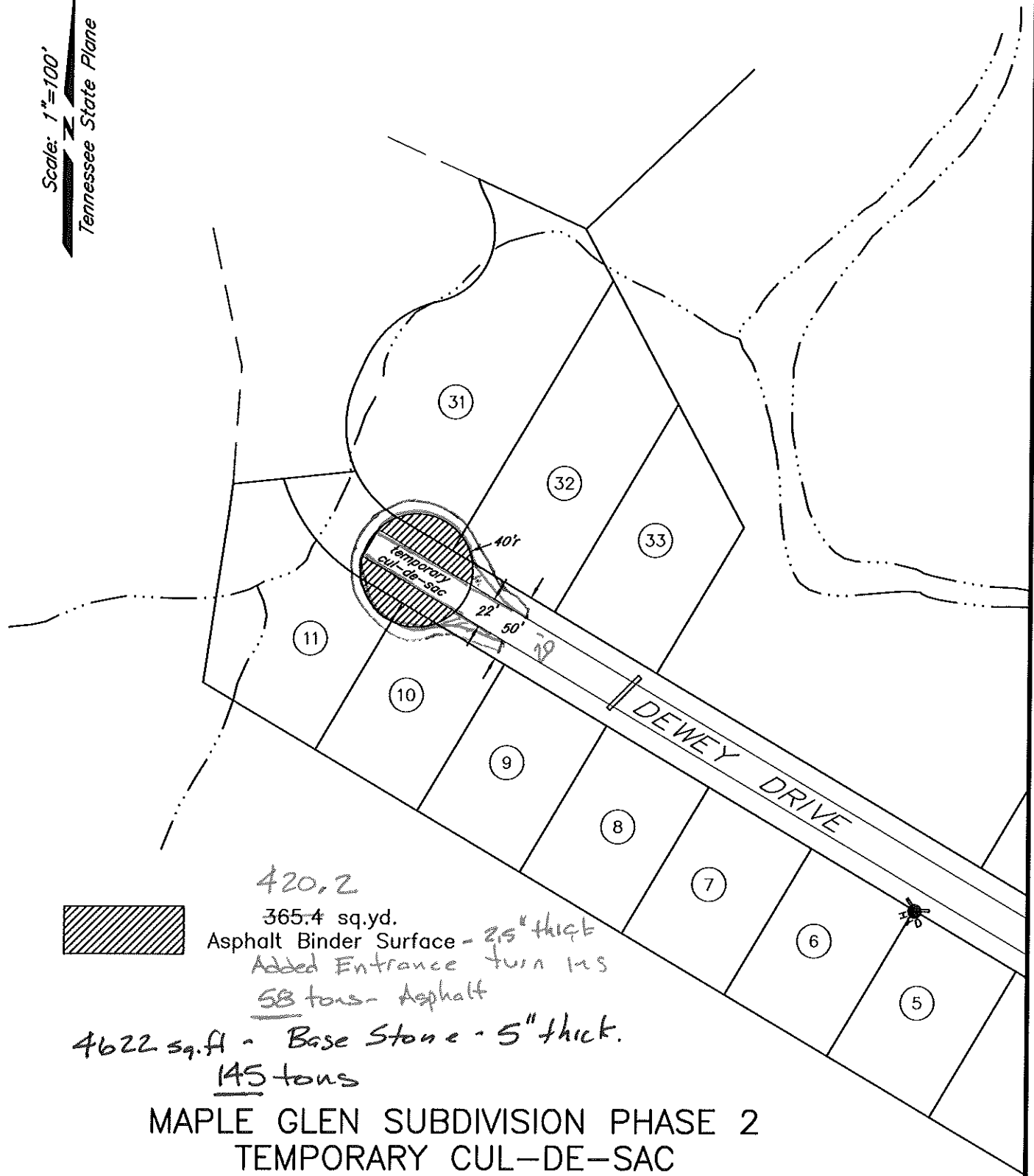


Scale: 1"=100'
Tennessee State Plane



420,2
365.4 sq.yd.
Asphalt Binder Surface - 2.5" thick
Added Entrance turn ins
58 tons - Asphalt
4622 sq.ft - Base Stone - 5" thick.
145 tons

MAPLE GLEN SUBDIVISION PHASE 2
TEMPORARY CUL-DE-SAC
PAVING DETAIL

TARE, INC.
Terre-Aqua Resource Engineering, Inc.
Crossville, Tennessee

OCTOBER, 2020