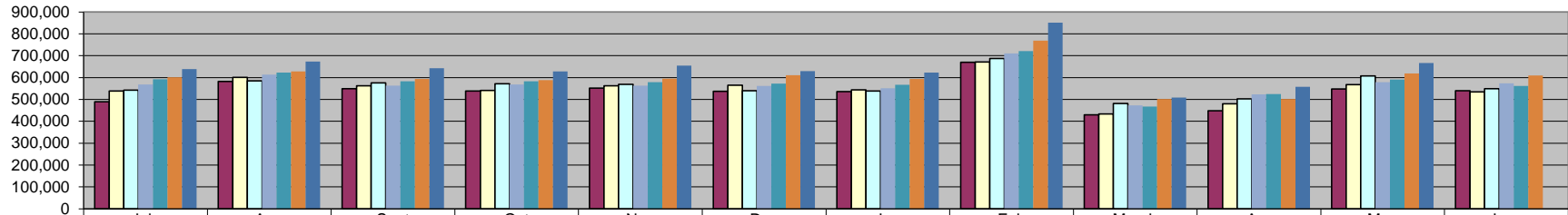
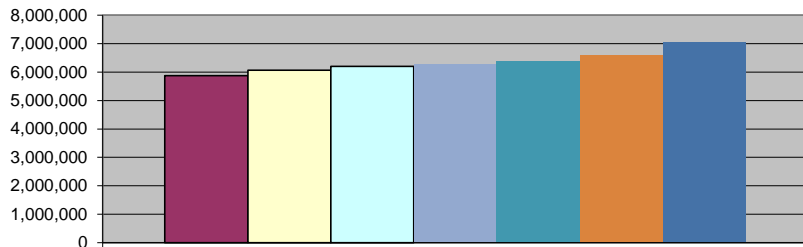


**Sales Tax**



	July	Aug	Sept	Oct	Nov	Dec	Jan	Feb	March	Apr	May	June
■ FY 09/10	488,728	581,783	548,598	538,171	552,339	536,537	535,383	669,430	429,062	447,590	547,557	539,256
□ FY 10/11	538,673	600,275	562,593	541,360	562,799	565,057	544,297	671,239	433,357	480,426	567,763	534,779
□ FY 11/12	542,564	584,673	575,593	571,365	568,438	539,521	538,581	686,878	481,137	503,099	607,376	548,870
■ FY 12/13	568,911	613,425	563,223	567,870	563,266	562,049	550,910	710,120	472,502	523,568	579,342	574,079
■ FY 13/14	592,201	622,250	583,383	583,302	578,810	571,889	566,907	720,995	468,129	524,484	590,302	562,391
■ FY 14/15	601,996	627,721	593,548	587,893	595,353	610,479	594,131	768,882	502,422	502,612	618,980	609,073
■ FY 15/16	639,340	673,495	642,074	627,579	655,121	629,502	622,916	851,452	508,499	558,191	666,159	

**Sales Tax Revenue**



	FY YTD
■ FY 09/10	5,875,177
□ FY 10/11	6,067,838
□ FY 11/12	6,199,226
■ FY 12/13	6,275,187
■ FY 13/14	6,402,653
■ FY 14/15	6,604,018
■ FY 15/16	7,074,327

\*COLLECTIONS IN THE CITY OF CROSSVILLE

State of TN Cost of Administration 1.125% \$1,361,087.48  
 Net Collections (sent to trustee's office) \$1,345,775.25

Trustee of Cumberland County 1% \$13,457.75  
 Net To Be Distributed \$1,332,317.50

CITY OF CROSSVILLE SPLIT  
 Check to City of Crossville \$666,158.75  
 Check to Cumberland County Board of Education \$666,158.75

\*Totals reported in May, but actually collected in March