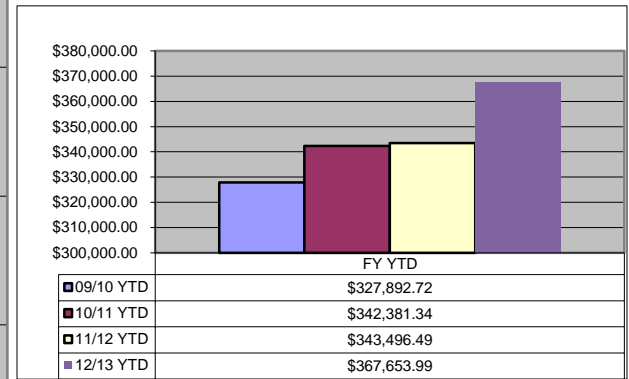
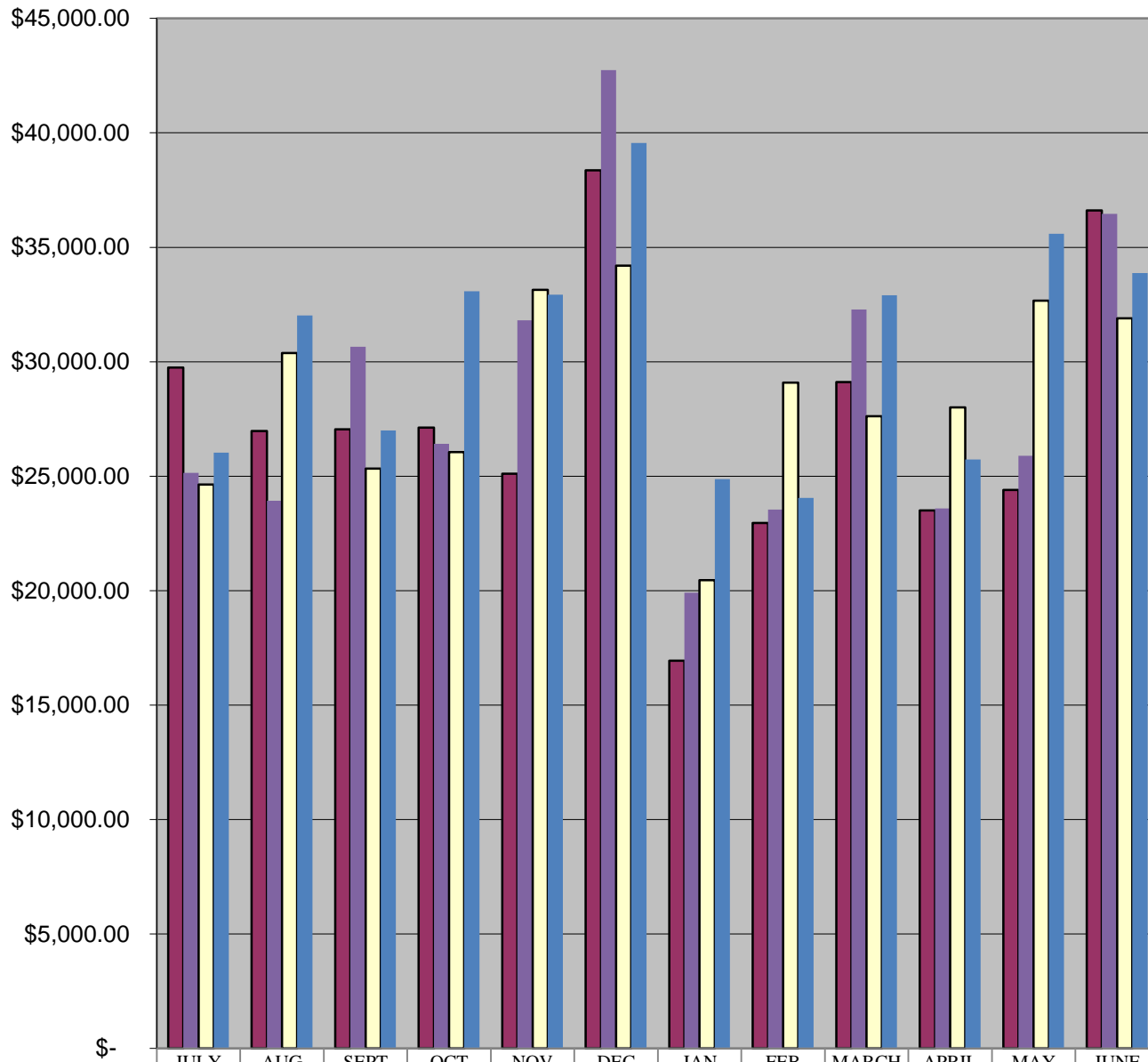


LIQUOR INCOME



09/10 INCOME	\$29,744	\$26,975	\$27,052	\$27,117	\$25,106	\$38,362	\$16,938	\$22,958	\$29,114	\$23,510	\$24,404	\$36,607
10/11 INCOME	\$25,149	\$23,932	\$30,649	\$26,415	\$31,807	\$42,734	\$19,918	\$23,537	\$32,286	\$23,590	\$25,896	\$36,463
11/12 INCOME	\$24,641	\$30,378	\$25,330	\$26,057	\$33,147	\$34,199	\$20,458	\$29,092	\$27,618	\$28,011	\$32,666	\$31,894
12/13 INCOME	\$26,032	\$32,025	\$26,995	\$33,078	\$32,929	\$39,563	\$24,878	\$24,055	\$32,906	\$25,727	\$35,585	\$33,875