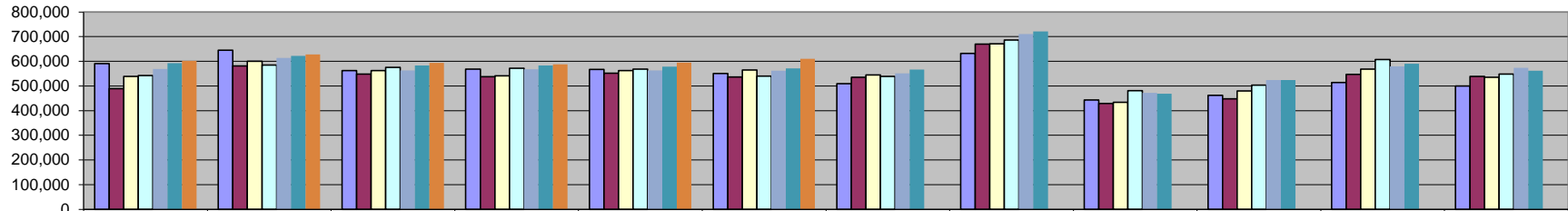
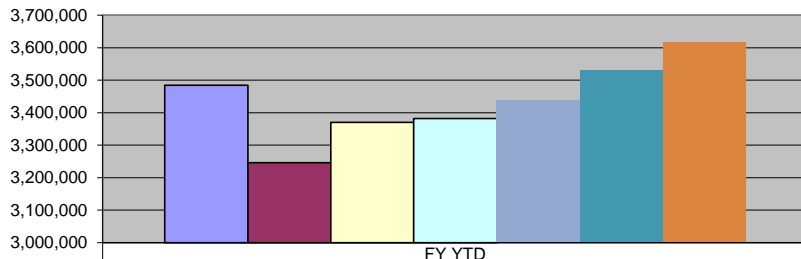


Sales Tax



| | July | Aug | Sept | Oct | Nov | Dec | Jan | Feb | March | Apr | May | June |
|------------|---------|---------|---------|---------|---------|---------|---------|---------|---------|---------|---------|---------|
| ■ FY 08/09 | 591,118 | 644,757 | 562,221 | 568,181 | 567,469 | 551,163 | 509,440 | 632,057 | 443,797 | 461,586 | 513,995 | 500,202 |
| ■ FY 09/10 | 488,728 | 581,783 | 548,598 | 538,171 | 552,339 | 536,537 | 535,383 | 669,430 | 429,062 | 447,590 | 547,557 | 539,256 |
| □ FY 10/11 | 538,673 | 600,275 | 562,593 | 541,360 | 562,799 | 565,057 | 544,297 | 671,239 | 433,357 | 480,426 | 567,763 | 534,779 |
| □ FY 11/12 | 542,564 | 584,673 | 575,593 | 571,365 | 568,438 | 539,521 | 538,581 | 686,878 | 481,137 | 503,099 | 607,376 | 548,870 |
| ■ FY 12/13 | 568,911 | 613,425 | 563,223 | 567,870 | 563,266 | 562,049 | 550,910 | 710,120 | 472,502 | 523,568 | 579,342 | 574,079 |
| ■ FY 13/14 | 592,201 | 622,250 | 583,383 | 583,302 | 578,810 | 571,889 | 566,907 | 720,995 | 468,129 | 524,484 | 590,302 | 562,391 |
| ■ FY 14/15 | 601,996 | 627,721 | 593,548 | 587,893 | 595,353 | 610,479 | | | | | | |

Sales Tax Revenue



| | FY YTD |
|------------|-----------|
| ■ FY 08/09 | 3,484,909 |
| ■ FY 09/10 | 3,246,156 |
| □ FY 10/11 | 3,370,756 |
| □ FY 11/12 | 3,382,154 |
| ■ FY 12/13 | 3,438,744 |
| ■ FY 13/14 | 3,531,836 |
| ■ FY 14/15 | 3,616,990 |

*COLLECTIONS IN THE CITY OF CROSSVILLE

State of TN Cost of Administration 1.125% \$1,247,323.38
 Net Collections (sent to trustee's office) \$1,233,290.99

Trustee of Cumberland County 1% \$12,332.91
 Net To Be Distributed \$1,220,958.08

CITY OF CROSSVILLE SPLIT

Check to City of Crossville \$610,479.04
 Check to Cumberland County Board of Education \$610,479.04

*Totals reported in December, but actually collected in October.