

NOTICE OF INTENT TO APPLY: 2021 MULTIMODAL ACCESS GRANT DUE FRIDAY, JULY 30, 2021

Please read the 2021 MMAG Instructions & Guidance prior to completing this NOI

Applicant Information			
City/County			
Distressed & At-Risk Counties	Is the proposed project located in a distressed or at-risk county ?	Y / N	
Contact Information	Name:		
	Title:		
	E-mail:		
	Phone:		
Carbon Copy <small>Please identify anyone to be copied on NOI-related correspondence</small>	Name:		E-mail:
Project Scope			
Scope of Improvement <small>Mark all that apply</small>	<input type="radio"/> Construct new multimodal facilities <input type="radio"/> Reconstruct/upgrade existing multimodal facilities <input type="radio"/> Rehabilitate/maintain existing multimodal facilities		
Improvement Type <small>Mark all that apply</small>	<input type="radio"/> Sidewalks <input type="radio"/> Pedestrian crossing improvements, including high-visibility crosswalks, curb ramps, signs & pavement markings, signalization, and median refuge islands <input type="radio"/> Bicycle facilities (including on-road bike lanes/cycle tracks) <input type="radio"/> Multi-use paths (pedestrian plus bicycle traffic) <input type="radio"/> Transit stop amenities (shelters, benches, sidewalks, curb ramps, lighting) <input type="radio"/> Complete streets, road diet, or traffic calming measures <input type="radio"/> Bicycle, pedestrian, or transit-related improvements that address requirements of the Americans with Disabilities Act (ADA) <input type="radio"/> Pedestrian-scale lighting <input type="radio"/> Other: <input style="width: 100%;" type="text"/>		
Project Location			
State Route			
Termini			
Project Coordination	Does the project overlap with any current TDOT projects?	Y / N	
	What percentage of the proposed project improvements will be along the State Route?		
Project Map			
Applicants are required to submit an annotated aerial map(s) of the project location, including notation showing any potential phasing, with the Notice of Intent to Apply. Please either merge a map to this PDF document before submission, or submit this map as a secondary attachment in your submission to TDOT.MultimodalPlanning@tn.gov			

Project Description

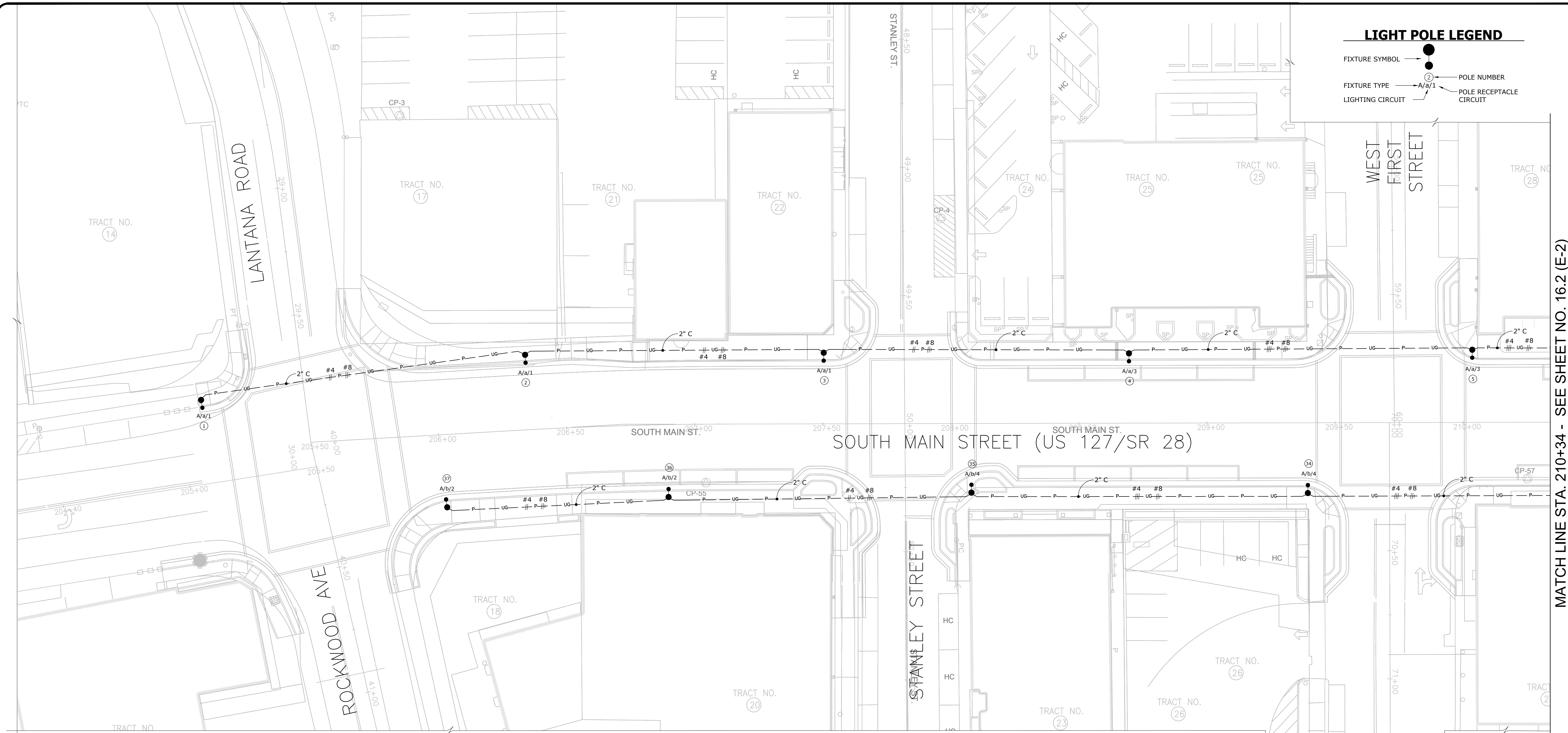
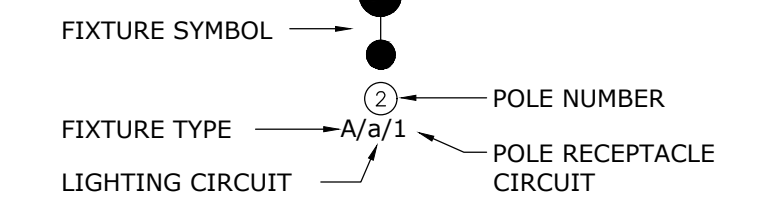
NOTICE OF INTENT TO APPLY: 2021 MULTIMODAL ACCESS GRANT DUE FRIDAY, JULY 30, 2021

Preliminary Data Collection	Purpose and Need		
	Project Purpose <i>Please describe the intent of the proposed project</i>		
	Connectivity Need <i>Please identify trip generators or multimodal infrastructure connected by the project</i>		
	Safety Need <i>Please list any known safety needs within the proposed project area</i>		
	Prior Planning <i>Please list any planning documents that describe a need for the project</i>		
	Scope Considerations		
	Phase Identification <i>If possible, please identify potential phasing within the proposed termini</i>		
	Engineering / ROW Considerations <i>Please mark all elements that may be included in the final project scope</i>	<ul style="list-style-type: none"> ○ Impact to existing bridge/structure ○ Modification of existing roadway/lane configuration ○ Construction of bicycle or pedestrian bridge ○ Impact to a rail line ○ Modification of adjacent slopes, drainage, or buildings ○ Right of Way Acquisition ○ Utility Relocation <ul style="list-style-type: none"> ○ Utilities to be moved, such as power poles or stormwater drainage, are in the public ROW ○ If so, does the community have an urban revitalization plan that describes a need to move the utility? 	
	Multimodal Access Grant History		
	Award History	<table border="1" style="width: 100%; border-collapse: collapse;"> <tr> <td style="width: 70%; padding: 5px;">Does the applicant have an open MMAG project?</td> <td style="width: 30%; padding: 5px; text-align: center;">Y / N</td> </tr> </table>	Does the applicant have an open MMAG project?
Does the applicant have an open MMAG project?	Y / N		
Project Status <i>If yes, what is the status of the previously awarded project?</i>			

2021 MultiModal Access Grant



LIGHT POLE LEGEND



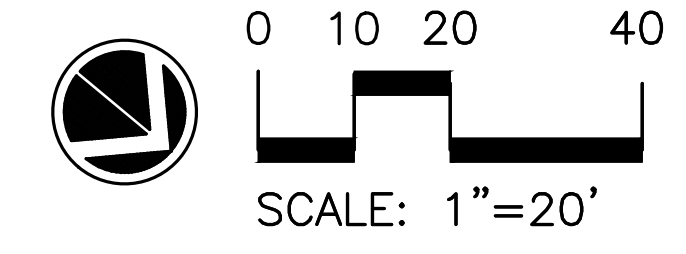
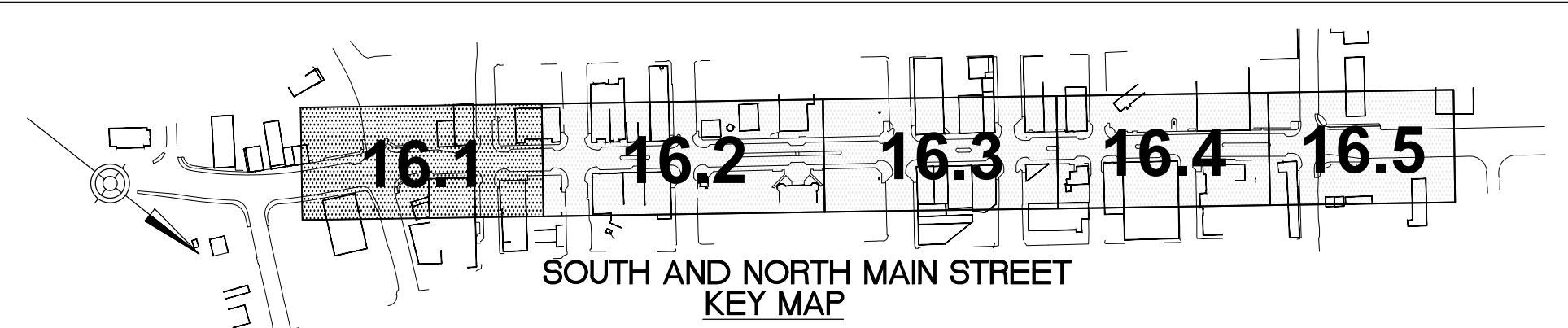
MATCH LINE STA. 210+34 - SEE SHEET NO. 16.2 (E-2)

GENERAL NOTES:

- THE STANDARD SPECIFICATIONS FOR THIS PROJECT ARE TENNESSEE DEPARTMENT OF TRANSPORTATION (TDOT) STANDARD SPECIFICATIONS FOR ROAD AND BRIDGE CONSTRUCTION.
- CONSTRUCTION OF STREET LIGHTING SYSTEM SHALL COMPLY WITH TDOT SPECIFICATIONS SECTION 714 AND AS AMENDED BY THESE DRAWINGS.
- CONSTRUCTION DETAILS NOT SHOWN ON THE DRAWINGS ARE TO CONFORM TO THE TDOT STANDARD DRAWINGS.
- NEW UNDERGROUND RACEWAYS ARE SHOWN DIAGRAMMATICALLY. ROUTE TO AVOID CONFLICTS WITH EXISTING AND PROPOSED UTILITY MANHOLES AND PULLBOXES.
- REFER TO CROSS SECTION DETAILS ON CURBING AND SIDEWALK PLANS FOR GENERAL LOCATION OF UNDERGROUND RACEWAYS.
- REFER TO LANDSCAPE PLANS TO VERIFY AREAS OF GENERAL CONTRACT WORK. ELECTRICAL CONTRACTOR SHALL BE RESPONSIBLE FOR CUTTING AND PATCHING AREAS OUTSIDE OF NEW PAVING AND SIDEWALK AREAS.
- REFER TO SHEET 16.9 (E-9) FOR SYMBOLS AND FIXTURES SCHEDULE.

CONTRACTOR RESPONSIBILITY MATRIX

CATEGORY	DESCRIPTION	EC	CITY	UTILITY
LIGHT POLE MATERIAL	FURNISH LIGHT POLE AND FIXTURE		X	
	INSTALL LIGHT POLE AND FIXTURE		X	
LIGHT POLE INSTALLATION	FURNISH AND INSTALL LIGHTING AND RECEPTACLE BRANCH CIRCUIT WIRING (INCLUDING ALL CONNECTIONS)		X	
	FURNISH AND INSTALL ALL CONCRETE FOUNDATION (PER THE DRAWINGS)	X		
LIGHT POLE FOUNDATION	FURNISH AND INSTALL GROUND ROD, CONDUIT, AND GROUNDING CONDUCTOR	X		
	FURNISH AND INSTALL LIGHTING AND RECEPTACLE BRANCH CIRCUIT WIRING (INCLUDING ALL CONNECTIONS AND FUSING)		X	
	FURNISH AND INSTALL PULLBOX AT EACH POLE BASE (PER THE DRAWINGS)	X		
LIGHTING CONTROL PANEL ASSEMBLY	FURNISH AND INSTALL ENTIRE ASSEMBLY (PER THE DRAWINGS)	X		
	CONDUIT FROM PANEL TO RISER POLE	X		
	SERVICE LATERAL CONDUCTORS			X
UNDERGROUND CONDUIT/WIRING	FURNISH AND INSTALL LIGHTING AND RECEPTACLE BRANCH CIRCUIT WIRING (FROM LIGHT POLE TO BREAKER)		X	
	TRENCH AND BACKFILL (INCLUDING WARNING RIBBON)	X		
	DIRECT BURY CONDUIT	X		
	FURNISH AND INSTALL ALL BRANCH CIRCUIT WIRING (PER PLANS)		X	



NO.	REVISION	DATE

**CITY OF CROSSVILLE, TN
SIDEWALK REPLACEMENT
PROJECT**

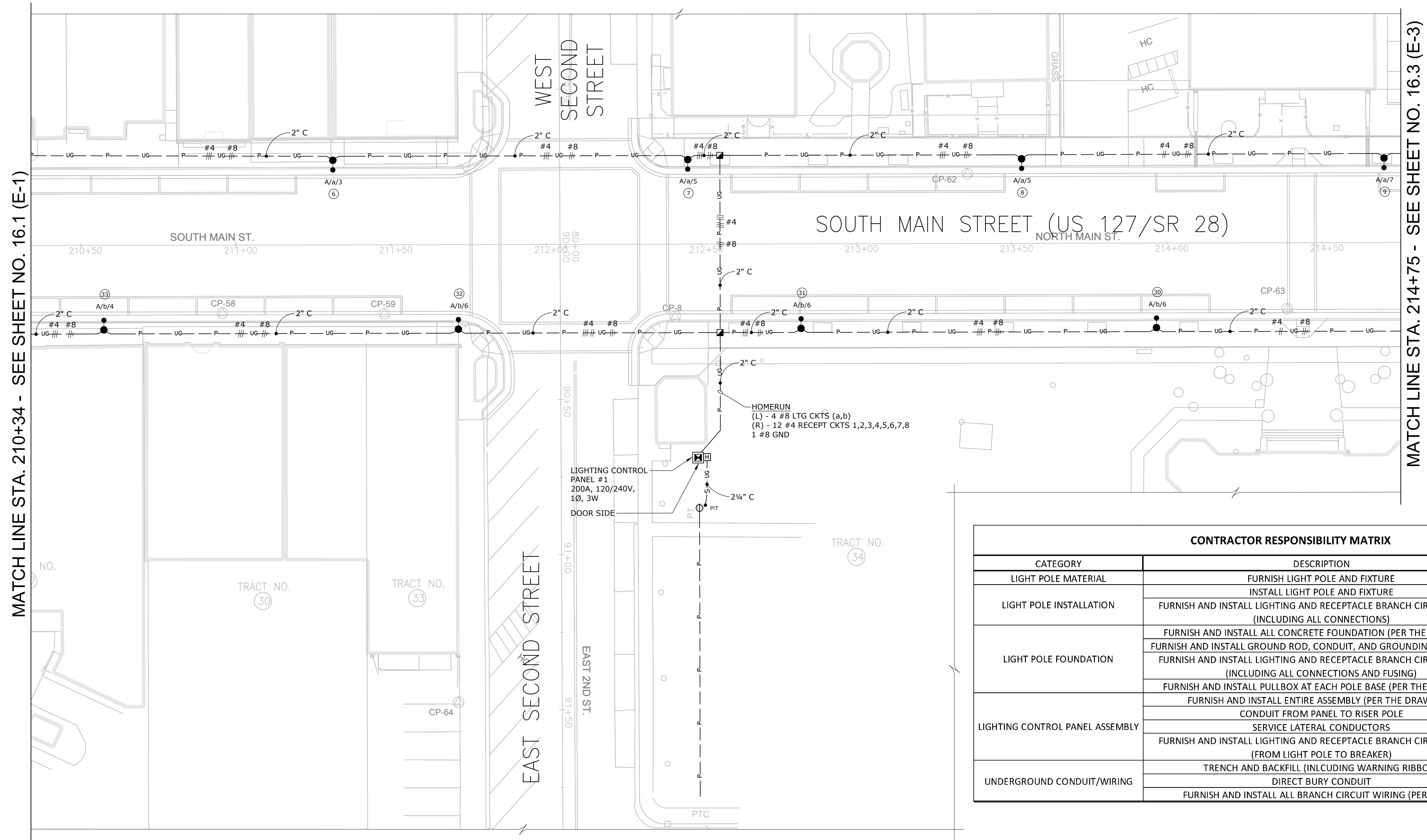
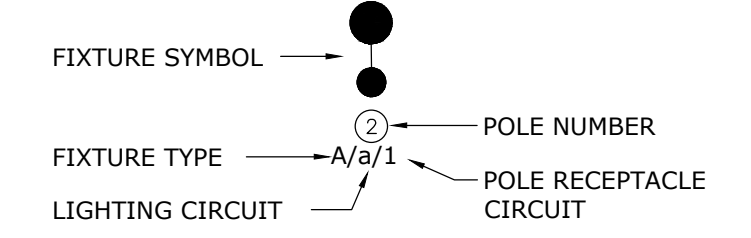
SCALE: AS SHOWN
DATE: 6/25/21
DESIGNED BY: DH
DRAWN BY: PTA
CHECKED BY: DH

**LIGHTING PLAN
MAIN STREET
(US 127 / SR 28)**

PROJECT NO.	
181048	
DRAWING NAME	
16.1	
SHEET	OF
16.1	83

162-15-05 - Don Muckley - 2021-06-22 03:36 PM

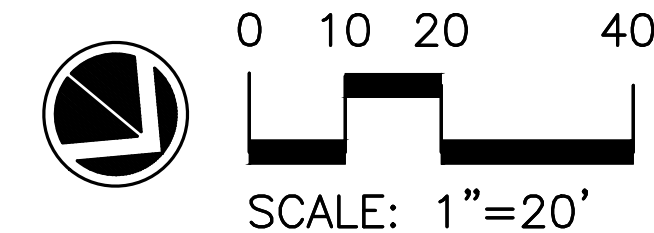
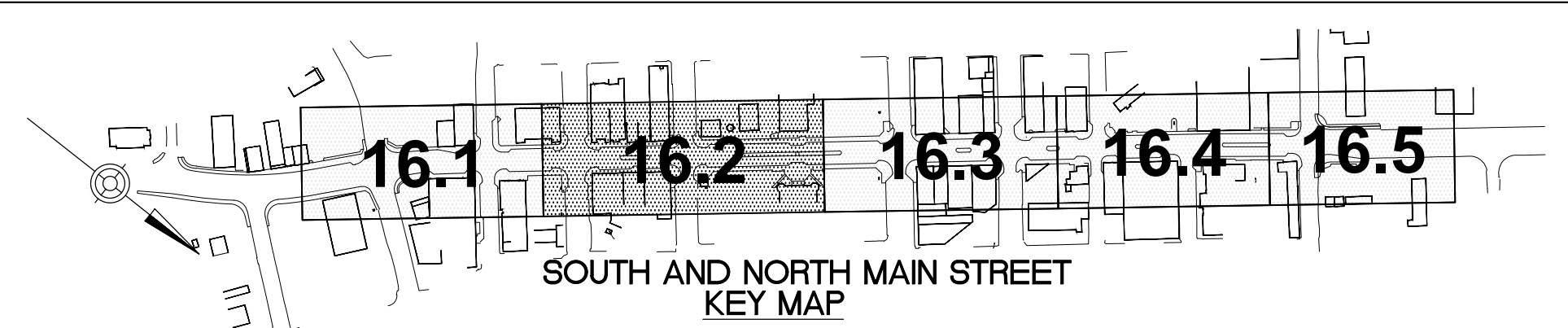
LIGHT POLE LEGEND



CONTRACTOR RESPONSIBILITY MATRIX				
CATEGORY	DESCRIPTION	EC	CITY	UTILITY
LIGHT POLE MATERIAL	FURNISH LIGHT POLE AND FIXTURE		X	
LIGHT POLE INSTALLATION	INSTALL LIGHT POLE AND FIXTURE		X	
	FURNISH AND INSTALL LIGHTING AND RECEPTACLE BRANCH CIRCUIT WIRING (INCLUDING ALL CONNECTIONS)		X	
LIGHT POLE FOUNDATION	FURNISH AND INSTALL ALL CONCRETE FOUNDATION (PER THE DRAWINGS)	X		
	FURNISH AND INSTALL GROUND ROD, CONDUIT, AND GROUNDING CONDUCTOR	X		
	FURNISH AND INSTALL LIGHTING AND RECEPTACLE BRANCH CIRCUIT WIRING (INCLUDING ALL CONNECTIONS AND FUSING)		X	
	FURNISH AND INSTALL PULLBOX AT EACH POLE BASE (PER THE DRAWINGS)	X		
LIGHTING CONTROL PANEL ASSEMBLY	FURNISH AND INSTALL ENTIRE ASSEMBLY (PER THE DRAWINGS)	X		
	CONDUIT FROM PANEL TO RISER POLE	X		
	SERVICE LATERAL CONDUCTORS			X
	FURNISH AND INSTALL LIGHTING AND RECEPTACLE BRANCH CIRCUIT WIRING (FROM LIGHT POLE TO BREAKER)		X	
UNDERGROUND CONDUIT/WIRING	TRENCH AND BACKFILL (INCLUDING WARNING RIBBON)	X		
	DIRECT BURY CONDUIT	X		
	FURNISH AND INSTALL ALL BRANCH CIRCUIT WIRING (PER PLANS)		X	

GENERAL NOTES:

- THE STANDARD SPECIFICATIONS FOR THIS PROJECT ARE TENNESSEE DEPARTMENT OF TRANSPORTATION (TDOT) STANDARD SPECIFICATIONS FOR ROAD AND BRIDGE CONSTRUCTION.
- CONSTRUCTION OF STREET LIGHTING SYSTEM SHALL COMPLY WITH TDOT SPECIFICATIONS SECTION 714 AND AS AMENDED BY THESE DRAWINGS.
- CONSTRUCTION DETAILS NOT SHOWN ON THE DRAWINGS ARE TO CONFORM TO THE TDOT STANDARD DRAWINGS.
- NEW UNDERGROUND RACEWAYS ARE SHOWN DIAGRAMMATICALLY. ROUTE TO AVOID CONFLICTS WITH EXISTING AND PROPOSED UTILITY MANHOLES AND PULLBOXES.
- REFER TO CROSS SECTION DETAILS ON CURBING AND SIDEWALK PLANS FOR GENERAL LOCATION OF UNDERGROUND RACEWAYS.
- REFER TO LANDSCAPE PLANS TO VERIFY AREAS OF GENERAL CONTRACT WORK. ELECTRICAL CONTRACTOR SHALL BE RESPONSIBLE FOR CUTTING AND PATCHING AREAS OUTSIDE OF NEW PAVING AND SIDEWALK AREAS.
- REFER TO SHEET 16.9 (E-9) FOR SYMBOLS AND FIXTURES SCHEDULE.



NO.	REVISION	DATE

**CITY OF CROSSVILLE, TN
SIDEWALK REPLACEMENT
PROJECT**

SCALE:	AS SHOWN
DATE:	6/25/21
DESIGNED BY:	DH
DRAWN BY:	PTA
CHECKED BY:	DH

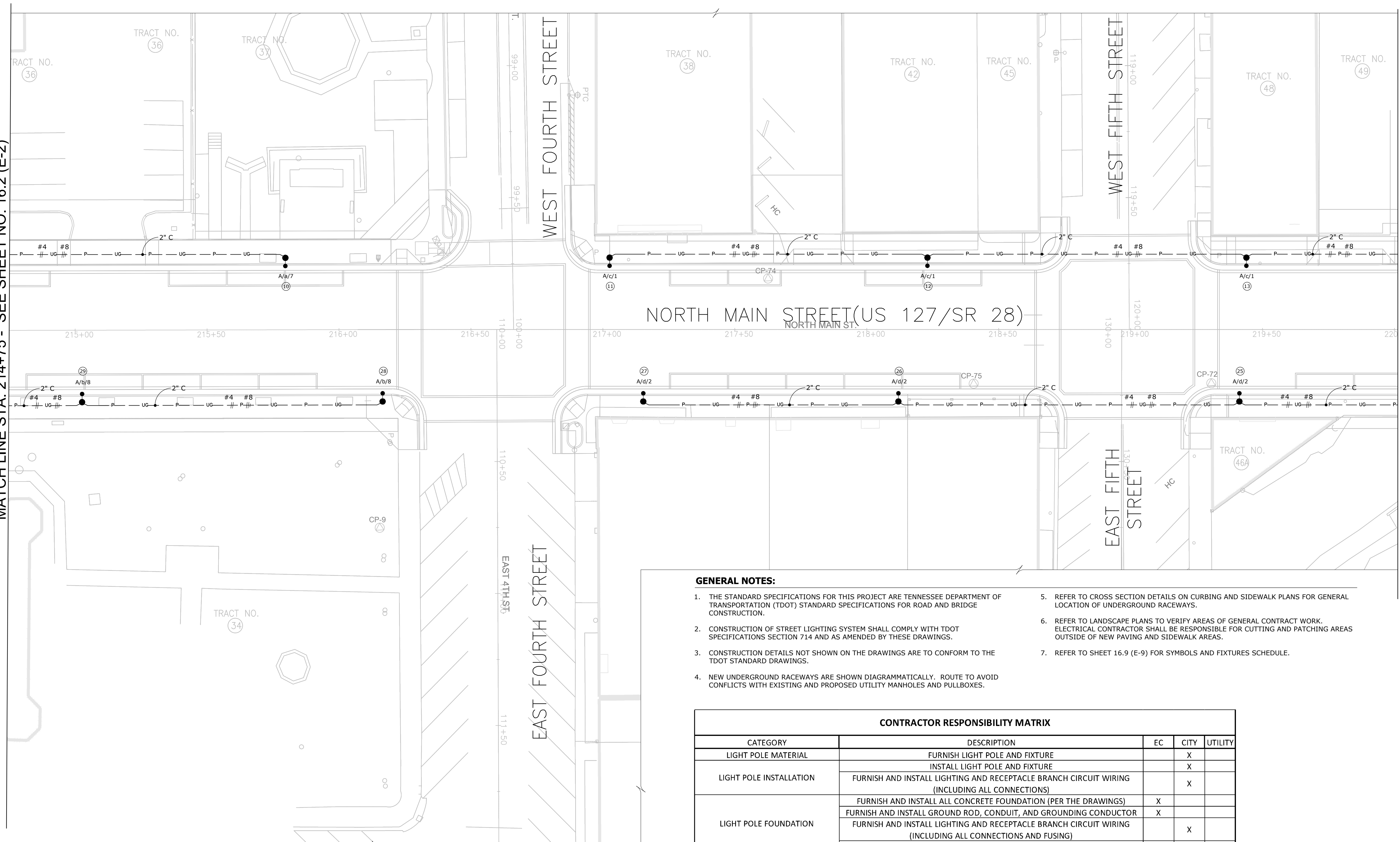
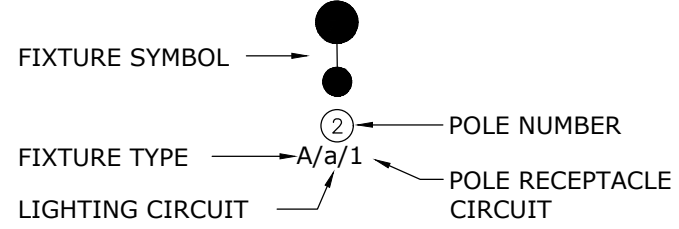
**LIGHTING PLAN
MAIN STREET
(US 127 / SR 28)**

PROJECT NO. 181048	
DRAWING NAME 16.2	
SHEET 16.2	OF 83

MATCH LINE STA. 214+75 - SEE SHEET NO. 16.2 (E-2)

MATCH LINE STA. 220+00 - SEE SHEET NO. 16.4 (E-4)

LIGHT POLE LEGEND

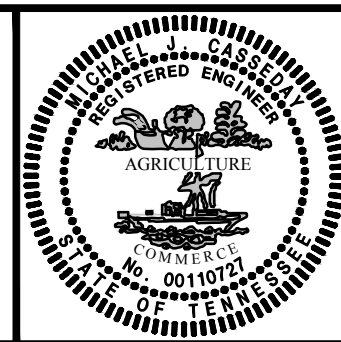
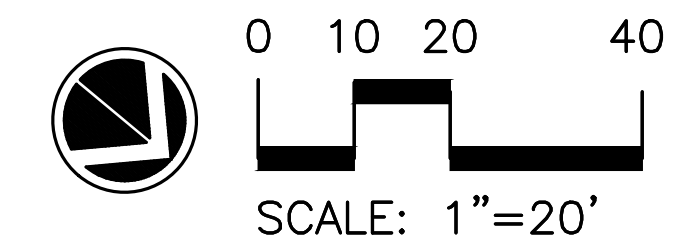
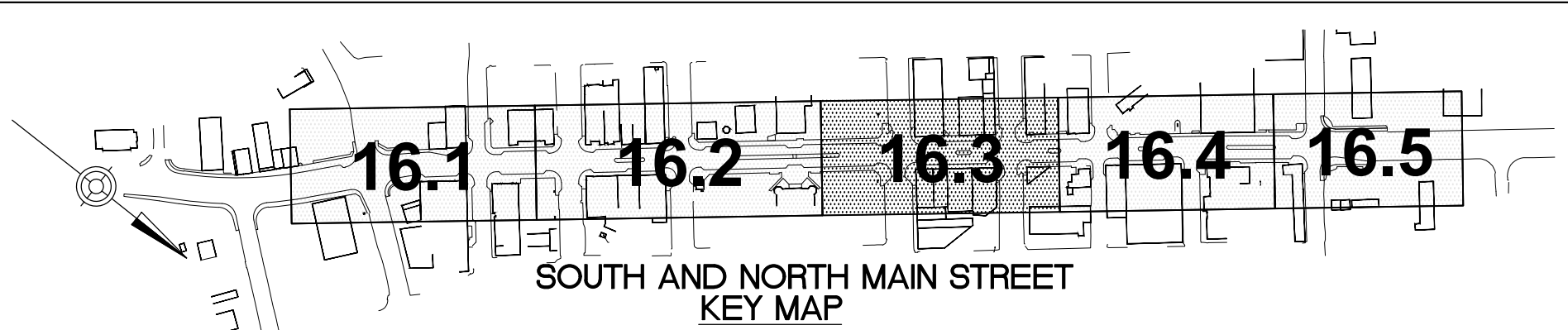


GENERAL NOTES:

1. THE STANDARD SPECIFICATIONS FOR THIS PROJECT ARE TENNESSEE DEPARTMENT OF TRANSPORTATION (TDOT) STANDARD SPECIFICATIONS FOR ROAD AND BRIDGE CONSTRUCTION.
2. CONSTRUCTION OF STREET LIGHTING SYSTEM SHALL COMPLY WITH TDOT SPECIFICATIONS SECTION 714 AND AS AMENDED BY THESE DRAWINGS.
3. CONSTRUCTION DETAILS NOT SHOWN ON THE DRAWINGS ARE TO CONFORM TO THE TDOT STANDARD DRAWINGS.
4. NEW UNDERGROUND RACEWAYS ARE SHOWN DIAGRAMMATICALLY. ROUTE TO AVOID CONFLICTS WITH EXISTING AND PROPOSED UTILITY MANHOLES AND PULLBOXES.
5. REFER TO CROSS SECTION DETAILS ON CURBING AND SIDEWALK PLANS FOR GENERAL LOCATION OF UNDERGROUND RACEWAYS.
6. REFER TO LANDSCAPE PLANS TO VERIFY AREAS OF GENERAL CONTRACT WORK. ELECTRICAL CONTRACTOR SHALL BE RESPONSIBLE FOR CUTTING AND PATCHING AREAS OUTSIDE OF NEW PAVING AND SIDEWALK AREAS.
7. REFER TO SHEET 16.9 (E-9) FOR SYMBOLS AND FIXTURES SCHEDULE.

CONTRACTOR RESPONSIBILITY MATRIX

CATEGORY	DESCRIPTION	EC	CITY	UTILITY
LIGHT POLE MATERIAL	FURNISH LIGHT POLE AND FIXTURE		X	
	INSTALL LIGHT POLE AND FIXTURE		X	
LIGHT POLE INSTALLATION	FURNISH AND INSTALL LIGHTING AND RECEPTACLE BRANCH CIRCUIT WIRING (INCLUDING ALL CONNECTIONS)		X	
	FURNISH AND INSTALL ALL CONCRETE FOUNDATION (PER THE DRAWINGS)	X		
LIGHT POLE FOUNDATION	FURNISH AND INSTALL GROUND ROD, CONDUIT, AND GROUNDING CONDUCTOR	X		
	FURNISH AND INSTALL LIGHTING AND RECEPTACLE BRANCH CIRCUIT WIRING (INCLUDING ALL CONNECTIONS AND FUSING)		X	
	FURNISH AND INSTALL PULLBOX AT EACH POLE BASE (PER THE DRAWINGS)	X		
LIGHTING CONTROL PANEL ASSEMBLY	FURNISH AND INSTALL ENTIRE ASSEMBLY (PER THE DRAWINGS)	X		
	CONDUIT FROM PANEL TO RISER POLE	X		
	SERVICE LATERAL CONDUCTORS			X
	FURNISH AND INSTALL LIGHTING AND RECEPTACLE BRANCH CIRCUIT WIRING (FROM LIGHT POLE TO BREAKER)		X	
UNDERGROUND CONDUIT/WIRING	TRENCH AND BACKFILL (INCLUDING WARNING RIBBON)	X		
	DIRECT BURY CONDUIT	X		
	FURNISH AND INSTALL ALL BRANCH CIRCUIT WIRING (PER PLANS)		X	



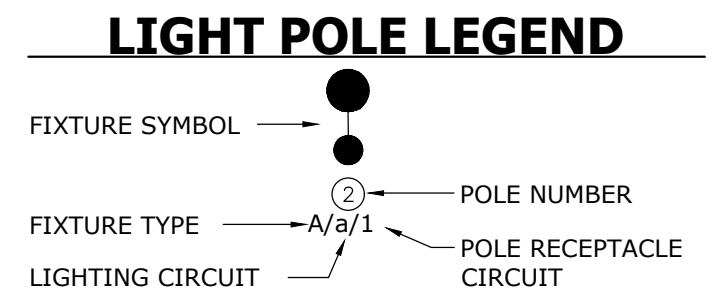
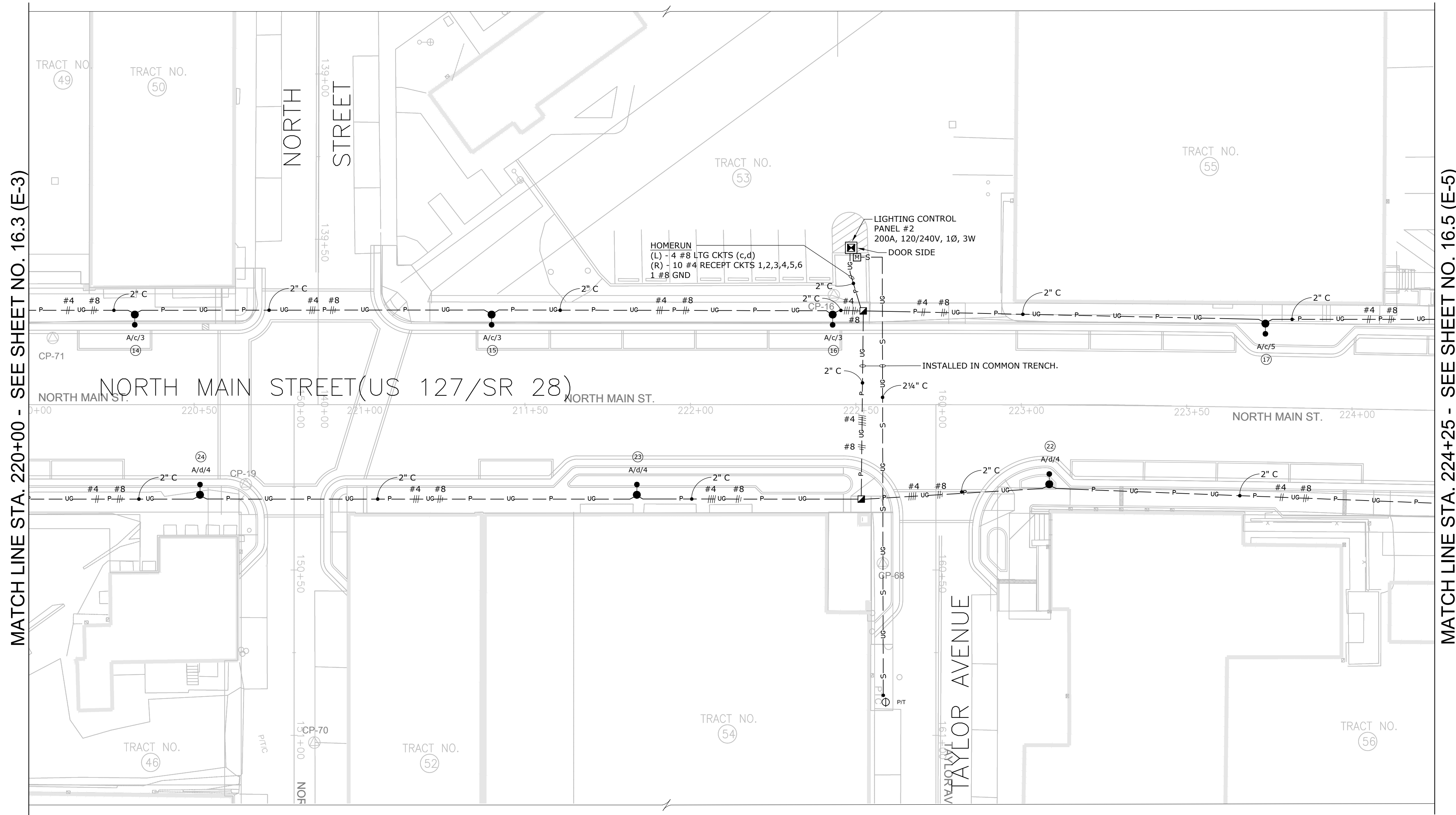
NO	REVISION	DATE

**CITY OF CROSSVILLE, TN
SIDEWALK REPLACEMENT
PROJECT**

SCALE: AS SHOWN
DATE: 6/25/21
DESIGNED BY: DH
DRAWN BY: PTA
CHECKED BY: DH

**LIGHTING PLAN
MAIN STREET
(US 127 / SR 28)**

PROJECT NO. 181048	
DRAWING NAME 16.3	
SHEET 16.3	OF 83



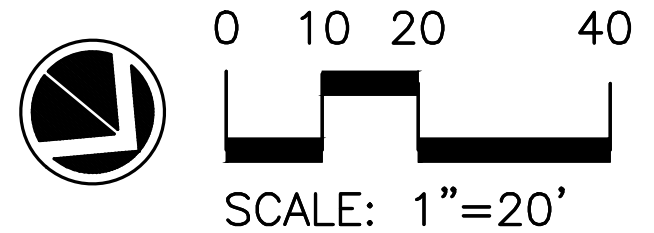
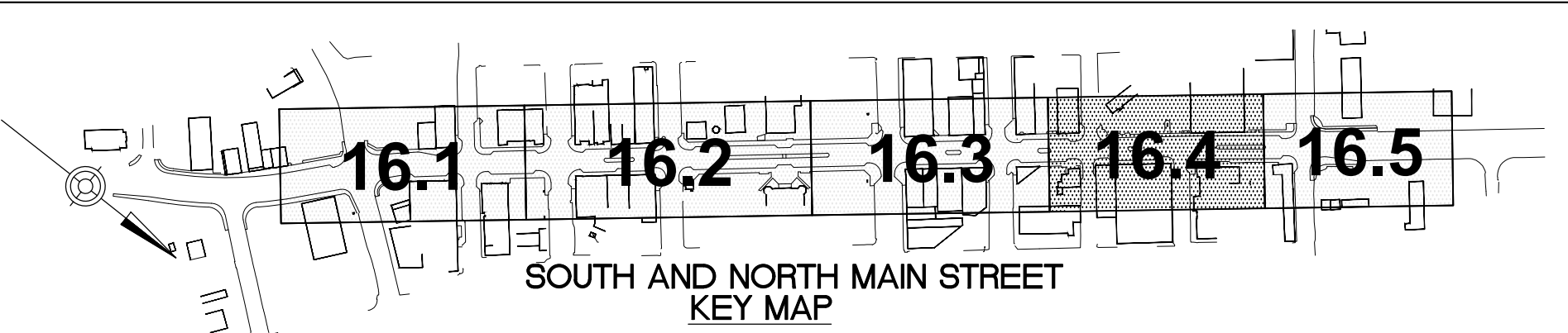
MATCH LINE STA. 220+00 - SEE SHEET NO. 16.3 (E-3)

MATCH LINE STA. 224+25 - SEE SHEET NO. 16.5 (E-5)

GENERAL NOTES:

- THE STANDARD SPECIFICATIONS FOR THIS PROJECT ARE TENNESSEE DEPARTMENT OF TRANSPORTATION (TDOT) STANDARD SPECIFICATIONS FOR ROAD AND BRIDGE CONSTRUCTION.
- CONSTRUCTION OF STREET LIGHTING SYSTEM SHALL COMPLY WITH TDOT SPECIFICATIONS SECTION 714 AND AS AMENDED BY THESE DRAWINGS.
- CONSTRUCTION DETAILS NOT SHOWN ON THE DRAWINGS ARE TO CONFORM TO THE TDOT STANDARD DRAWINGS.
- NEW UNDERGROUND RACEWAYS ARE SHOWN DIAGRAMMATICALLY. ROUTE TO AVOID CONFLICTS WITH EXISTING AND PROPOSED UTILITY MANHOLES AND PULLBOXES.
- REFER TO CROSS SECTION DETAILS ON CURBING AND SIDEWALK PLANS FOR GENERAL LOCATION OF UNDERGROUND RACEWAYS.
- REFER TO LANDSCAPE PLANS TO VERIFY AREAS OF GENERAL CONTRACT WORK. ELECTRICAL CONTRACTOR SHALL BE RESPONSIBLE FOR CUTTING AND PATCHING AREAS OUTSIDE OF NEW PAVING AND SIDEWALK AREAS.
- REFER TO SHEET 16.9 (E-9) FOR SYMBOLS AND FIXTURES SCHEDULE.

CONTRACTOR RESPONSIBILITY MATRIX				
CATEGORY	DESCRIPTION	EC	CITY	UTILITY
LIGHT POLE MATERIAL	FURNISH LIGHT POLE AND FIXTURE		X	
	INSTALL LIGHT POLE AND FIXTURE		X	
LIGHT POLE INSTALLATION	FURNISH AND INSTALL LIGHTING AND RECEPTACLE BRANCH CIRCUIT WIRING (INCLUDING ALL CONNECTIONS)		X	
	FURNISH AND INSTALL ALL CONCRETE FOUNDATION (PER THE DRAWINGS)	X		
LIGHT POLE FOUNDATION	FURNISH AND INSTALL GROUND ROD, CONDUIT, AND GROUNDING CONDUCTOR	X		
	FURNISH AND INSTALL LIGHTING AND RECEPTACLE BRANCH CIRCUIT WIRING (INCLUDING ALL CONNECTIONS AND FUSING)		X	
	FURNISH AND INSTALL PULLBOX AT EACH POLE BASE (PER THE DRAWINGS)	X		
	FURNISH AND INSTALL ENTIRE ASSEMBLY (PER THE DRAWINGS)	X		
LIGHTING CONTROL PANEL ASSEMBLY	CONDUIT FROM PANEL TO RISER POLE	X		
	SERVICE LATERAL CONDUCTORS			X
	FURNISH AND INSTALL LIGHTING AND RECEPTACLE BRANCH CIRCUIT WIRING (FROM LIGHT POLE TO BREAKER)		X	
UNDERGROUND CONDUIT/WIRING	TRENCH AND BACKFILL (INCLUDING WARNING RIBBON)	X		
	DIRECT BURY CONDUIT	X		
	FURNISH AND INSTALL ALL BRANCH CIRCUIT WIRING (PER PLANS)		X	



NO	REVISION	DATE

**CITY OF CROSSVILLE, TN
SIDEWALK REPLACEMENT
PROJECT**

SCALE: AS SHOWN

DATE: 6/25/21

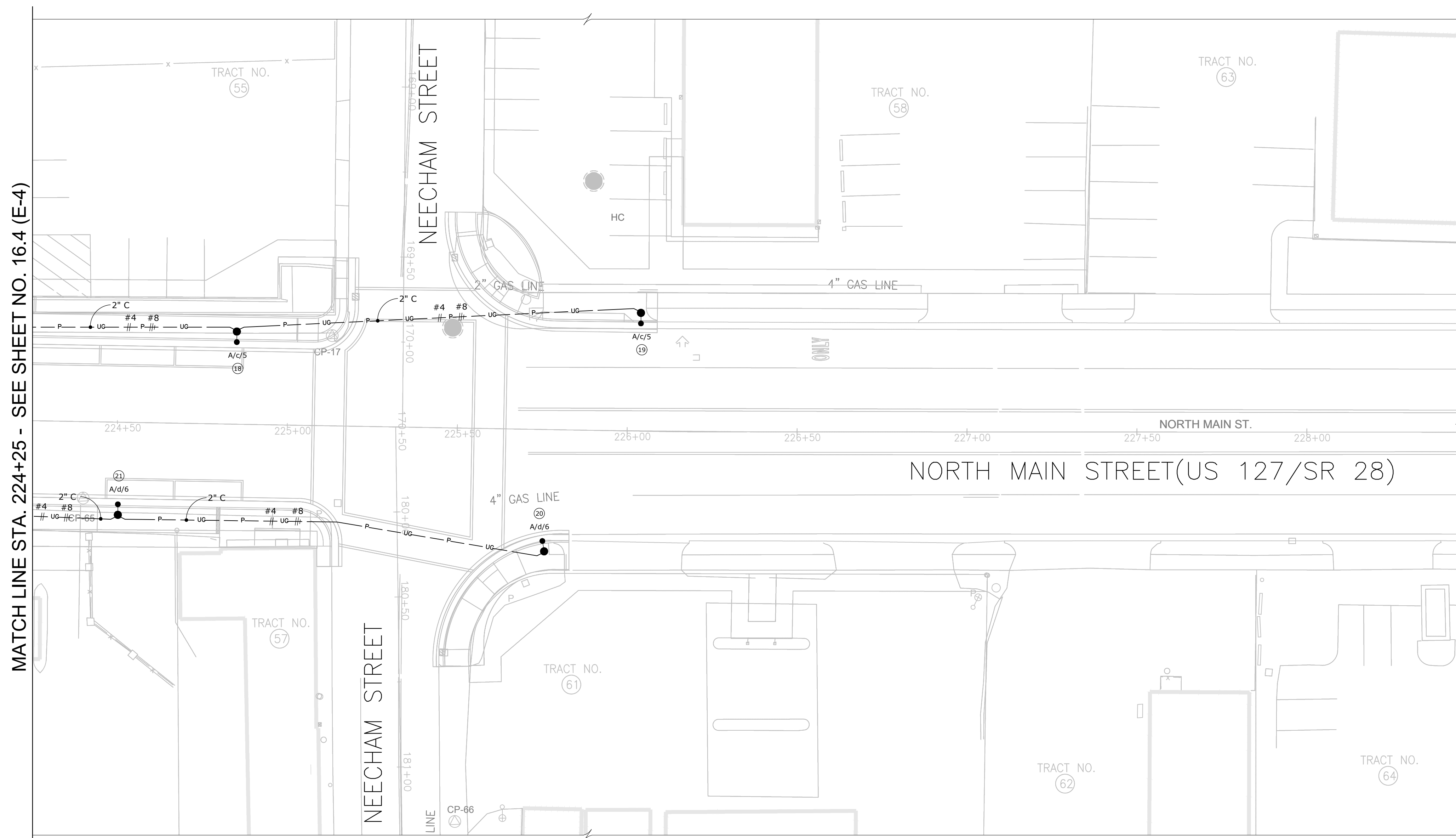
DESIGNED BY: DH

DRAWN BY: PTA

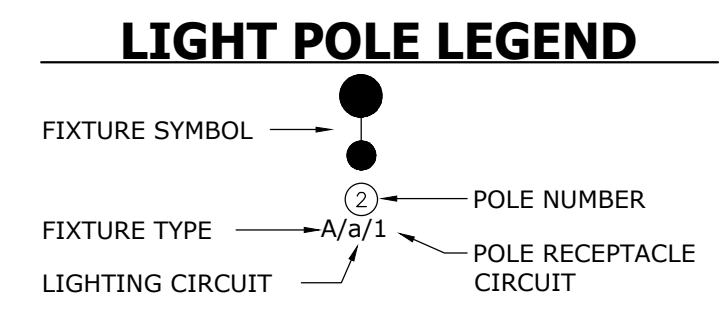
CHECKED BY: DH

**LIGHTING PLAN
MAIN STREET
(US 127 / SR 28)**

PROJECT NO:	
181048	
DRAWING NAME	
16.4	
SHEET	OF
16.4	83



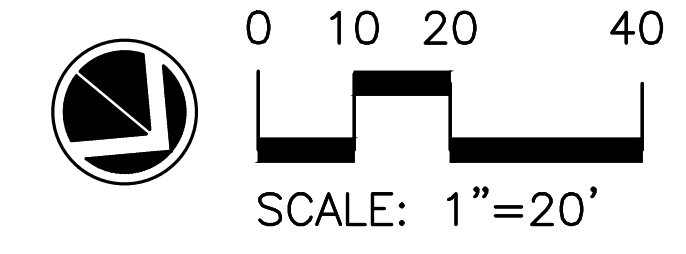
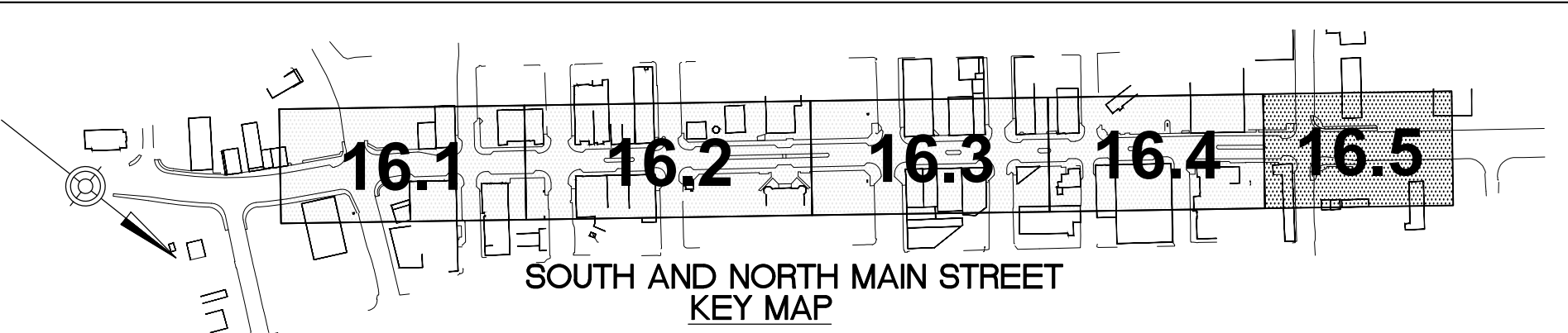
MATCH LINE STA. 224+25 - SEE SHEET NO. 16.4 (E-4)



GENERAL NOTES:

- THE STANDARD SPECIFICATIONS FOR THIS PROJECT ARE TENNESSEE DEPARTMENT OF TRANSPORTATION (TDOT) STANDARD SPECIFICATIONS FOR ROAD AND BRIDGE CONSTRUCTION.
- CONSTRUCTION OF STREET LIGHTING SYSTEM SHALL COMPLY WITH TDOT SPECIFICATIONS SECTION 714 AND AS AMENDED BY THESE DRAWINGS.
- CONSTRUCTION DETAILS NOT SHOWN ON THE DRAWINGS ARE TO CONFORM TO THE TDOT STANDARD DRAWINGS.
- NEW UNDERGROUND RACEWAYS ARE SHOWN DIAGRAMMATICALLY. ROUTE TO AVOID CONFLICTS WITH EXISTING AND PROPOSED UTILITY MANHOLES AND PULLBOXES.
- REFER TO CROSS SECTION DETAILS ON CURBING AND SIDEWALK PLANS FOR GENERAL LOCATION OF UNDERGROUND RACEWAYS.
- REFER TO LANDSCAPE PLANS TO VERIFY AREAS OF GENERAL CONTRACT WORK. ELECTRICAL CONTRACTOR SHALL BE RESPONSIBLE FOR CUTTING AND PATCHING AREAS OUTSIDE OF NEW PAVING AND SIDEWALK AREAS.
- REFER TO SHEET 16.9 (E-9) FOR SYMBOLS AND FIXTURES SCHEDULE.

CONTRACTOR RESPONSIBILITY MATRIX				
CATEGORY	DESCRIPTION	EC	CITY	UTILITY
LIGHT POLE MATERIAL	FURNISH LIGHT POLE AND FIXTURE		X	
	INSTALL LIGHT POLE AND FIXTURE		X	
LIGHT POLE INSTALLATION	FURNISH AND INSTALL LIGHTING AND RECEPTACLE BRANCH CIRCUIT WIRING (INCLUDING ALL CONNECTIONS)		X	
	FURNISH AND INSTALL ALL CONCRETE FOUNDATION (PER THE DRAWINGS)	X		
LIGHT POLE FOUNDATION	FURNISH AND INSTALL GROUND ROD, CONDUIT, AND GROUNDING CONDUCTOR	X		
	FURNISH AND INSTALL LIGHTING AND RECEPTACLE BRANCH CIRCUIT WIRING (INCLUDING ALL CONNECTIONS AND FUSING)		X	
	FURNISH AND INSTALL PULLBOX AT EACH POLE BASE (PER THE DRAWINGS)	X		
	FURNISH AND INSTALL ENTIRE ASSEMBLY (PER THE DRAWINGS)	X		
LIGHTING CONTROL PANEL ASSEMBLY	CONDUIT FROM PANEL TO RISER POLE	X		
	SERVICE LATERAL CONDUCTORS			X
	FURNISH AND INSTALL LIGHTING AND RECEPTACLE BRANCH CIRCUIT WIRING (FROM LIGHT POLE TO BREAKER)		X	
UNDERGROUND CONDUIT/WIRING	TRENCH AND BACKFILL (INCLUDING WARNING RIBBON)	X		
	DIRECT BURY CONDUIT	X		
	FURNISH AND INSTALL ALL BRANCH CIRCUIT WIRING (PER PLANS)		X	



162-15-05 - Don Muckley - 2021-06-22 03:37 PM



NO	REVISION	DATE

**CITY OF CROSSVILLE, TN
SIDEWALK REPLACEMENT
PROJECT**

SCALE:	AS SHOWN
DATE:	6/25/21
DESIGNED BY:	DH
DRAWN BY:	PTA
CHECKED BY:	DH

**LIGHTING PLAN
MAIN STREET
(US 127 / SR 28)**

PROJECT NO:		181048
DRAWING NAME		16.5
SHEET	OF	16.5 83