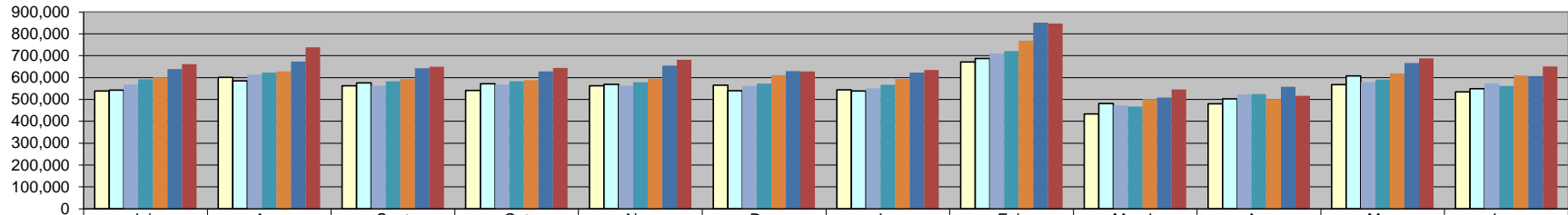
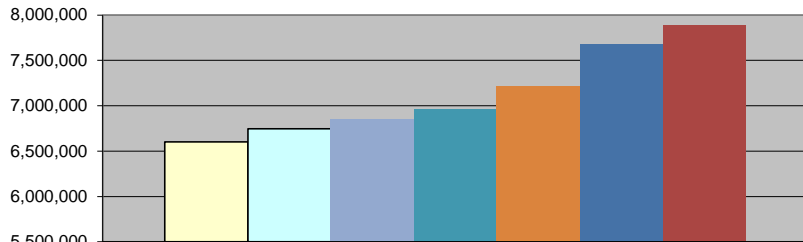


Sales Tax



	July	Aug	Sept	Oct	Nov	Dec	Jan	Feb	March	Apr	May	June
□ FY 10/11	538,673	600,275	562,593	541,360	562,799	565,057	544,297	671,239	433,357	480,426	567,763	534,779
□ FY 11/12	542,564	584,673	575,593	571,365	568,438	539,521	538,581	686,878	481,137	503,099	607,376	548,870
■ FY 12/13	568,911	613,425	563,223	567,870	563,266	562,049	550,910	710,120	472,502	523,568	579,342	574,079
■ FY 13/14	592,201	622,250	583,383	583,302	578,810	571,889	566,907	720,995	468,129	524,484	590,302	562,391
■ FY 14/15	601,996	627,721	593,548	587,893	595,353	610,479	594,131	768,882	502,422	502,612	618,980	609,073
■ FY 15/16	639,340	673,495	642,074	627,579	655,121	629,502	622,916	851,452	508,499	558,191	666,159	606,228
■ FY 16/17	661,460	738,232	648,935	643,501	680,608	627,480	634,569	846,643	545,448	516,060	687,242	650,129

Sales Tax Revenue



	FY YTD
□ FY 10/11	6,602,617
□ FY 11/12	6,748,096
■ FY 12/13	6,849,266
■ FY 13/14	6,965,044
■ FY 14/15	7,213,092
■ FY 15/16	7,680,555
■ FY 16/17	7,880,307

***COLLECTIONS IN THE CITY OF CROSSVILLE**

State of TN Cost of Administration	1.125%	\$1,328,167.32
Net Collections (sent to trustee's office)		\$14,775.66
		\$1,313,391.66

Trustee of Cumberland County	1%	\$13,133.92
Net To Be Distributed		\$1,300,257.74

CITY OF CROSSVILLE SPLIT

Check to City of Crossville	\$650,128.87
Check to Cumberland County Board of Education	\$650,128.87

*Totals reported in June, but actually collected in April