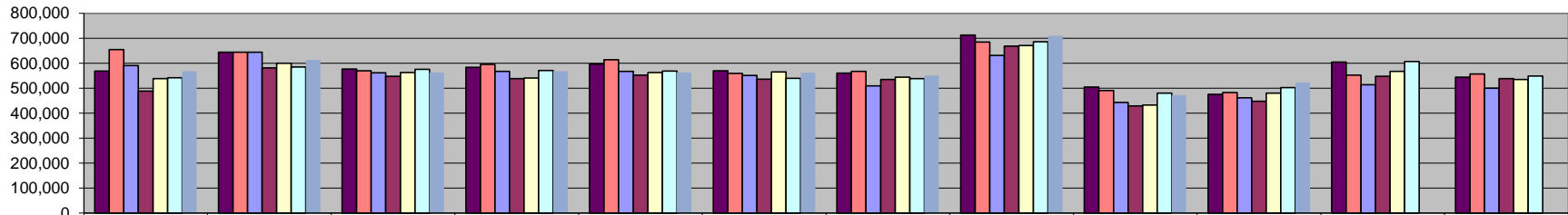
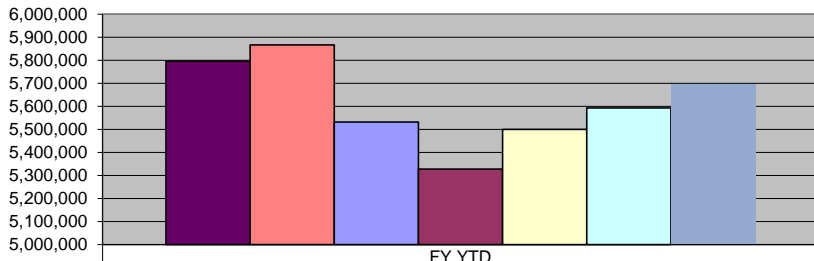


Sales Tax



	July	Aug	Sept	Oct	Nov	Dec	Jan	Feb	March	Apr	May	June
■ FY 06/07	568,739	644,773	576,686	583,998	596,589	569,560	560,598	713,160	504,723	476,318	604,879	544,035
■ FY 07/08	654,645	644,912	570,078	595,223	614,857	559,519	567,762	685,134	491,196	482,367	553,238	557,801
■ FY 08/09	591,118	644,757	562,221	568,181	567,469	551,163	509,440	632,057	443,797	461,586	513,995	500,202
■ FY 09/10	488,728	581,783	548,598	538,171	552,339	536,537	535,383	669,430	429,062	447,590	547,557	539,256
■ FY 10/11	538,673	600,275	562,593	541,360	562,799	565,057	544,297	671,239	433,357	480,426	567,763	534,779
■ FY 11/12	542,564	584,673	575,593	571,365	568,438	539,521	538,581	686,878	481,137	503,099	607,376	548,870
■ FY 12/13	568,911	613,425	563,223	567,870	563,266	562,049	550,910	710,120	472,502	523,568		

Sales Tax Revenue



	FY YTD
■ FY 06/07	5,795,143
■ FY 07/08	5,865,693
■ FY 08/09	5,531,790
■ FY 09/10	5,327,620
■ FY 10/11	5,500,075
■ FY 11/12	5,591,850
■ FY 12/13	5,695,845

*COLLECTIONS IN THE CITY OF CROSSVILLE

State of TN Cost of Administration	1.125%	\$1,069,748.63
Net Collections (sent to trustee's office)		(\$12,034.67)
		\$1,057,713.96

Trustee of Cumberland County

Net To Be Distributed	1%	(\$10,577.13)
		\$1,047,136.83

CITY OF CROSSVILLE SPLIT

Check to City of Crossville	\$523,568.41
Check to Cumberland County Board of Education	\$523,568.42
	\$1,047,136.83

*Totals reported in April, but actually collected in February