



I HEREBY CERTIFY THAT THESE DRAWINGS HAVE BEEN PREPARED UNDER MY DIRECT SUPERVISION AND THAT TO THE BEST OF MY KNOWLEDGE AND BELIEF, THEY COMPLY WITH THE BUILDING CODES AND ORDINANCES OF THE LOCAL MUNICIPALITY.

REVISIONS

Table with columns: REV., DATE, DESCRIPTION. Row 0: 2025.02.20 INITIAL SITE PLAN

CONSULTANTS

PROJECT INFORMATION: SITE DIMENSIONAL PLAN, WHATABURGER - CROSSVILLE, I-40 AND GENESIS ROAD, CROSSVILLE, TN 38555 (CUMBERLAND COUNTY)

SHEET MANAGEMENT

PROJECT NUMBER: MWB - CROSSVILLE, ISSUED DATE: 2025.02.20, DRAWN BY: OP, CHECKED BY: TK, PROJ. MGR: T. OSWALD

SHEET NUMBER

C1.20

GENERAL SITE NOTES:

- 1. ALL DIMENSIONS ARE TO FACE OF CURB UNLESS NOTED OTHERWISE.
2. CONTRACTOR SHALL VERIFY SITE CONDITIONS AND DIMENSIONS BEFORE BEGINNING WORK AND NOTIFY THE ENGINEER OF ANY DISCREPANCIES.
3. CONTRACTOR SHALL REFER TO SURVEY FOR ALL INFORMATION REGARDING EXISTING CONDITIONS.
4. ALL WORK THAT OCCURS WITHIN THE PUBLIC RIGHT OF WAY SHALL BE IN ACCORDANCE WITH ALL STATE AND LOCAL REQUIREMENTS AND STANDARDS.
5. SITE GEOMETRY IS PARALLEL AND PERPENDICULAR TO THE S85°48'44" E PROPERTY LINE AND S 21°34'52" W.
6. ALL RADII ARE 3' UNLESS NOTED OTHERWISE.

PROPOSED SITE IMPROVEMENTS

- 1. TRASH ENCLOSURE, CONCRETE PAD AND PROTECTIVE BOLLARDS.
2. HEAVY DUTY BITUMINOUS PAVEMENT.
3. CONCRETE CURB AND GUTTER "CATCH".
4. CONCRETE CURB AND GUTTER "SPILL".
5. 4" PAINTED PARKING STRIPE, COLOR: WHITE.
6. VAN ACCESSIBLE PARKING SPACE WITH PAINTED ACCESSIBILITY SPACE SYMBOL AS REQUIRED BY FEDERAL, STATE OR LOCAL CODE.
7. ACCESSIBLE RESERVED PARKING SIGN AS REQUIRED BY FEDERAL, STATE OR LOCAL CODE.
8. PAINTED DIRECTIONAL TRAFFIC ARROWS. COLOR TO MATCH PARKING STRIPING.
9. PAINTED STOP BAR.
10. DRIVE-THRU MENU BOARD, FOOTINGS AND EQUIPMENT.
11. DRIVE-THRU HEIGHT CLEARANCE BAR.
12. POURED CONCRETE STRUCTURE COLLAR.
13. SIDEWALK RAMP.
14. CONCRETE PAVEMENT.
15. LIGHT DUTY BITUMINOUS PAVEMENT.
16. 1' WIDE CONCRETE STRIP.
17. CONCRETE DELIVERY RAMP.
18. TRANSFORMER PAD PER SERVICE PROVIDER SPECIFICATIONS.
19. LIGHTED BOLLARDS. LOCATIONS MUST NOT ENCROACH ON REQUIRED ACCESSIBLE PATHS OR ROUTES OF EGRESS.
20. PROTECTION BOLLARD.
21. DRIVE-THRU CANOPY.
22. RAMP FOR TRASH CART.
23. DRIVE-THRU VEHICLE LOOP DETECTOR.
24. DRIVE-THRU STRIPING.
25. CONCRETE WHEELSTOP.
26. FLAG POLE.
27. MONUMENT SIGN. SEE SIGNAGE PLANS.
28. 90° PYLON SITE SIGN. SEE SIGNAGE PLANS.

WHATABURGER NOTES:

- 1. REFER TO SIGNAGE PLANS FOR LOCATIONS OF ALL BUILDING AND STANDING WHATABURGER BRANDED SIGNAGE. CONTRACTOR SHALL IMMEDIATELY NOTIFY THE ENGINEER OF ANY DISCREPANCIES BETWEEN THE SIGNAGE PLANS AND WHAT IS SHOWN ON THESE CIVIL DRAWINGS.
2. ALL DRIVE-THRU ITEMS TO BE INSTALLED AS SHOWN ON THE ARCHITECTURAL PLANS. CONTRACTOR SHALL IMMEDIATELY NOTIFY THE ENGINEER OF ANY DISCREPANCIES BETWEEN THE ARCHITECTURAL PLANS AND WHAT IS SHOWN ON THESE CIVIL DRAWINGS.

PAVING LEGEND:

Legend showing symbols for STANDARD DUTY ASPHALT PAVEMENT, HEAVY DUTY ASPHALT PAVEMENT, COLORED CONCRETE, CONCRETE SIDEWALK, and CONCRETE PAVEMENT.

Storm water detention area needs to be shown or referenced, if underground.

GENESIS ROAD (S.R. 298)

PUBLIC R/W VARIES

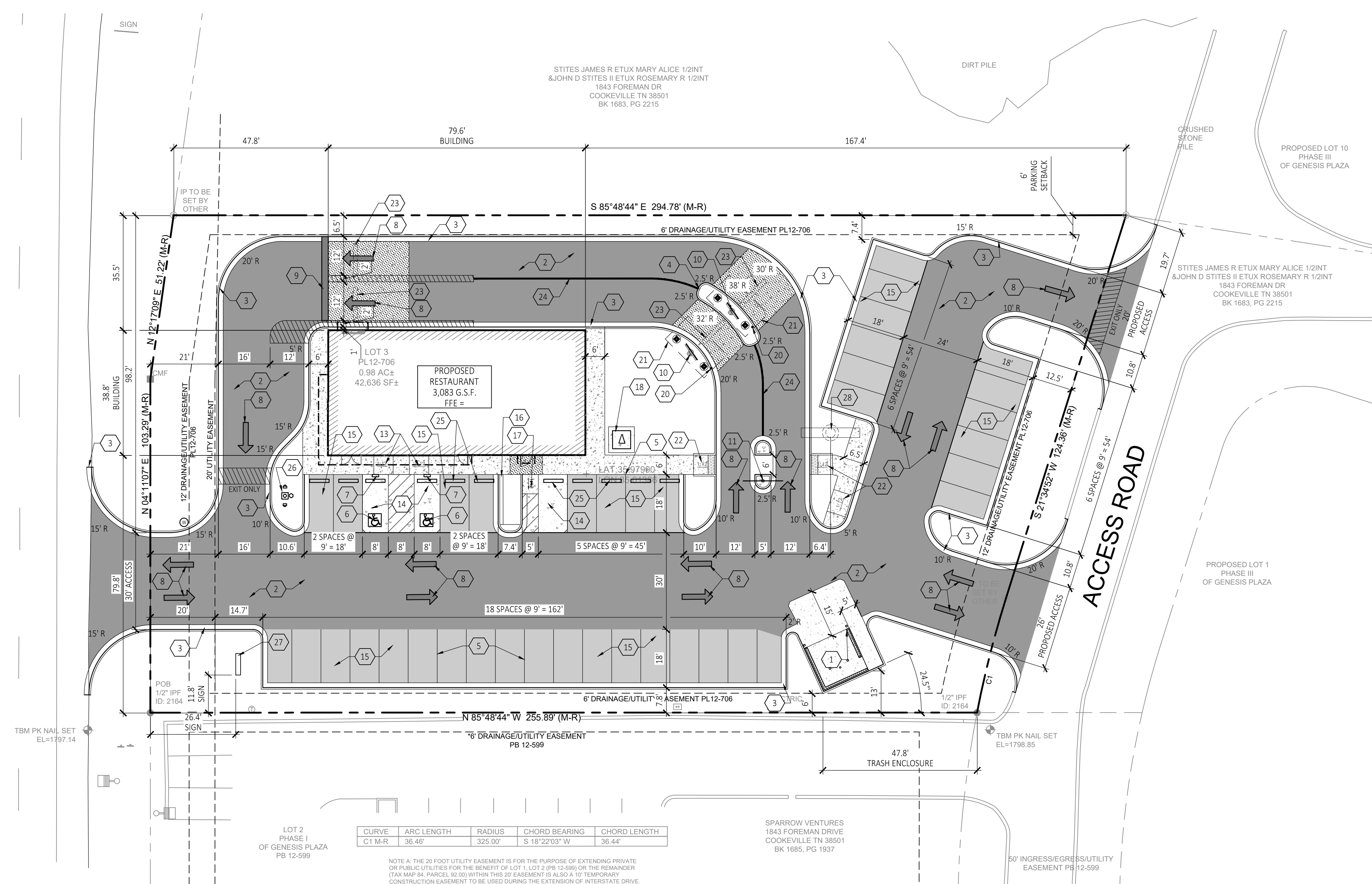


Table with columns: CURVE, ARC LENGTH, RADIUS, CHORD BEARING, CHORD LENGTH. Row 1: C1-M-R, 36.46', 325.00', S 18°22'03" W, 36.44'

NOTE: A 10' WIDE UTILITY EASEMENT IS FOR THE PURPOSE OF EXTENDING PRIVATE OR PUBLIC UTILITIES FOR THE BENEFIT OF LOT 1, LOT 2 (PB 12-599) OR THE REMAINDER (TAX MAP 84, PARCEL 92.00) WITHIN THIS 20' EASEMENT IS ALSO A 10' TEMPORARY CONSTRUCTION EASEMENT TO BE USED DURING THE EXTENSION OF INTERSTATE DRIVE.

SITE DIMENSIONAL PLAN

SCALE: 1"=20'



FILE: Z:\Shared\Clients\Michigan_WB-New Builds - East Tennessee\Crossville - Genesis_RCD\DWG\C1.20.dwg



REVISIONS

REV.	DATE	DESCRIPTION
0	2025.02.20	INITIAL SITE PLAN

CONSULTANTS

THE GENERAL CONTRACTOR (GC) IS RESPONSIBLE FOR ALL SERVICE APPLICATIONS AND FIELD COORDINATION OF UTILITY SERVICES AND FINAL CONNECTION LOCATIONS. THE GC SHALL IMMEDIATELY NOTIFY THE OWNER'S CONSTRUCTION REPRESENTATIVE OF ANY DISCREPANCIES WITH THE PLANS.

ALL LOCATIONS FOR UTILITIES ALONG PROPOSED ROAD TO BE FIELD VERIFIED BY GENERAL CONTRACTOR.

PROJECT INFORMATION

UTILITY PLAN

WHATABURGER - CROSSVILLE
I-40 AND GENESIS ROAD
CROSSVILLE, TN 38555
(CUMBERLAND COUNTY)

SHEET MANAGEMENT

PROJECT NUMBER: MWB - CROSSVILLE

ISSUED DATE: 2025.02.20

DRAWN BY: JS

CHECKED BY: OP

PROJ. MGR: T. OSWALD

THIS DOCUMENT IS AND SHALL REMAIN THE PROPERTY OF SEVAN ENGINEERING, P.C. REPRODUCTION OR ALTERATION OF THIS DOCUMENT WITHOUT THE EXPRESS WRITTEN PERMISSION OF SEVAN ENGINEERING, P.C. IS PROHIBITED.

(NOT PUBLISHED - ALL RIGHTS RESERVED)
COPYRIGHT BY SEVAN ENGINEERING, P.C. 2025

SHEET NUMBER

C1.40

- (X) PROPOSED UTILITY IMPROVEMENTS
- 1 PROVIDE AND INSTALL TWO (2) 4" SCHEDULE 40 PVC CONDUITS (WITH TWO (2) PULL STRINGS EACH) FROM UTILITY POLE TO THE TRANSFORMER. FIELD VERIFY AND COORDINATE EXACT CONDUIT ROUTING PRIOR TO CONSTRUCTION AND COORDINATE WITH CLIENT CONSTRUCTION REPRESENTATIVE.
 - 2 GENERAL CONTRACTOR TO PROVIDE AND INSTALL TRANSFORMER PAD PER SERVICE PROVIDER SPECIFICATIONS RELATING TO LOCATION CONDUIT STUB-UP LOCATIONS, PAD SIZE AND OBSTRUCTION CLEARANCE.
 - 3 ELECTRIC SERVICE PROVIDE AND INSTALL (3) 3" SCHEDULE 40 PVC CONDUIT, (WITH TWO (2) PULL STRINGS) FOR ELECTRIC SUPPLY FROM THE TRANSFORMER TO BUILDING CONNECTION POINT. FIELD VERIFY AND COORDINATE EXACT CONDUIT ROUTING WITH THE CLIENT CONSTRUCTION REPRESENTATIVE PRIOR TO PROCEEDING. CONTRACTOR TO INSTALL SERVICE PER ALL STATE AND LOCAL CODES, POWER COMPANY, N.F.P.A., AND N.E.C. STANDARDS AND COORDINATE WITH THE POWER COMPANY TO VERIFY THE FINAL DESIGN AND INSTALLATION FEE ONCE A FORMAL WORK ORDER HAS BEEN SUBMITTED.
 - 4 DRIVE THRU EQUIPMENT. PROVIDE CONDUIT PER ELECTRICAL SITE PLAN.
 - 5 SITE SIGN. PROVIDE AND INSTALL (2) 1" PVC SCH 40 CONDUITS TO ELECTRICAL PANEL. SEE ARCHITECTURAL ELECTRICAL PLANS FOR CIRCUITING.
 - 6 TELECOMMUNICATION SERVICE. G.C. TO PROVIDE AND INSTALL (1) 2" CONDUIT W/ PULL STRING. VERIFY EXACT ROUTING AND TERMINATION REQUIREMENTS WITH SERVICE COMPANY BEFORE STARTING WORK. GENERAL CONTRACTOR TO COORDINATE WITH OTHER UTILITIES, UTILIZE SHARED TRENCHING IF PERMITTED AND COORDINATE ROUTING AND POINT OF CONNECTION WITH CLIENT CONSTRUCTION REPRESENTATIVE.
 - 7 GREASE TRAP AND SAMPLE BOX. CONNECTED TO SANITARY SERVICE. SEE ARCHITECTURAL PLANS. SEE PLUMBING PLANS FOR SIZING. MINIMUM CAPACITY OF 1,500 GALLONS.
 - 8 PROVIDE AND INSTALL 6" PVC SDR-26 SANITARY SERVICE AT MIN. 1% SLOPE WITH CLEAN-OUTS 5.0' OUTSIDE OF FOUNDATION AND AT EVERY HORIZONTAL AND VERTICAL BEND PER CLEAN-OUT DETAIL. COORDINATE LOCATION OF SANITARY SEWER LATERAL THROUGH FOUNDATION WITH STRUCTURAL DRAWINGS. MAINTAIN A MINIMUM OF 30" HORIZONTAL AND 18" VERTICAL SEPARATION FROM WATER. MAKE CONNECTION TO EXISTING SANITARY MAIN PER SERVICE PROVIDER AND OR MUNICIPAL STANDARDS.
 - 9 2" DOMESTIC WATER SERVICE. PIPING TO BE COPPER TYPE K OR OWNER APPROVED EQUIVALENT. MINIMUM BURIAL DEPTH TO BE 5.0' BELOW FINISHED GRADE. PROVIDE 18" CLEARANCE AT ALL UTILITY CROSSINGS. CONTRACTOR TO COORDINATE LOCATION OF SANITARY SEWER LATERAL THROUGH FOUNDATION WITH STRUCTURAL DRAWINGS. VERIFY REQUIREMENTS OF LOCAL CODES, UTILITY COMPANIES AND GOVERNING OFFICIALS. INCLUDE IN BASE BID ALL VALVES, PIPING, STRUCTURES, ETC. THAT WILL BE REQUIRED.
 - 10 2" DOMESTIC WATER METER AND BACKFLOW PREVENTER PER MUNICIPAL STANDARDS.

STORMWATER NOTE:

THE EXISTING SITE RUNOFF DRAINS TO DRAINAGE DITCH ALONG GENESIS ROAD ON THE WEST SIDE OF THE SITE AND IS CONVEYED TO AN

UTILITY EASEMENT NOTE:

REFER TO THE BOUNDARY/TOPOGRAPHIC SURVEY PREPARED BY VICK SURVEYING FOR INFORMATION REGARDING EXISTING EASEMENTS.

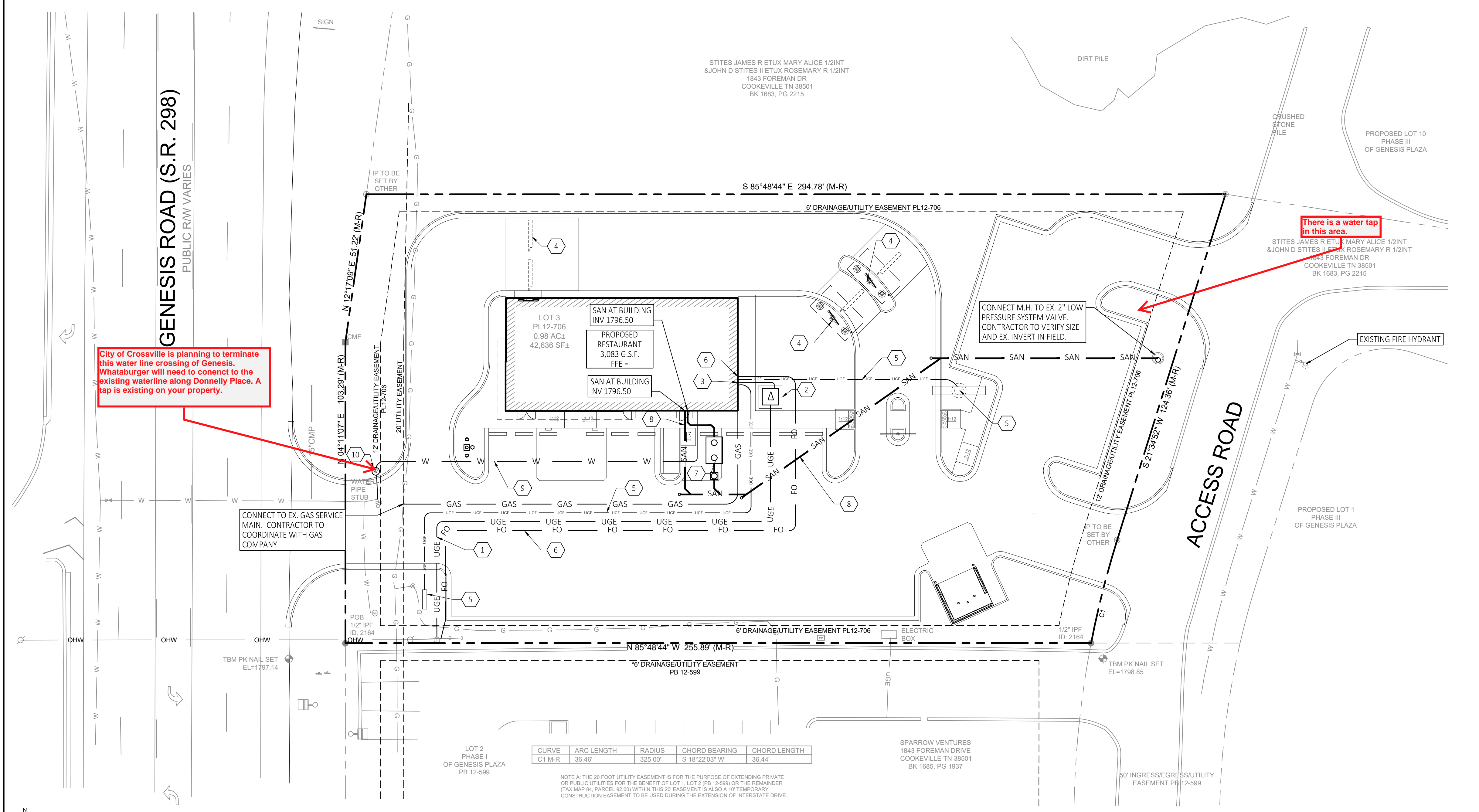
UTILITY SERVICE NOTE:

THE GENERAL CONTRACTOR (GC) IS RESPONSIBLE FOR ALL SERVICE APPLICATIONS AND FIELD COORDINATION OF UTILITY SERVICES AND FINAL CONNECTION LOCATIONS. THE GC SHALL IMMEDIATELY NOTIFY THE OWNER'S CONSTRUCTION REPRESENTATIVE OF ANY DISCREPANCIES WITH THE PLANS.

ALL LOCATIONS FOR UTILITIES ALONG PROPOSED ROAD TO BE FIELD VERIFIED BY GENERAL CONTRACTOR.

PROPOSED UTILITY LEGEND:

STORM SEWER	— STM —	STM
ROOF DRAIN	— DR —	DR
SANITARY SEWER	— SAN —	SAN
WATER MAIN/SERVICE	— W —	W
GAS MAIN/SERVICE	— GAS —	GAS
ELECTRIC SERVICE	— UGE —	UGE
TELEPHONE SERVICE	— UGT —	UGT
OVERHEAD UTILITIES	— OH —	OH
MANHOLE		
CATCH BASIN		
FLARED END SECTION		
CLEANOUT	CO	
YARD BASIN		
SANITARY MANHOLE		
SANITARY CLEANOUT	CO	
WATER VALVE		
FIRE HYDRANT		
TRANSFORMER		
LIGHT POLE		
FUEL VENT		
AIR TOWER		



City of Crossville is planning to terminate this water line crossing of Genesis. Whataburger will need to connect to the existing waterline along Donnelly Place. A tap is existing on your property.

There is a water tap in this area.