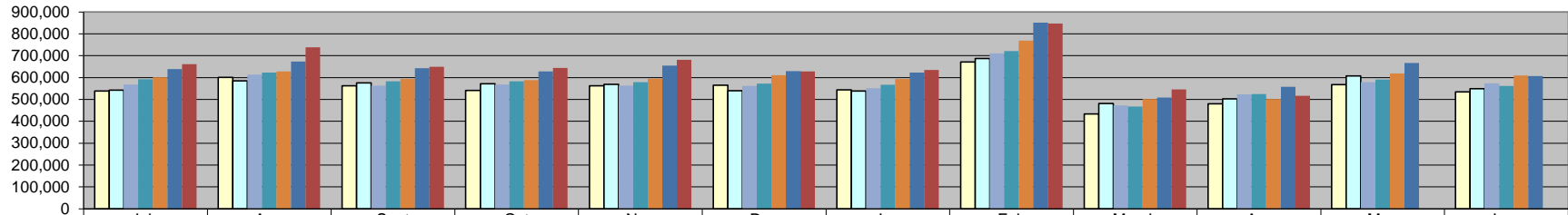
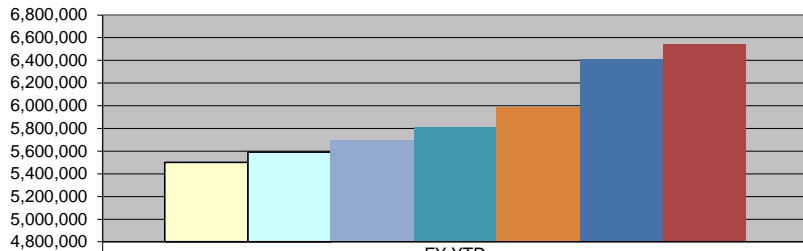


Sales Tax



| | July | Aug | Sept | Oct | Nov | Dec | Jan | Feb | March | Apr | May | June |
|------------|---------|---------|---------|---------|---------|---------|---------|---------|---------|---------|---------|---------|
| □ FY 10/11 | 538,673 | 600,275 | 562,593 | 541,360 | 562,799 | 565,057 | 544,297 | 671,239 | 433,357 | 480,426 | 567,763 | 534,779 |
| □ FY 11/12 | 542,564 | 584,673 | 575,593 | 571,365 | 568,438 | 539,521 | 538,581 | 686,878 | 481,137 | 503,099 | 607,376 | 548,870 |
| ■ FY 12/13 | 568,911 | 613,425 | 563,223 | 567,870 | 563,266 | 562,049 | 550,910 | 710,120 | 472,502 | 523,568 | 579,342 | 574,079 |
| ■ FY 13/14 | 592,201 | 622,250 | 583,383 | 583,302 | 578,810 | 571,889 | 566,907 | 720,995 | 468,129 | 524,484 | 590,302 | 562,391 |
| ■ FY 14/15 | 601,996 | 627,721 | 593,548 | 587,893 | 595,353 | 610,479 | 594,131 | 768,882 | 502,422 | 502,612 | 618,980 | 609,073 |
| ■ FY 15/16 | 639,340 | 673,495 | 642,074 | 627,579 | 655,121 | 629,502 | 622,916 | 851,452 | 508,499 | 558,191 | 666,159 | 606,228 |
| ■ FY 16/17 | 661,460 | 738,232 | 648,935 | 643,501 | 680,608 | 627,480 | 634,569 | 846,643 | 545,448 | 516,060 | | |

Sales Tax Revenue



| | FY YTD |
|------------|-----------|
| □ FY 10/11 | 5,500,075 |
| □ FY 11/12 | 5,591,850 |
| ■ FY 12/13 | 5,695,845 |
| ■ FY 13/14 | 5,812,351 |
| ■ FY 14/15 | 5,985,038 |
| ■ FY 15/16 | 6,408,169 |
| ■ FY 16/17 | 6,542,935 |

***COLLECTIONS IN THE CITY OF CROSSVILLE**

| | | |
|--|--------|----------------|
| State of TN Cost of Administration | 1.125% | \$1,054,273.73 |
| Net Collections (sent to trustee's office) | | \$11,728.63 |
| | | \$1,042,545.10 |

| | | |
|------------------------------|----|----------------|
| Trustee of Cumberland County | 1% | \$10,425.45 |
| Net To Be Distributed | | \$1,032,119.65 |

CITY OF CROSSVILLE SPLIT

| | |
|---|--------------|
| Check to City of Crossville | \$516,059.82 |
| Check to Cumberland County Board of Education | \$516,059.82 |

*Totals reported in April, but actually collected in February