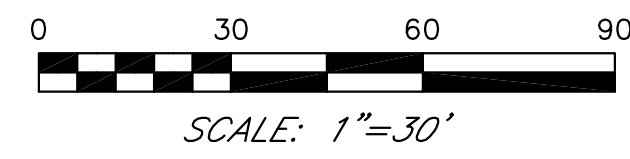
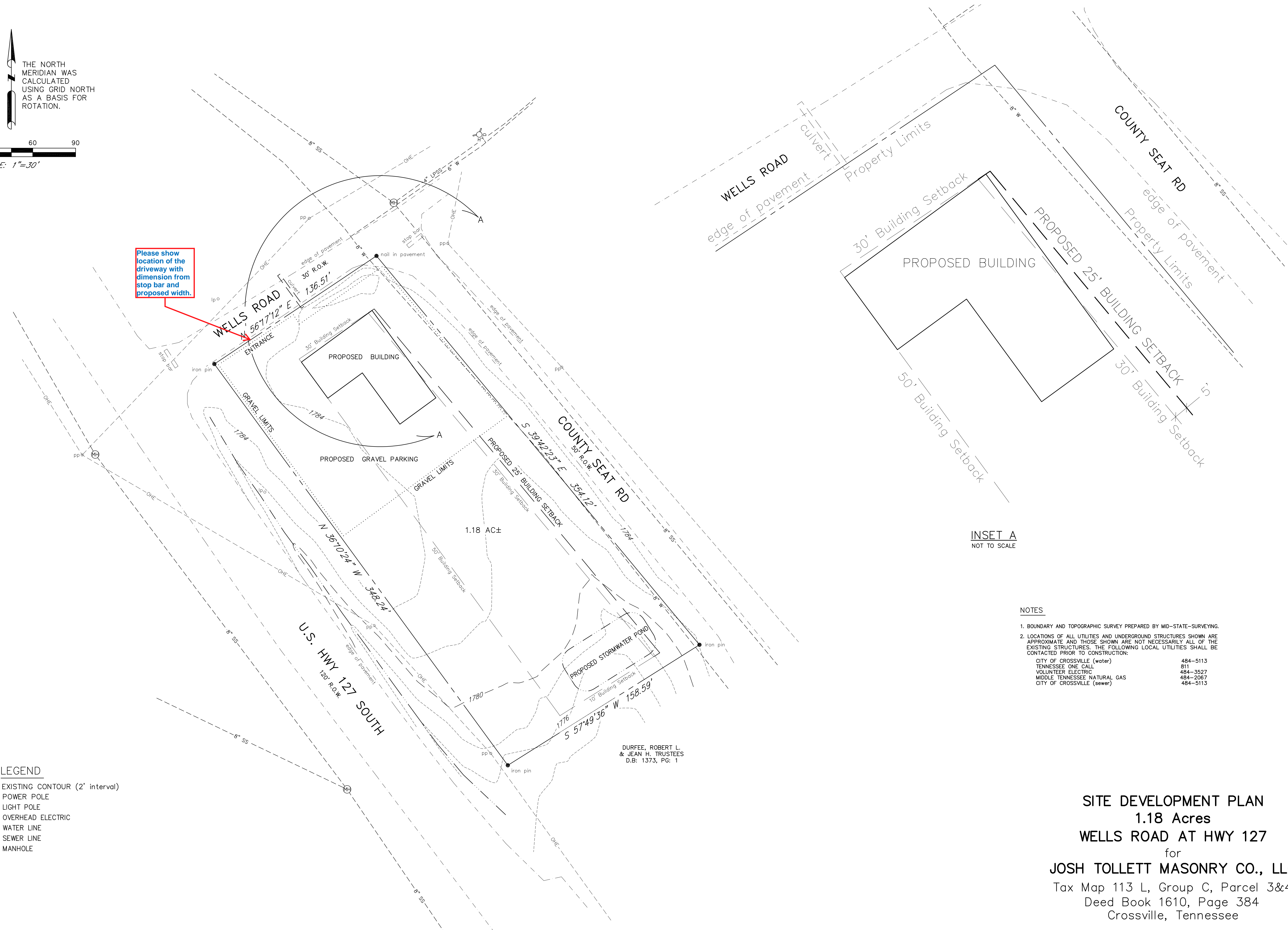


THE NORTH MERIDIAN WAS CALCULATED USING GRID NORTH AS A BASIS FOR ROTATION.



Please show location of the driveway with dimension from stop bar and proposed width.



INSET A  
NOT TO SCALE

- NOTES**
- BOUNDARY AND TOPOGRAPHIC SURVEY PREPARED BY MID-STATE-SURVEYING.
  - LOCATIONS OF ALL UTILITIES AND UNDERGROUND STRUCTURES SHOWN ARE APPROXIMATE AND THOSE SHOWN ARE NOT NECESSARILY ALL OF THE EXISTING STRUCTURES. THE FOLLOWING LOCAL UTILITIES SHALL BE CONTACTED PRIOR TO CONSTRUCTION:
 

CITY OF CROSSVILLE (water)	484-5113
TENNESSEE ONE CALL	811
VOLUNTEER ELECTRIC	484-3527
MIDDLE TENNESSEE NATURAL GAS	484-2067
CITY OF CROSSVILLE (sewer)	484-5113

**LEGEND**

- 1780--- EXISTING CONTOUR (2' interval)
- PP O POWER POLE
- LP O LIGHT POLE
- OHE OVERHEAD ELECTRIC
- 8" W WATER LINE
- 8" SS SEWER LINE
- MH MANHOLE

DURFEE, ROBERT L.  
& JEAN H. TRUSTEES  
D.B: 1373, PG: 1

**SITE DEVELOPMENT PLAN**  
**1.18 Acres**  
**WELLS ROAD AT HWY 127**  
for  
**JOSH TOLLETT MASONRY CO., LLC**  
Tax Map 113 L, Group C, Parcel 3&4  
Deed Book 1610, Page 384  
Crossville, Tennessee

