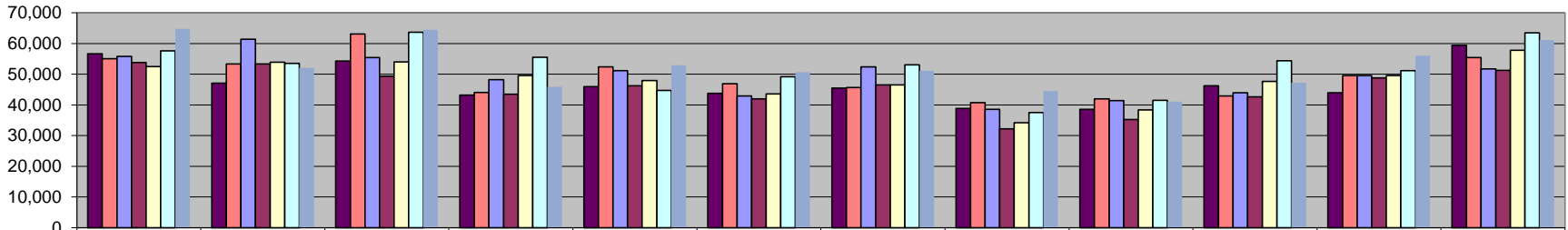
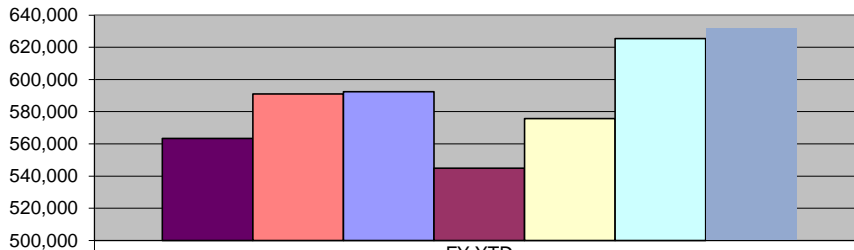


Wholesale Beer Tax



	July	Aug	Sept	Oct	Nov	Dec	Jan	Feb	March	Apr	May	June
FY06/07	56,637	47,044	54,285	43,246	46,000	43,755	45,503	38,862	38,550	46,222	43,971	59,369
FY07/08	55,019	53,387	63,103	44,011	52,358	46,915	45,688	40,757	41,991	42,881	49,549	55,397
FY08/09	55,767	61,435	55,442	48,193	51,172	42,885	52,373	38,603	41,403	43,954	49,572	51,699
FY09/10	53,803	53,340	49,337	43,465	46,227	41,977	46,550	32,228	35,281	42,637	48,770	51,267
FY10/11	52,452	53,959	54,046	49,566	47,969	43,568	46,528	34,247	38,335	47,614	49,560	57,774
FY11/12	57,631	53,580	63,656	55,500	44,752	49,146	53,108	37,520	41,472	54,350	51,163	63,502
FY 12/13	64,729	52,105	64,506	45,926	52,878	50,677	51,080	44,449	41,088	47,243	56,014	61,195

Wholesale Beer Tax Revenue



	FY YTD
FY 06/07	563,444
FY 07/08	591,056
FY 08/09	592,498
FY 09/10	544,882
FY 10/11	575,618
FY 11/12	625,380
FY 12/13	631,889