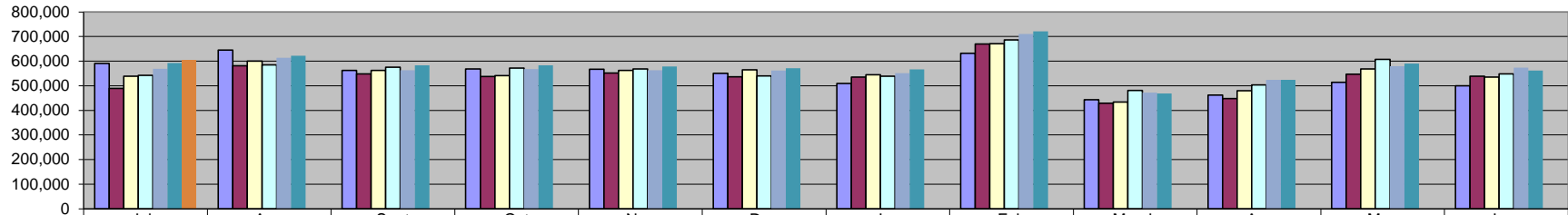
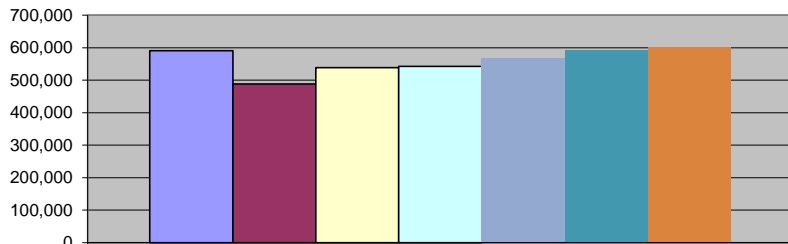


Sales Tax



	July	Aug	Sept	Oct	Nov	Dec	Jan	Feb	March	Apr	May	June
FY 08/09	591,118	644,757	562,221	568,181	567,469	551,163	509,440	632,057	443,797	461,586	513,995	500,202
FY 09/10	488,728	581,783	548,598	538,171	552,339	536,537	535,383	669,430	429,062	447,590	547,557	539,256
FY 10/11	538,673	600,275	562,593	541,360	562,799	565,057	544,297	671,239	433,357	480,426	567,763	534,779
FY 11/12	542,564	584,673	575,593	571,365	568,438	539,521	538,581	686,878	481,137	503,099	607,376	548,870
FY 12/13	568,911	613,425	563,223	567,870	563,266	562,049	550,910	710,120	472,502	523,568	579,342	574,079
FY 13/14	592,201	622,250	583,383	583,302	578,810	571,889	566,907	720,995	468,129	524,484	590,302	562,391
FY 14/15	601,996											

Sales Tax Revenue



	FY YTD
FY 08/09	591,118
FY 09/10	488,728
FY 10/11	538,673
FY 11/12	542,564
FY 12/13	568,911
FY 13/14	592,201
FY 14/15	601,996

*COLLECTIONS IN THE CITY OF CROSSVILLE

State of TN Cost of Administration 1.125% \$1,229,929.85
 Net Collections (sent to trustee's office) \$13,836.71
 \$1,216,093.14

Trustee of Cumberland County 1% \$12,160.93
 Net To Be Distributed \$1,203,932.21

CITY OF CROSSVILLE SPLIT

Check to City of Crossville \$601,996.10
 Check to Cumberland County Board of Education \$601,996.10

*Totals reported in July, but actually collected in May