

Potential Parking for Downtown

Property Name:	Total # of Spaces	# of ADA Spaces (Van Spaces)	Property Assessment	Cost per Parking Space based on Purchase of property at assessed value*	Notes:
Boston's Marlows, Depot & Bible Book Store	74	3 (1)	\$367,600.00	\$4,967.57	
Chop Shop	47	2(1)	\$124,700.00	\$2,653.19	
Old Dave's Pawn Shop	13	2(1)	\$179,800.00	\$13,830.77	
Main St. and Lantana Rd.	29	2(1)	\$75,000.00	\$2,586.21	
Lewis Property	29	2(1)	\$40,000.00	\$1,379.31	35 spaces would fit on the lot, but 6 on street parking along East St. would be removed
Craven's Property	71	3(1)	\$70,000.00	\$985.92	
Old Handle Mill & Railroad ROW					

*Cost per parking space does not include demolition of any structures currently on the property or any construction cost associated with building a parking lot (excavation, stormwater, paving, or striping)
It is also based solely on assessed value not an appraised fair market price.



**Bostons, Marlows, Depot & Bible Book Store
74 Parking Spaces**

Old Handle Mill Property & Railroad ROW

**Chop Shop
47 Parking Spaces**

**Lewis Property
29 Parking Spaces**

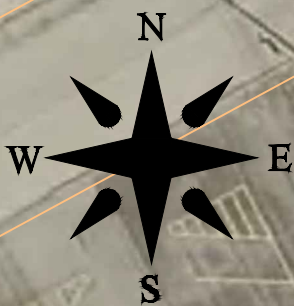
**Old Dave's Pawn Shop
13 Parking Spaces**

**Craven's Property
71 Parking Spaces**

**Main St. and Lantana Rd.
29 Parking Spaces**

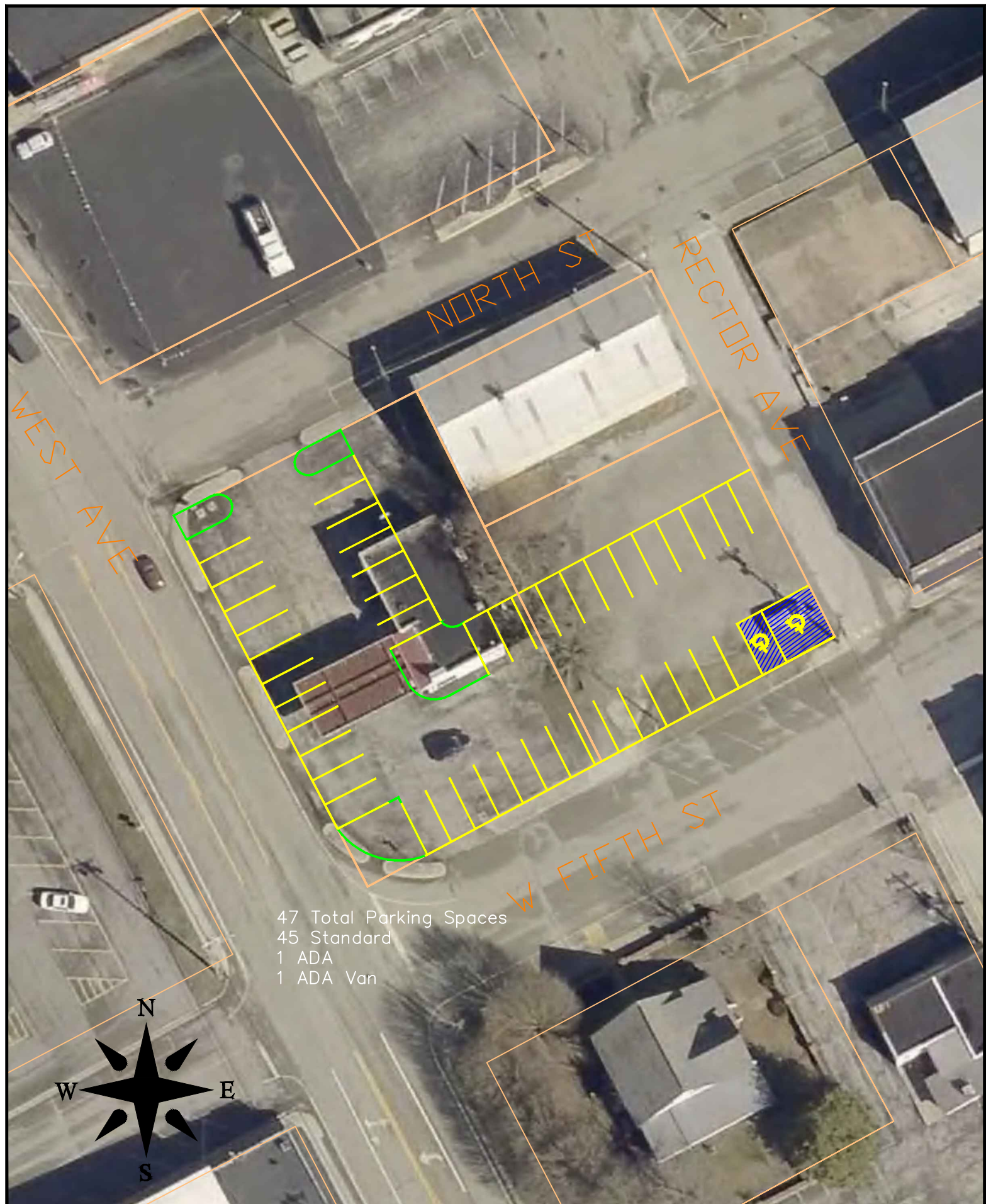


74 Total Parking Spaces
71 Standard
2 ADA
1 ADA Van

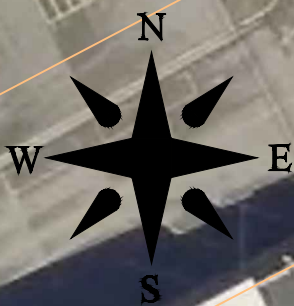


**Proposed Parking
Boston's, Marlow's, Depot, and Bible
Book Store**

**CITY OF CROSSVILLE
ENGINEERING DEPARTMENT**
392 N MAIN STREET
CROSSVILLE, TN 38555
PHONE: (931) 484-5113
FAX: (931) 484-7713



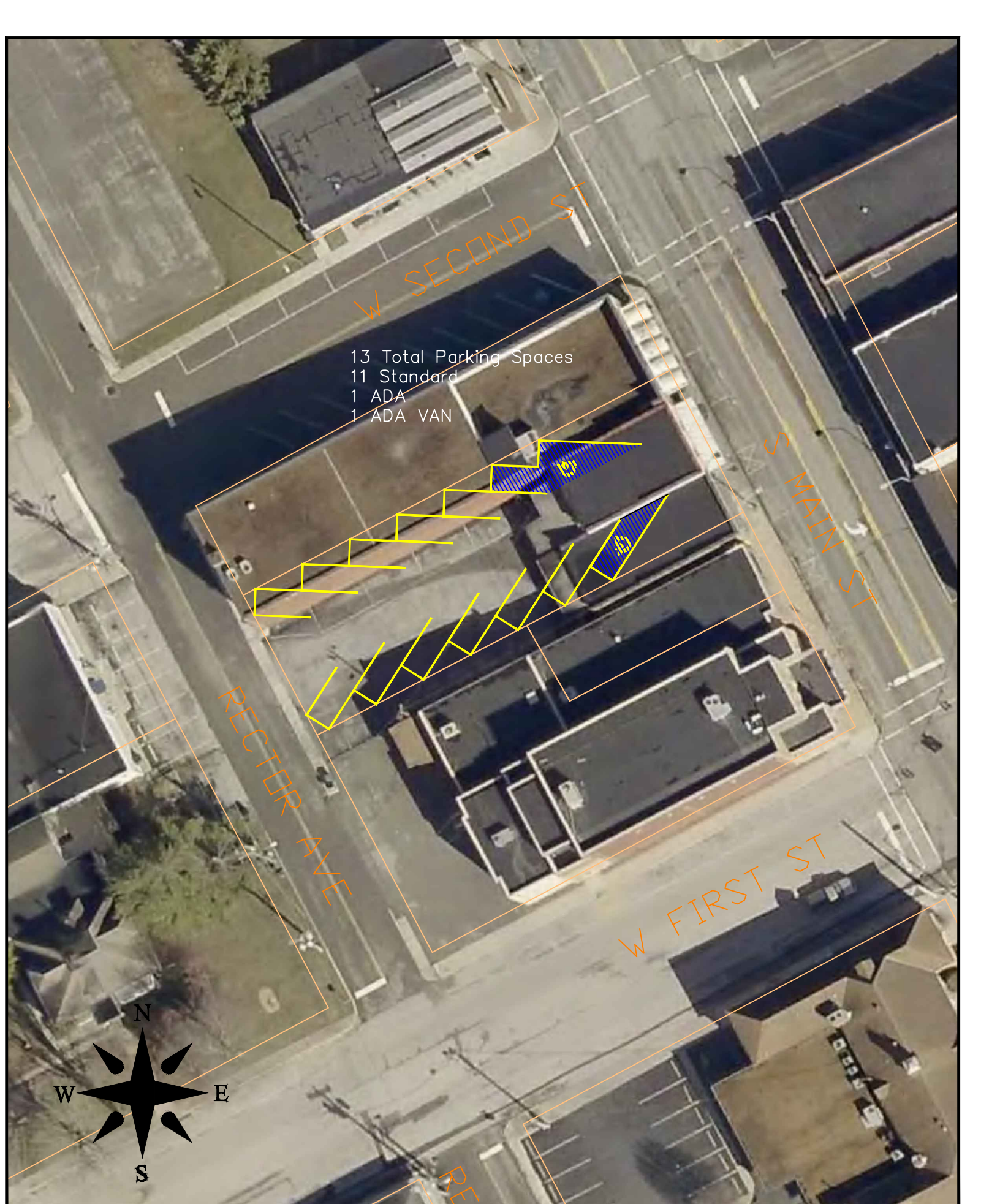
47 Total Parking Spaces
45 Standard
1 ADA
1 ADA Van



**Proposed Parking
Chop Shop**

**CITY OF CROSSVILLE
ENGINEERING DEPARTMENT**

392 N MAIN STREET
CROSSVILLE, TN 38555
PHONE: (931) 484-5113
FAX: (931) 484-7713



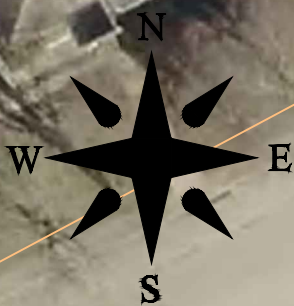
13 Total Parking Spaces
11 Standard
1 ADA
1 ADA VAN

RECTOR AVE

W SECOND ST

S MAIN ST

W FIRST ST



**Proposed Parking
Old Dave's Pawn Shop**

**CITY OF CROSSVILLE
ENGINEERING DEPARTMENT**

392 N MAIN STREET
CROSSVILLE, TN 38655
PHONE: (931) 484-5113
FAX: (931) 484-7713

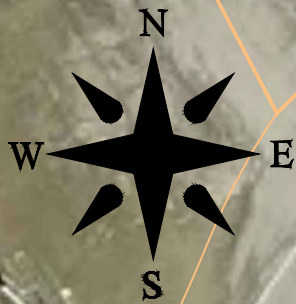
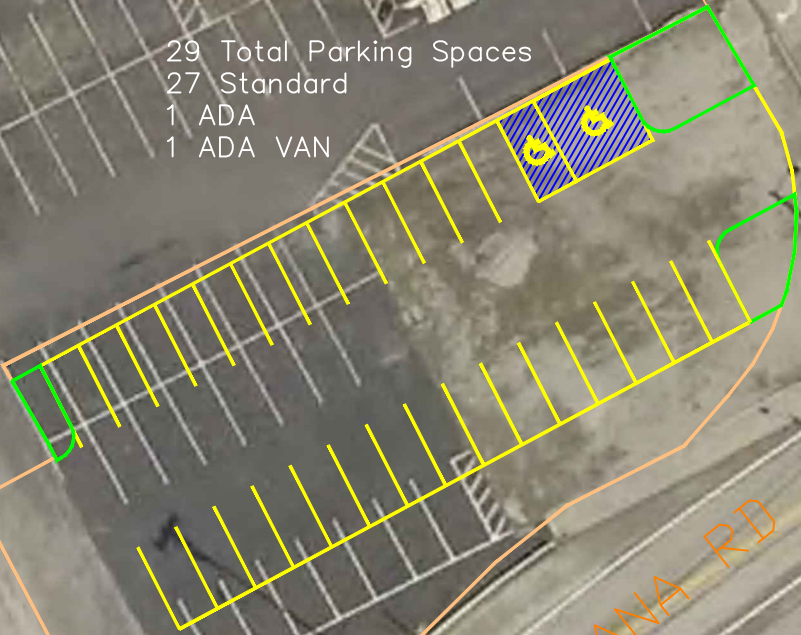
W STANLEY ST

S MAIN ST

HWY 70 E

LANTANA RD

29 Total Parking Spaces
27 Standard
1 ADA
1 ADA VAN



**Proposed Parking
Main St and Lantana Rd.**

**CITY OF CROSSVILLE
ENGINEERING DEPARTMENT**

392 N MAIN STREET
CROSSVILLE, TN 38555
PHONE: (931) 484-5113
FAX: (931) 484-7713



DIVISION DR

THURMAN AVE

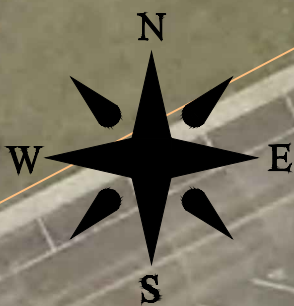
EAST ST

E SECOND ST

29 Total Parking Spaces
23 Standard
1 ADA
1 ADA VAN
-6 Remove On East St.

Lose Six Spaces On East Street.

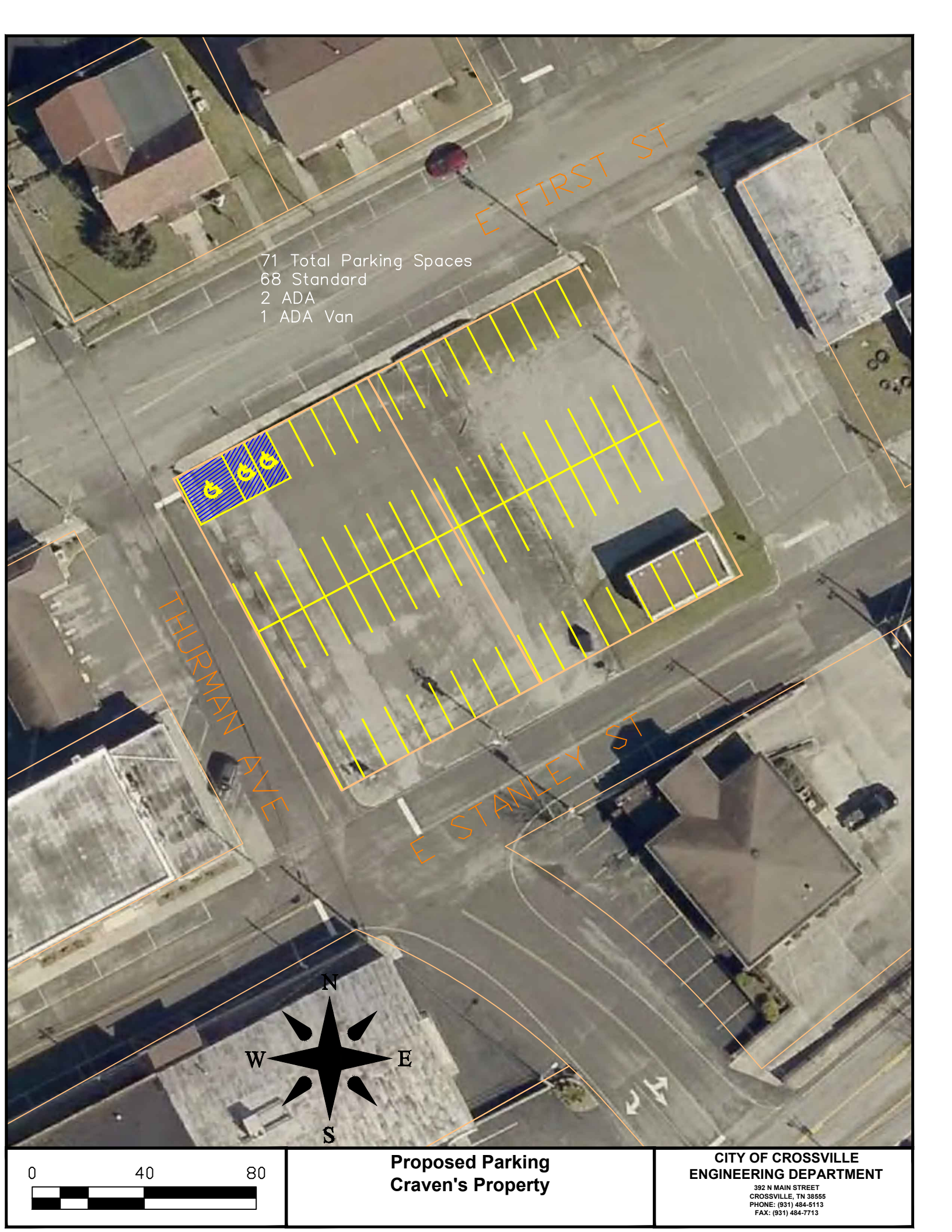
6 8



Proposed Parking Lewis Property

**CITY OF CROSSVILLE
ENGINEERING DEPARTMENT**

392 N MAIN STREET
CROSSVILLE, TN 38555
PHONE: (931) 484-5113
FAX: (931) 484-7713

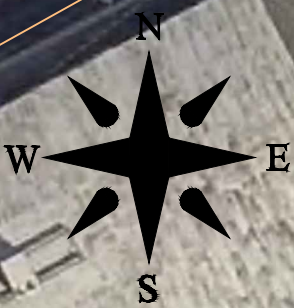


E FIRST ST

71 Total Parking Spaces
68 Standard
2 ADA
1 ADA Van

THURMAN AVE

E STANLEY ST



**Proposed Parking
Craven's Property**

**CITY OF CROSSVILLE
ENGINEERING DEPARTMENT**

392 N MAIN STREET
CROSSVILLE, TN 38555
PHONE: (931) 484-5113
FAX: (931) 484-7713