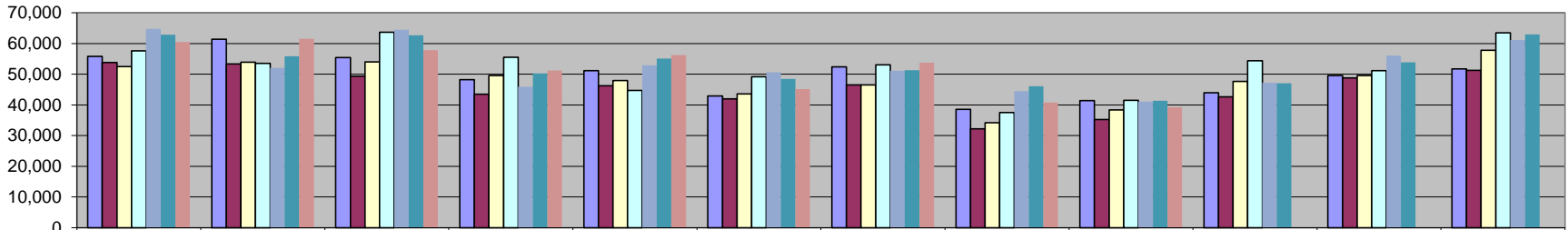
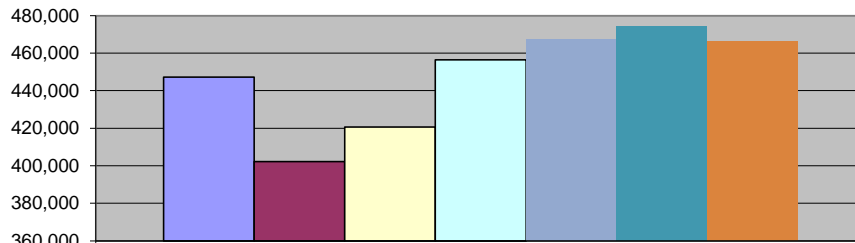


Wholesale Beer Tax



	July	Aug	Sept	Oct	Nov	Dec	Jan	Feb	March	Apr	May	June
FY08/09	55,767	61,435	55,442	48,193	51,172	42,885	52,373	38,603	41,403	43,954	49,572	51,699
FY09/10	53,803	53,340	49,337	43,465	46,227	41,977	46,550	32,228	35,281	42,637	48,770	51,267
FY10/11	52,452	53,959	54,046	49,566	47,969	43,568	46,528	34,247	38,335	47,614	49,560	57,774
FY11/12	57,631	53,580	63,656	55,500	44,752	49,146	53,108	37,520	41,472	54,350	51,163	63,502
FY 12/13	64,729	52,105	64,506	45,926	52,878	50,677	51,080	44,449	41,088	47,243	56,014	61,195
FY 13/14	62,829	55,897	62,720	50,303	55,083	48,463	51,269	46,087	41,399	47,056	53,910	62,991
FY 14/15	60,493	61,507	57,800	51,195	56,278	45,133	53,740	40,764	39,308			

Wholesale Beer Tax Revenue



	YTD
FY08/09	447,273
FY09/10	402,208
FY10/11	420,670
FY11/12	456,365
FY 12/13	467,437
FY 13/14	474,051
FY 14/15	466,219