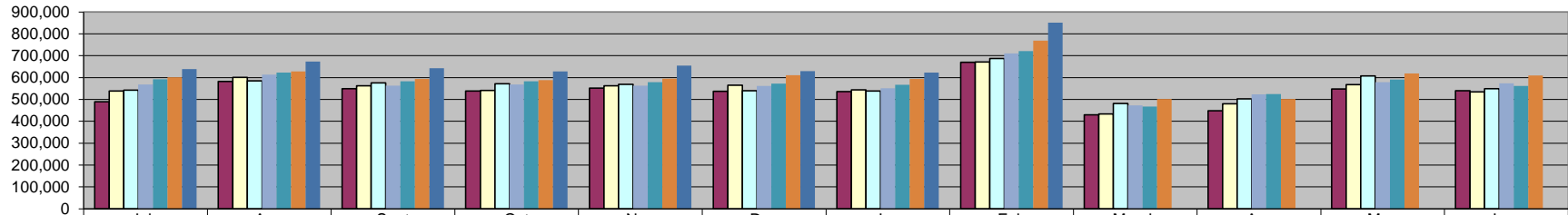
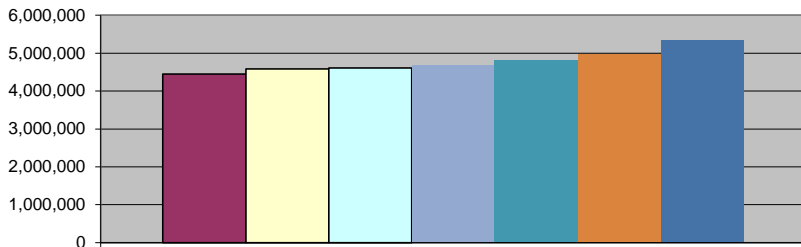


Sales Tax



	July	Aug	Sept	Oct	Nov	Dec	Jan	Feb	March	Apr	May	June
■ FY 09/10	488,728	581,783	548,598	538,171	552,339	536,537	535,383	669,430	429,062	447,590	547,557	539,256
□ FY 10/11	538,673	600,275	562,593	541,360	562,799	565,057	544,297	671,239	433,357	480,426	567,763	534,779
□ FY 11/12	542,564	584,673	575,593	571,365	568,438	539,521	538,581	686,878	481,137	503,099	607,376	548,870
■ FY 12/13	568,911	613,425	563,223	567,870	563,266	562,049	550,910	710,120	472,502	523,568	579,342	574,079
■ FY 13/14	592,201	622,250	583,383	583,302	578,810	571,889	566,907	720,995	468,129	524,484	590,302	562,391
■ FY 14/15	601,996	627,721	593,548	587,893	595,353	610,479	594,131	768,882	502,422	502,612	618,980	609,073
■ FY 15/16	639,340	673,495	642,074	627,579	655,121	629,502	622,916	851,452				

Sales Tax Revenue



	FY YTD
■ FY 09/10	4,450,969
□ FY 10/11	4,586,292
□ FY 11/12	4,607,613
■ FY 12/13	4,699,774
■ FY 13/14	4,819,738
■ FY 14/15	4,980,003
■ FY 15/16	5,341,478

*COLLECTIONS IN THE CITY OF CROSSVILLE		\$1,739,677.03
State of TN Cost of Administration	1.125%	\$19,571.37
Net Collections (sent to trustee's office)		\$1,720,105.66
Trustee of Cumberland County	1%	\$17,201.06
Net To Be Distributed		\$1,702,904.60
CITY OF CROSSVILLE SPLIT		
Check to City of Crossville		\$851,452.30
Check to Cumberland County Board of Education		\$851,452.30

*Totals reported in February, but actually collected in December