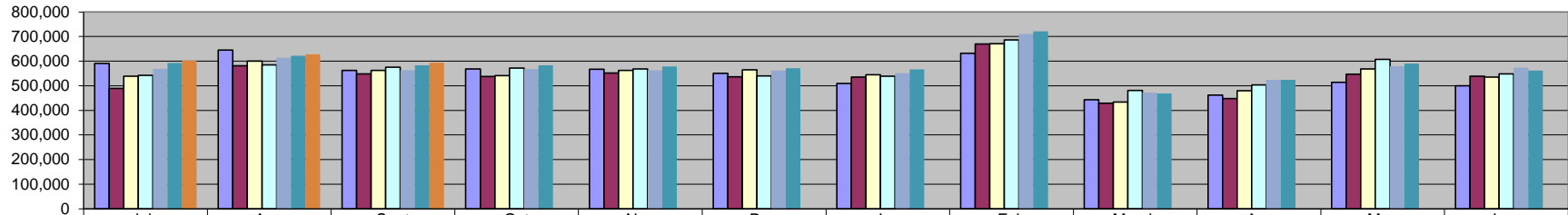
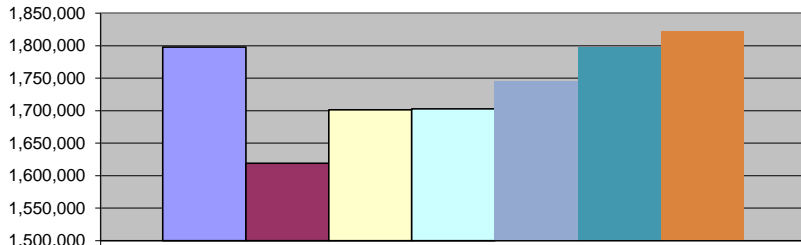


Sales Tax



	July	Aug	Sept	Oct	Nov	Dec	Jan	Feb	March	Apr	May	June
FY 08/09	591,118	644,757	562,221	568,181	567,469	551,163	509,440	632,057	443,797	461,586	513,995	500,202
FY 09/10	488,728	581,783	548,598	538,171	552,339	536,537	535,383	669,430	429,062	447,590	547,557	539,256
FY 10/11	538,673	600,275	562,593	541,360	562,799	565,057	544,297	671,239	433,357	480,426	567,763	534,779
FY 11/12	542,564	584,673	575,593	571,365	568,438	539,521	538,581	686,878	481,137	503,099	607,376	548,870
FY 12/13	568,911	613,425	563,223	567,870	563,266	562,049	550,910	710,120	472,502	523,568	579,342	574,079
FY 13/14	592,201	622,250	583,383	583,302	578,810	571,889	566,907	720,995	468,129	524,484	590,302	562,391
FY 14/15	601,996	627,721	593,548									

Sales Tax Revenue



	FY YTD
FY 08/09	1,798,096
FY 09/10	1,619,109
FY 10/11	1,701,541
FY 11/12	1,702,830
FY 12/13	1,745,559
FY 13/14	1,797,835
FY 14/15	1,823,265

*COLLECTIONS IN THE CITY OF CROSSVILLE

State of TN Cost of Administration	1.125%	\$1,212,730.47
Net Collections (sent to trustee's office)		\$13,643.22
		\$1,199,087.25

Trustee of Cumberland County	1%	\$11,990.87
Net To Be Distributed		\$1,187,096.38

CITY OF CROSSVILLE SPLIT

Check to City of Crossville	\$593,548.19
Check to Cumberland County Board of Education	\$593,548.19

*Totals reported in September, but actually collected in July