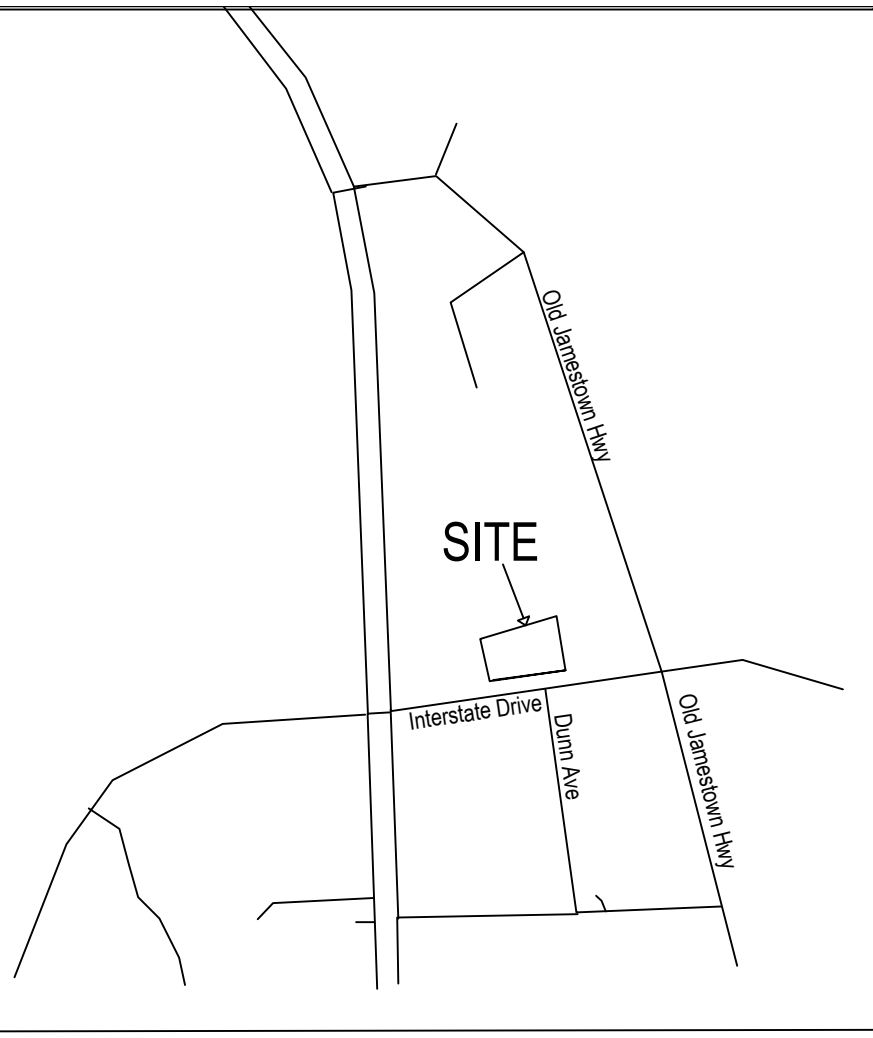


VICINITY MAP NOT TO SCALE

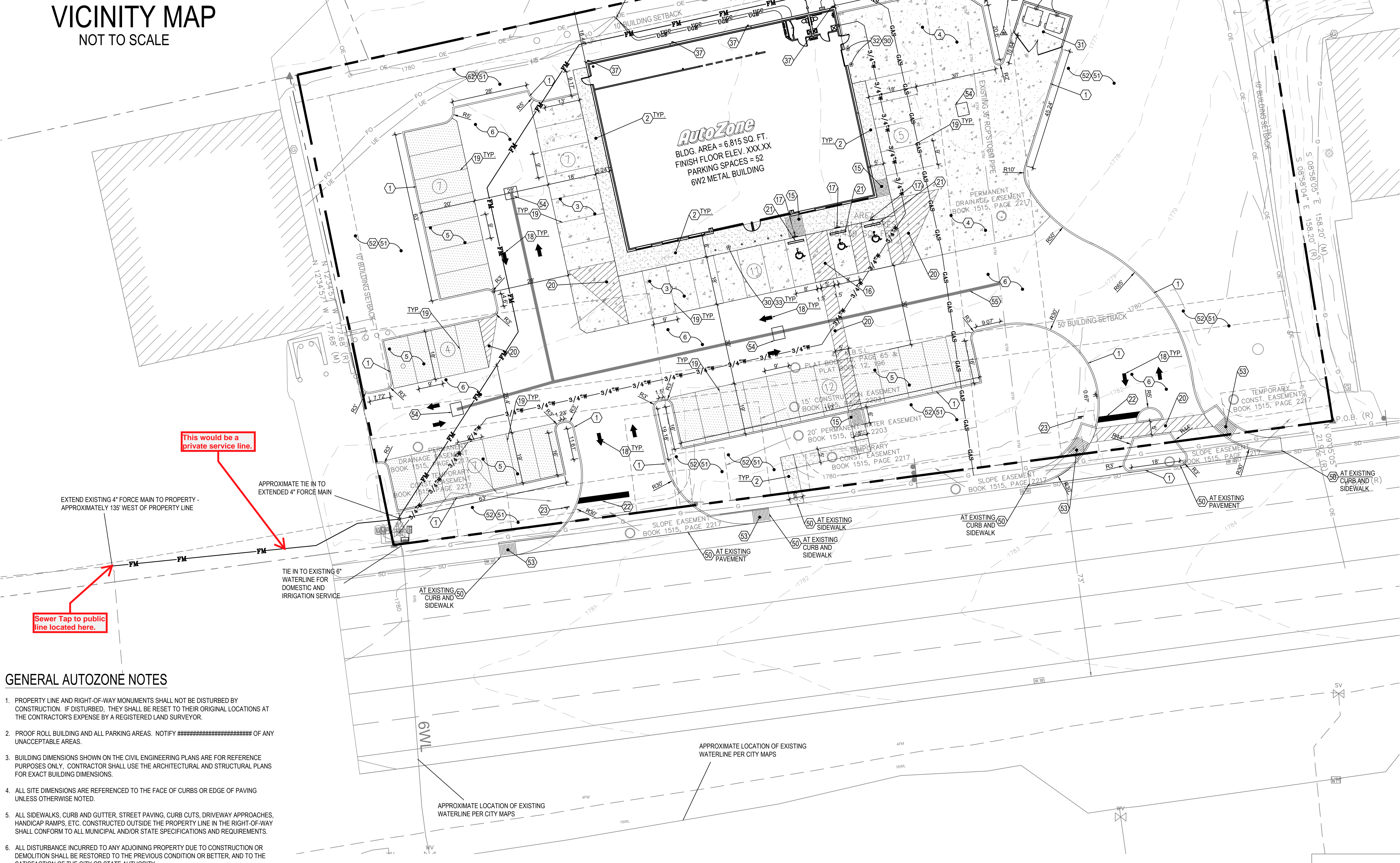


PROPOSED SITE LEGEND

- PARKING STALL COUNT
- REGULAR DUTY ASPHALT PAVING AT PARKING STALLS
- HEAVY DUTY ASPHALT PAVING
- CONCRETE SIDEWALK
- CONCRETE PAVING AT PARKING STALLS AROUND BUILDING, LOADING AREA, AND DUMPSTER
- HANDICAP PARKING
- DIRECTIONAL ARROWS
- PROPOSED CURB AND GUTTER AT CONCRETE - MONOLITHIC AT CONCRETE PAVEMENT
- LIGHT POLE

SITE KEYNOTES

- PAVEMENT AND CURBING**
- 1 CONCRETE CURB @ CONCRETE/ASPHALT PAVING - SEE DETAIL 1 & 2 / C4.0
 - 2 CONCRETE SIDEWALK - SEE DETAIL 27/C4.0 - SEE DETAIL 22/C4.0 FOR SIDEWALKS AROUND BUILDING
 - 3 REGULAR DUTY CONCRETE PAVING AT PARKING STALLS ALONG BUILDING - SEE DETAIL 4/C4.0 EXPANSION AND CONTROL JOINTS - SEE DETAIL 23 & 24 / C4.0 - MAXIMUM SPACING FOR CONTROL JOINTS PER SOILS REPORT
 - 4 HEAVY DUTY CONCRETE PAVING - SEE DETAIL 4/ C4.0. EXPANSION AND CONTROL JOINTS - SEE DETAIL 23 & 24 / C4.0 - MAXIMUM SPACING FOR CONTROL JOINTS PER SOILS REPORT
 - 5 REGULAR DUTY ASPHALT PAVING - SEE DETAIL 3/ C4.0. PROVIDE ALTERNATE CONCRETE BID - SEE DETAIL 4/ C4.0
 - 6 HEAVY DUTY ASPHALT PAVING - SEE DETAIL 3/ C4.0. PROVIDE ALTERNATE CONCRETE BID - SEE DTL. 4/ C4.0
- PAVEMENT STRIPING / ADA FEATURES / TRAFFIC SIGNAGE**
- 15 ADA ACCESSIBLE RAMP - SEE DETAIL 19/C4.0 - MAX. SLOPE 1:12 (8.33%), MAX. CROSS SLOPE 1:50 (2.00%) TRUNCATED DOME TO BE A CONTRASTING COLOR.
 - 16 ADA PARKING AREA - SEE THIS PLAN FOR DIMENSIONS - SEE DETAIL 6.7 & 12/C4.0
 - 17 ADA PARKING SIGN - SEE DETAIL 12/C4.0 - G.C. TO PROVIDE ONE VAN ACCESSIBLE SIGN.
 - 18 ONSITE PAVEMENT MARKINGS - SEE DETAIL 24 & 25/C4.0
 - 19 4" WIDE PARKING STRIPE PAINTED YELLOW (TYP.)
 - 20 4" WIDE DIAGONAL STRIPES PAINTED YELLOW AT 2 FT. O.C.
 - 21 6'-0" LONG CONCRETE WHEEL STOP PINNED TO PAVEMENT (TYP.) - LOCATE 3'-6" FROM FACE OF CURB OR SIDEWALK - SEE DETAIL 17 / C4.0
 - 22 STOP BAR PAINTED WHITE PER CITY SPECS.
 - 23 *STOP* SIGN PER CITY SPECS.
- SITE FEATURES**
- 30 PIPE GUARD - SEE DETAIL 16 / C4.0
 - 31 DUMPSTER LAYOUT - SEE DETAIL 8.9,10, & 11/ C4.0
 - 32 SERVICE DOOR PLAN - SEE DETAIL 15/ C4.0
 - 33 BOLLARD PLAN - SEE DETAIL 14/ C4.0
 - 34 LIGHT POLE - SEE PHOTOMETRIC PLAN - SEE LIGHT POLE BASE ON DETAIL SHEET C5.0
 - 35 FREEZELESS YARD HYDRANT AT BUILDING - SEE DETAIL 6 ON SHEET M2
 - 36 APPROXIMATE LOCATION FOR POLE AND POLE MOUNTED TRANSFORMER PER SERVICE PROVIDER SPECS. - COORDINATE WITH SERVICE PROVIDER PRIOR TO CONSTRUCTION
 - 37 PROVIDE DOWNSPOUT CONNECTOR AT BUILDING DOWN SPOUT - SEE ARCHITECTURAL PLANS - SEE DETAIL 21/ C4.0 - SEE GRADING PLAN FOR INVERTS
- ADDITIONAL SITE FEATURES**
- 50 TIE TO EXISTING - MATCH GRADE
 - 51 GRASS AREA - PROVIDE 6" TOPSOIL & SOD COMMON TO REGION ON ALL DISTURBED AREAS NOT TO BE PAVED
 - 52 SLOPE GRADE FROM BACK OF CURB DOWN TO MATCH THE EXISTING/PROPOSED GRADE - SEE GRADING PLAN
 - 53 ADA ACCESSIBLE RAMP PER CITY SPECS.
 - 54 AREA INLET
 - 55 PROVIDE STORM SEWER PIPE



GENERAL AUTOZONE NOTES

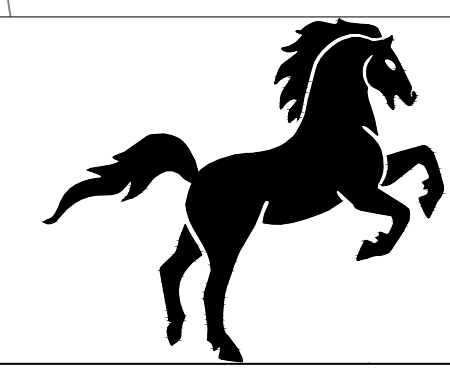
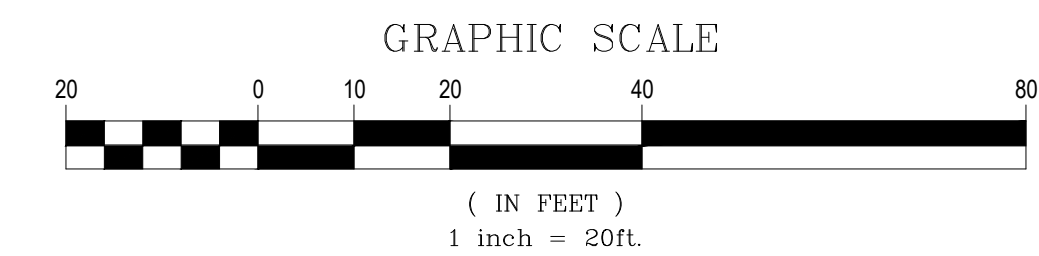
1. PROPERTY LINE AND RIGHT-OF-WAY MONUMENTS SHALL NOT BE DISTURBED BY CONSTRUCTION. IF DISTURBED, THEY SHALL BE RESET TO THEIR ORIGINAL LOCATIONS AT THE CONTRACTOR'S EXPENSE BY A REGISTERED LAND SURVEYOR.
2. PROOF ROLL BUILDING AND ALL PARKING AREAS. NOTIFY ##### OF ANY UNACCEPTABLE AREAS.
3. BUILDING DIMENSIONS SHOWN ON THE CIVIL ENGINEERING PLANS ARE FOR REFERENCE PURPOSES ONLY. CONTRACTOR SHALL USE THE ARCHITECTURAL AND STRUCTURAL PLANS FOR EXACT BUILDING DIMENSIONS.
4. ALL SITE DIMENSIONS ARE REFERENCED TO THE FACE OF CURBS OR EDGE OF PAVING UNLESS OTHERWISE NOTED.
5. ALL SIDEWALKS, CURB AND GUTTER, STREET PAVING, CURB CUTS, DRIVEWAY APPROACHES, HANDICAP RAMP, ETC. CONSTRUCTED OUTSIDE THE PROPERTY LINE IN THE RIGHT-OF-WAY SHALL CONFORM TO ALL MUNICIPAL AND/OR STATE SPECIFICATIONS AND REQUIREMENTS.
6. ALL DISTURBANCE INCURRED TO ANY ADJOINING PROPERTY DUE TO CONSTRUCTION OR DEMOLITION SHALL BE RESTORED TO THE PREVIOUS CONDITION OR BETTER, AND TO THE SATISFACTION OF THE CITY OR STATE AUTHORITY.
7. THE CONTRACTOR SHALL PROVIDE AS-BUILT RECORDS OF ALL CONSTRUCTION (INCLUDING UNDERGROUND UTILITIES) TO ##### AT THE END OF CONSTRUCTION.
8. EDGE OF NEW PAVEMENT TO BE FLUSH WITH EXISTING PAVEMENT.
9. FOR AREAS OUTSIDE THE PROPERTY LINES, REPAIR AND/OR REPLACE ALL DAMAGE DONE TO EXISTING ELEMENTS (SIDEWALKS, PAVING, LANDSCAPING, ETC.) AS REQUIRED BY OWNER AND/OR GOVERNING AUTHORITY.

ALL DISTURBED AREA SHALL BE STABILIZED WITH SOD, COMMON TO THE REGION - CONTRACTOR TO GUARANTEE AND MAINTAIN ALL NEW SODDED AREAS FOR 60 DAYS MINIMUM, AND ALL SODDED AREAS ARE STABILIZED.

PROVIDE (2) 4" PVC CONDUITS UNDER DRIVES TO ALL LANDSCAPED AREAS. PROVIDE 2' COVER AND CAP OFF. MARK STUB OUT WITH FLAGMARKER.

BM #1 TYPE: ### NORTHING: ### EASTING: ### ELEVATION: ###	BM #2 TYPE: ### NORTHING: ### EASTING: ### ELEVATION: ###
--	--

FLOOD STATEMENT:
BY GRAPHIC PLOTTING ONLY, THIS PROPERTY IS LOCATED IN ZONE "X", AREA OF MINIMAL FLOOD HAZARD, OF THE FLOOD INSURANCE RATE MAP, COMMUNITY PANEL NO. 47035C0306D, WHICH BEARS AN EFFECTIVE DATE OF NOVEMBER 16, 2007. THIS PROPERTY IS NOT IN SPECIAL FLOOD HAZARD ZONE.



CIVIL ENGINEERING SERVICES PC
FAST | RELENTLESS | VISIONARY
7705 SPICER FARM LANE, FAIRVIEW, TN 37062
615.235.5372 | Ray@CivilEngineeringServices.net



1	2	3	4	5	6
---	---	---	---	---	---

REVISIONS

AutoZone Store No. 11250
INTERSTATE DR.
CROSSVILLE TN 38555
SITE PLAN

Owner / Developer: AUTOZONE DEVELOPMENT LLC
123 South Front Street, 3rd Floor
Memphis, Tennessee 38103
TEL: (901) 495-8994 FAX: (901) 495-8969
For Bidding & Contractor Information Contact:
Dodge Data & Analytics, Tel. 413-930-4215
Cindy.searcy@construction.com

50/21/26
65W2
C1.0