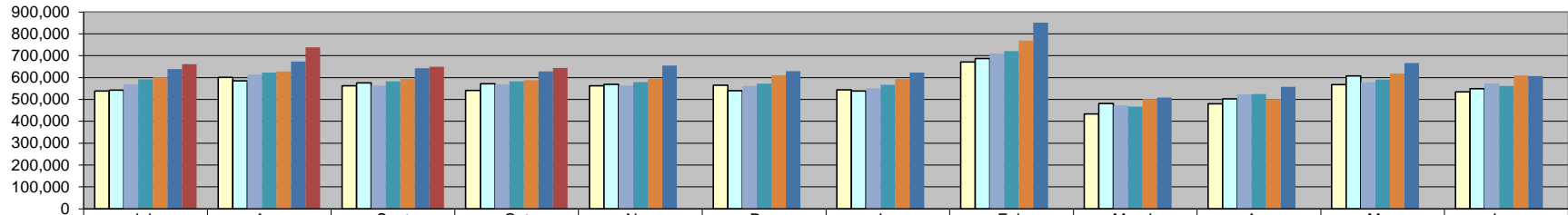
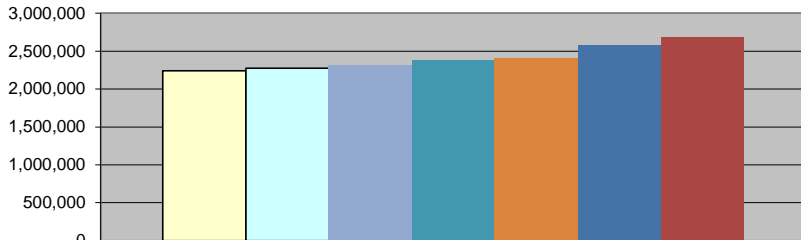


Sales Tax



	July	Aug	Sept	Oct	Nov	Dec	Jan	Feb	March	Apr	May	June
□ FY 10/11	538,673	600,275	562,593	541,360	562,799	565,057	544,297	671,239	433,357	480,426	567,763	534,779
□ FY 11/12	542,564	584,673	575,593	571,365	568,438	539,521	538,581	686,878	481,137	503,099	607,376	548,870
■ FY 12/13	568,911	613,425	563,223	567,870	563,266	562,049	550,910	710,120	472,502	523,568	579,342	574,079
■ FY 13/14	592,201	622,250	583,383	583,302	578,810	571,889	566,907	720,995	468,129	524,484	590,302	562,391
■ FY 14/15	601,996	627,721	593,548	587,893	595,353	610,479	594,131	768,882	502,422	502,612	618,980	609,073
■ FY 15/16	639,340	673,495	642,074	627,579	655,121	629,502	622,916	851,452	508,499	558,191	666,159	606,228
■ FY 16/17	661,460	738,232	648,935	643,501								

Sales Tax Revenue



	FY YTD
□ FY 10/11	2,242,901
□ FY 11/12	2,274,196
■ FY 12/13	2,313,429
■ FY 13/14	2,381,137
■ FY 14/15	2,411,158
■ FY 15/16	2,582,487
■ FY 16/17	2,692,127

***COLLECTIONS IN THE CITY OF CROSSVILLE**

State of TN Cost of Administration 1.125% \$1,314,792.86
 Net Collections (sent to trustee's office) \$14,791.42
 \$1,300,001.44

Trustee of Cumberland County 1% \$13,000.01
 Net To Be Distributed \$1,287,001.43

CITY OF CROSSVILLE SPLIT

Check to City of Crossville \$643,500.71
 Check to Cumberland County Board of Education \$643,500.71

*Totals reported in October, but actually collected in August