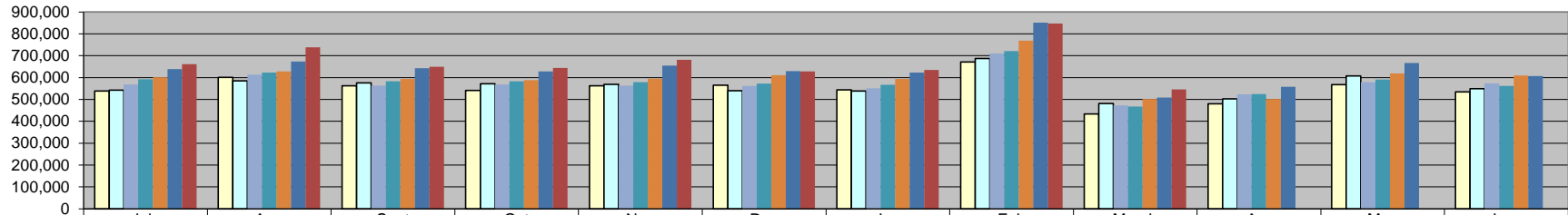
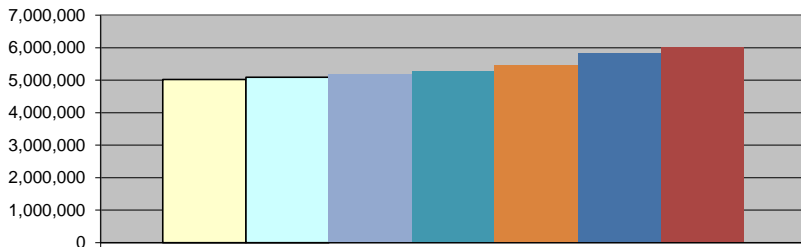


**Sales Tax**



	July	Aug	Sept	Oct	Nov	Dec	Jan	Feb	March	Apr	May	June
□ FY 10/11	538,673	600,275	562,593	541,360	562,799	565,057	544,297	671,239	433,357	480,426	567,763	534,779
□ FY 11/12	542,564	584,673	575,593	571,365	568,438	539,521	538,581	686,878	481,137	503,099	607,376	548,870
■ FY 12/13	568,911	613,425	563,223	567,870	563,266	562,049	550,910	710,120	472,502	523,568	579,342	574,079
■ FY 13/14	592,201	622,250	583,383	583,302	578,810	571,889	566,907	720,995	468,129	524,484	590,302	562,391
■ FY 14/15	601,996	627,721	593,548	587,893	595,353	610,479	594,131	768,882	502,422	502,612	618,980	609,073
■ FY 15/16	639,340	673,495	642,074	627,579	655,121	629,502	622,916	851,452	508,499	558,191	666,159	606,228
■ FY 16/17	661,460	738,232	648,935	643,501	680,608	627,480	634,569	846,643	545,448			

**Sales Tax Revenue**



	FY YTD
□ FY 10/11	5,019,650
□ FY 11/12	5,088,751
■ FY 12/13	5,172,277
■ FY 13/14	5,287,867
■ FY 14/15	5,482,426
■ FY 15/16	5,849,978
■ FY 16/17	6,026,876

**\*COLLECTIONS IN THE CITY OF CROSSVILLE**

State of TN Cost of Administration 1.125% \$1,114,453.65  
 Net Collections (sent to trustee's office) \$1,101,916.05

Trustee of Cumberland County 1% \$11,019.16  
 Net To Be Distributed \$1,090,896.89

**CITY OF CROSSVILLE SPLIT**  
 Check to City of Crossville \$545,448.45  
 Check to Cumberland County Board of Education \$545,448.44

\*Totals reported in March, but actually collected in January