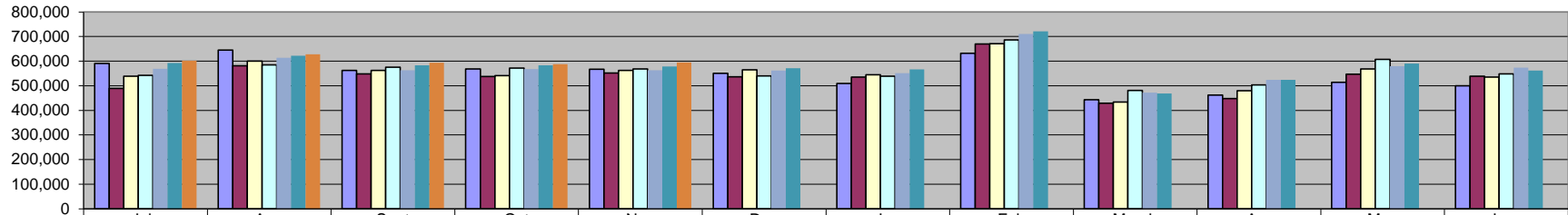
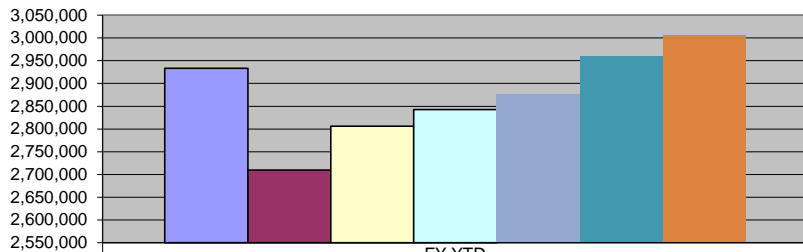


Sales Tax



	July	Aug	Sept	Oct	Nov	Dec	Jan	Feb	March	Apr	May	June
FY 08/09	591,118	644,757	562,221	568,181	567,469	551,163	509,440	632,057	443,797	461,586	513,995	500,202
FY 09/10	488,728	581,783	548,598	538,171	552,339	536,537	535,383	669,430	429,062	447,590	547,557	539,256
FY 10/11	538,673	600,275	562,593	541,360	562,799	565,057	544,297	671,239	433,357	480,426	567,763	534,779
FY 11/12	542,564	584,673	575,593	571,365	568,438	539,521	538,581	686,878	481,137	503,099	607,376	548,870
FY 12/13	568,911	613,425	563,223	567,870	563,266	562,049	550,910	710,120	472,502	523,568	579,342	574,079
FY 13/14	592,201	622,250	583,383	583,302	578,810	571,889	566,907	720,995	468,129	524,484	590,302	562,391
FY 14/15	601,996	627,721	593,548	587,893	595,353							

Sales Tax Revenue



	FY YTD
FY 08/09	2,933,746
FY 09/10	2,709,619
FY 10/11	2,805,699
FY 11/12	2,842,633
FY 12/13	2,876,695
FY 13/14	2,959,947
FY 14/15	3,006,511

*COLLECTIONS IN THE CITY OF CROSSVILLE

State of TN Cost of Administration 1.125% \$1,216,418.89
 Net Collections (sent to trustee's office) \$13,684.71
 \$1,202,734.18

Trustee of Cumberland County 1% \$12,027.34
 Net To Be Distributed \$1,190,706.84

CITY OF CROSSVILLE SPLIT

Check to City of Crossville \$595,353.42
 Check to Cumberland County Board of Education \$595,353.42

*Totals reported in November, but actually collected in September