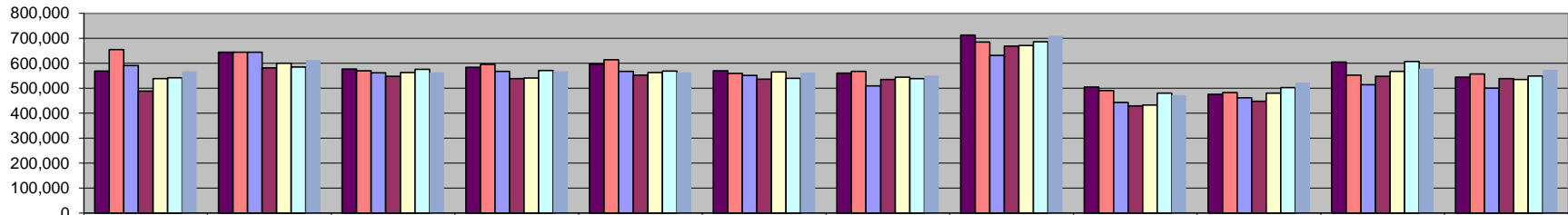
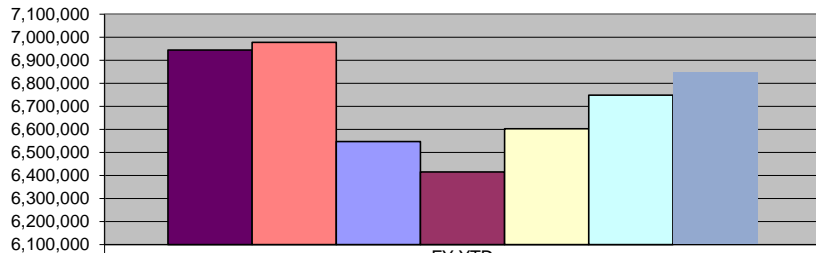


Sales Tax



	July	Aug	Sept	Oct	Nov	Dec	Jan	Feb	March	Apr	May	June
■ FY 06/07	568,739	644,773	576,686	583,998	596,589	569,560	560,598	713,160	504,723	476,318	604,879	544,035
■ FY 07/08	654,645	644,912	570,078	595,223	614,857	559,519	567,762	685,134	491,196	482,367	553,238	557,801
■ FY 08/09	591,118	644,757	562,221	568,181	567,469	551,163	509,440	632,057	443,797	461,586	513,995	500,202
■ FY 09/10	488,728	581,783	548,598	538,171	552,339	536,537	535,383	669,430	429,062	447,590	547,557	539,256
■ FY 10/11	538,673	600,275	562,593	541,360	562,799	565,057	544,297	671,239	433,357	480,426	567,763	534,779
■ FY 11/12	542,564	584,673	575,593	571,365	568,438	539,521	538,581	686,878	481,137	503,099	607,376	548,870
■ FY 12/13	568,911	613,425	563,223	567,870	563,266	562,049	550,910	710,120	472,502	523,568	579,342	574,079

Sales Tax Revenue



	FY YTD
■ FY 06/07	6,944,058
■ FY 07/08	6,976,732
■ FY 08/09	6,545,987
■ FY 09/10	6,414,433
■ FY 10/11	6,602,617
■ FY 11/12	6,748,096
■ FY 12/13	6,849,266

*COLLECTIONS IN THE CITY OF CROSSVILLE		\$1,172,951.47
State of TN Cost of Administration	1.125%	\$13,195.70
Net Collections (sent to trustee's office)		\$1,159,755.77
Trustee of Cumberland County	1%	\$11,597.56
Net To Be Distributed		\$1,148,158.21
CITY OF CROSSVILLE SPLIT		
Check to City of Crossville		\$574,079.11
Check to Cumberland County Board of Education		\$574,079.11
		\$1,148,158.21

*Totals reported in June, but actually collected in April