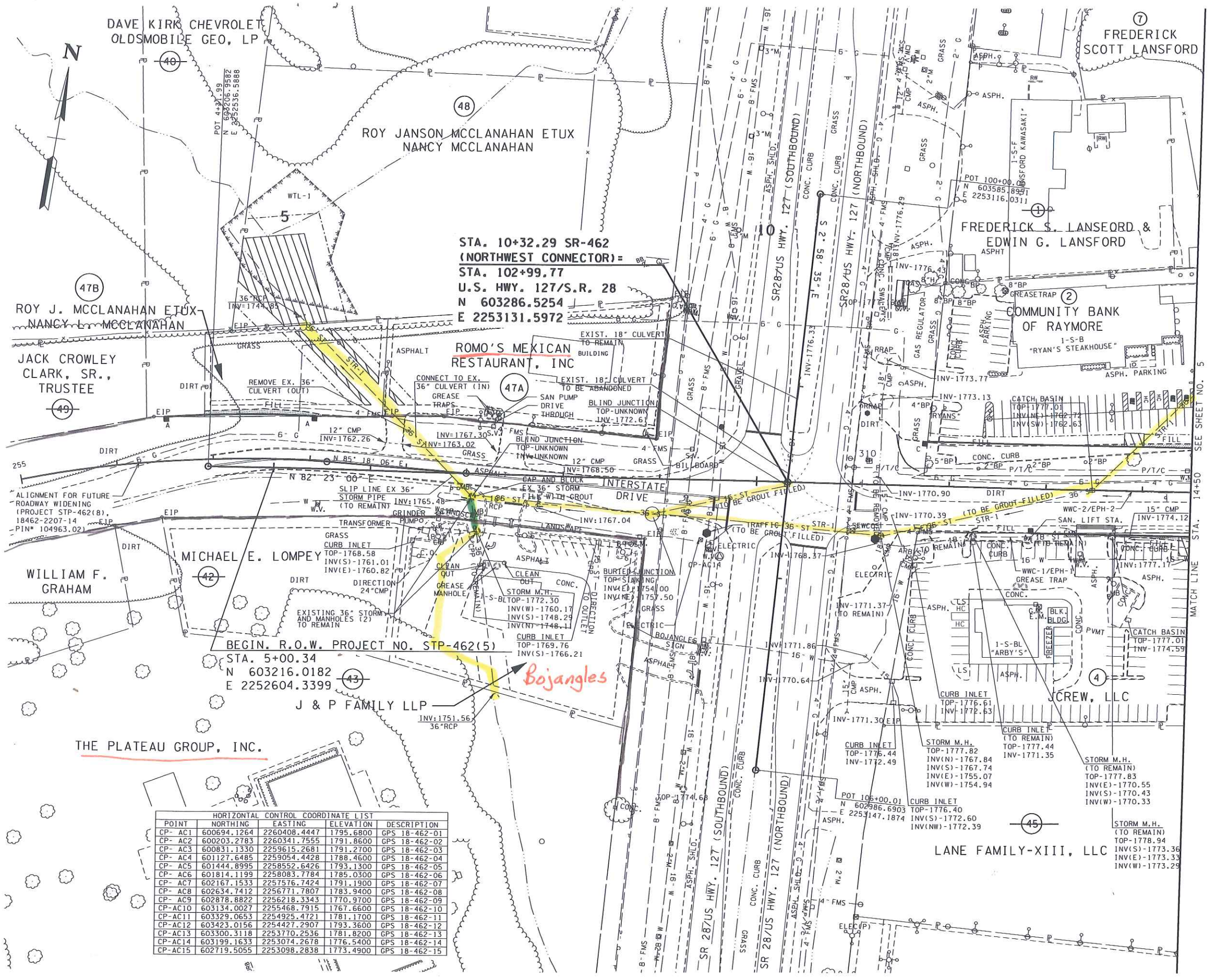


TYPE	YEAR	PROJECT NO.	SHEET NO.
R.O.W.	2012	STP-462(5)	4

REV. 07-01-13:  
REVISED PERM. DRAINAGE EASEMENT TRACT NO. 48. ADDED CONST. EASEMENT TRACT NO. 48. ADDED CONTROL POINTS TABLE.

REV. 10-20-17:  
REVISED PROPERTY LINES FOR TRACT 40 AND 48.  
ADDED TRACT 47B AND ELIMINATED TRACT 49. ADDED/REVISED PERM. DRAINAGE AND CONST. EASEMENTS ON TRACT NOS. 47A, 47B AND 48. ADDED SLOPE EASEMENTS ON TRACT NOS. 47A AND 47B.  
ADDED PROP ROW ON TRACT NO. 47B.  
UPDATED PROPERTY OWNERS ON TRACT NOS. 2, 4, 47A, AND 48.  
ADDED WETLAND NO. 1.



STA. 10+32.29 SR-462  
(NORTHWEST CONNECTOR)=  
STA. 102+99.77  
U.S. HWY. 127/S.R. 28  
N 603286.5254  
E 2253131.5972

BEGIN. R.O.W. PROJECT NO. STP-462(5)  
STA. 5+00.34  
N 603216.0182  
E 2252604.3399

POINT	NORTHING	EASTING	ELEVATION	DESCRIPTION
CP-AC1	600694.1264	2260408.4447	1795.6800	GPS 18-462-01
CP-AC2	600203.2783	2260341.7555	1791.8600	GPS 18-462-02
CP-AC3	600831.1330	2259615.2681	1791.2700	GPS 18-462-03
CP-AC4	601127.6485	2259054.4428	1788.4600	GPS 18-462-04
CP-AC5	601444.8995	2258552.6426	1793.1300	GPS 18-462-05
CP-AC6	601814.1199	2258083.7784	1785.0300	GPS 18-462-06
CP-AC7	602167.1533	2257576.7424	1791.1900	GPS 18-462-07
CP-AC8	602634.7412	2256771.7807	1783.9400	GPS 18-462-08
CP-AC9	602878.8822	2256218.3343	1770.9700	GPS 18-462-09
CP-AC10	603134.0027	2255468.7915	1767.6600	GPS 18-462-10
CP-AC11	603329.0653	2254925.4721	1781.1700	GPS 18-462-11
CP-AC12	603423.0156	2254427.2907	1793.3600	GPS 18-462-12
CP-AC13	603300.3118	2253770.2536	1781.8200	GPS 18-462-13
CP-AC14	603199.1633	2253074.2678	1776.5400	GPS 18-462-14
CP-AC15	602719.5055	2253098.2838	1773.4900	GPS 18-462-15

FOR  
R.O.W.  
ONLY

COORDINATES ARE NAD(83)1995,  
ARE DATUM ADJUSTED BY THE  
FACTOR OF 1.000 AND TIED TO  
THE TGRN. ALL ELEVATIONS ARE  
REFERENCED TO THE NAVD 1988.

STATE OF TENNESSEE  
DEPARTMENT OF TRANSPORTATION

PRESENT  
LAYOUT

B.O.P. TO STA. 14+50

SCALE: 1" = 50'