

# PARKS & RECREATION MASTER PLAN

-2023-



## **Acknowledgments:**

# **Table of Contents:**

- ❖ Acknowledgments
- ❖ Table of Contents

## **Sections**

- 1** Introduction
- 2** Map of Population
- 3** Maps of Basic Demographics, Age/Household Income
- 4** Existing Facilities Map
- 5** Amenities in Parks
- 6** Existing Programs – City & County, Funding
- 7** User Survey Results
- 8** SWOT Analysis
- 9** Public Input Intro
- 10** Focus Group
- 11** Crossville Rotary
- 12** Fairfield Glade Rotary
- 13** Public Hearing
- 14** Needs Assessment
- 15** Intro to Individual Parks
- 16** Cumberland Co Trails
- 17** Obed River Park
- 18** East Cumberland Community Park
- 19** Centennial Park
- 20** Garrison Park
- 21** Duer Soccer Complex
- 22** Meadow Lake Park
- 23** Conclusion

## Introduction

### Cumberland County, Tennessee

Cumberland County, Tennessee, is located in the Upper Cumberland region of middle Tennessee. The 685-square-mile county is located approximately 120 miles east of Nashville, 80 miles north of Chattanooga, and 75 miles west of Knoxville. Cumberland County is made up of various municipalities and unincorporated small communities. The County Seat of Crossville, a micropolitan statistical area, is located in the middle of the county, making it easy for all residents to access the many amenities this rapidly-growing city has to offer.

Cumberland County was formed in 1856 from parts of Bledsoe, Roane, Morgan, Fentress, Rhea, Putnam, Overton, and White Counties. It is Tennessee's fourth largest county by area and is home to many karst formations. Most well-known is Grassy Cove, a large depression located in southeast Cumberland County. Grassy Cove is five miles long, three miles wide, and over 1,000 feet deep. Cumberland County is also home to the Tennessee Divide, where the watersheds of the Tennessee and Cumberland Rivers meet.

This plan will align with the National Recreational and Parks Association working definition of equitable park and recreation access – “The just and fair quantity, proximity and connections to quality parks and green space, recreation facilities, as well as programs that are safe, inclusive, culturally relevant and welcoming to everyone. When people have just and fair access, our health and social wellbeing improve, and our communities can protect and better recover from environmental, social and economic challenges.” ([www.nrpa.org](http://www.nrpa.org))

Cumberland County's Master Parks and Recreational Plan has followed the steps laid out on the National Recreational and Parks Association's website. The initial internal assessment was conducted. The county worked with a cross-section of the community to ensure all residents had a voice in what they wanted to see accomplished in Cumberland County. Next, the county conducted data collection and analysis ranking the needs and wants of the residents.

Tennessee is heralded as a tourist destination for its natural beauty. This plan will show how Cumberland County plans to enhance the current natural and man-made recreational areas to draw visitors to the county and enhance the lives of current residents. Cumberland County has many local and state parks, as well as a diverse natural landscape, offering activities for all ages and abilities. This plan will lay out the county's current conditions at their six main parks – Obed River Park, East Cumberland Community Park, Centennial Park, Garrison Park, Duer Soccer Complex, and Meadow Lake Park – as well as how the county can best use these resources to shape the recreational needs going forward. In addition to the park system, this plan will address the many trails throughout Cumberland County as well as ballparks/fields and farmers' markets.

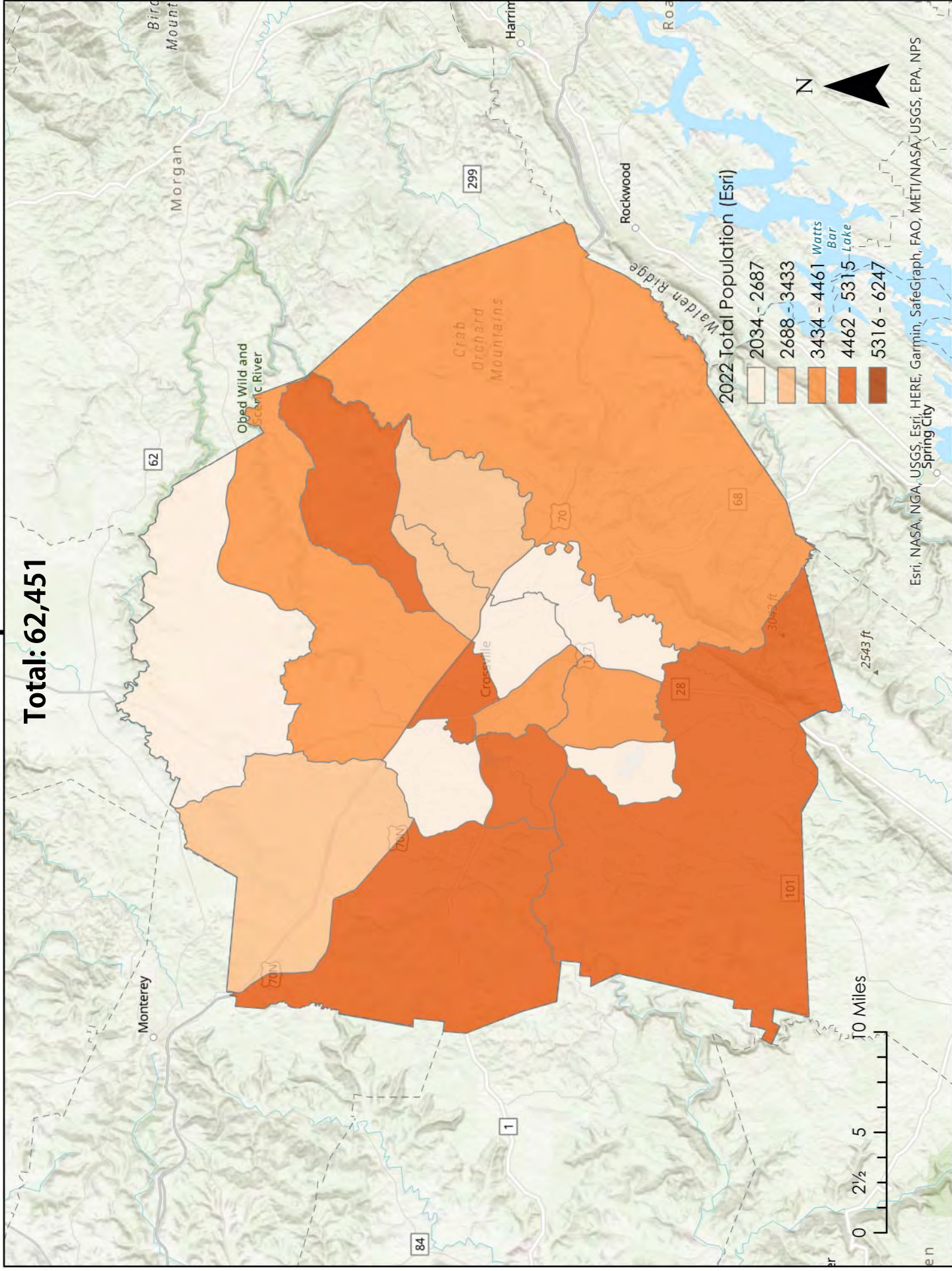
The State of Tennessee has communicated to its cities and counties to work to utilize the natural, cultural, and historical resources to improve their overall quality of life within their municipalities. In keeping with this order, this Cumberland County Master Parks and Recreation Plan addresses the development and implementation of strategies to improve access to recreation and public land use to facilitate physical activity.



In creating this master plan, multiple stakeholder meetings were held. During these meetings, the committee compiled an inventory of current parks and their condition. The committee then composed a list of short, mid, and long-term goals they hoped to accomplish over the next 5 plus years.

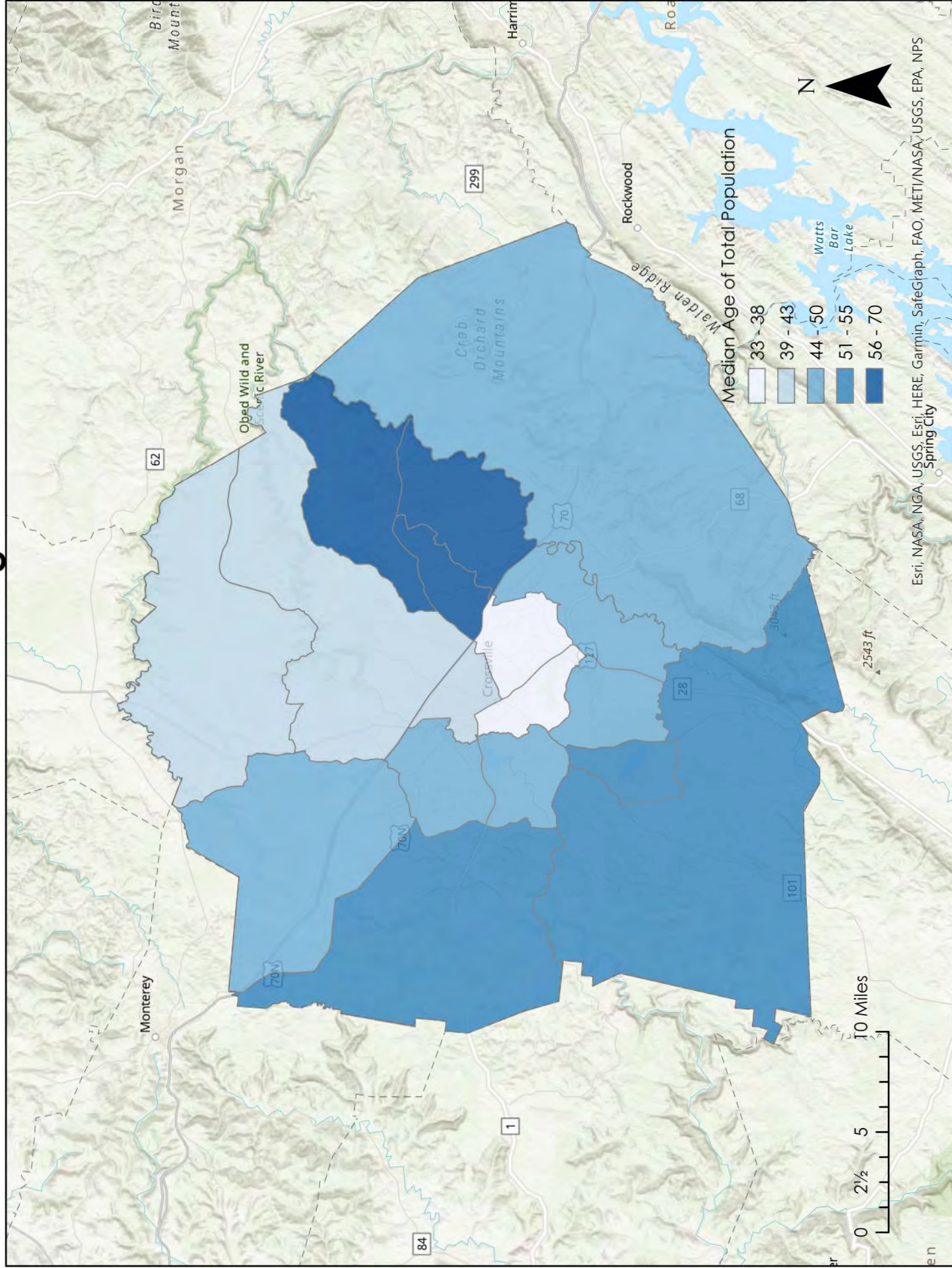
## 2022 Population

Total: 62,451



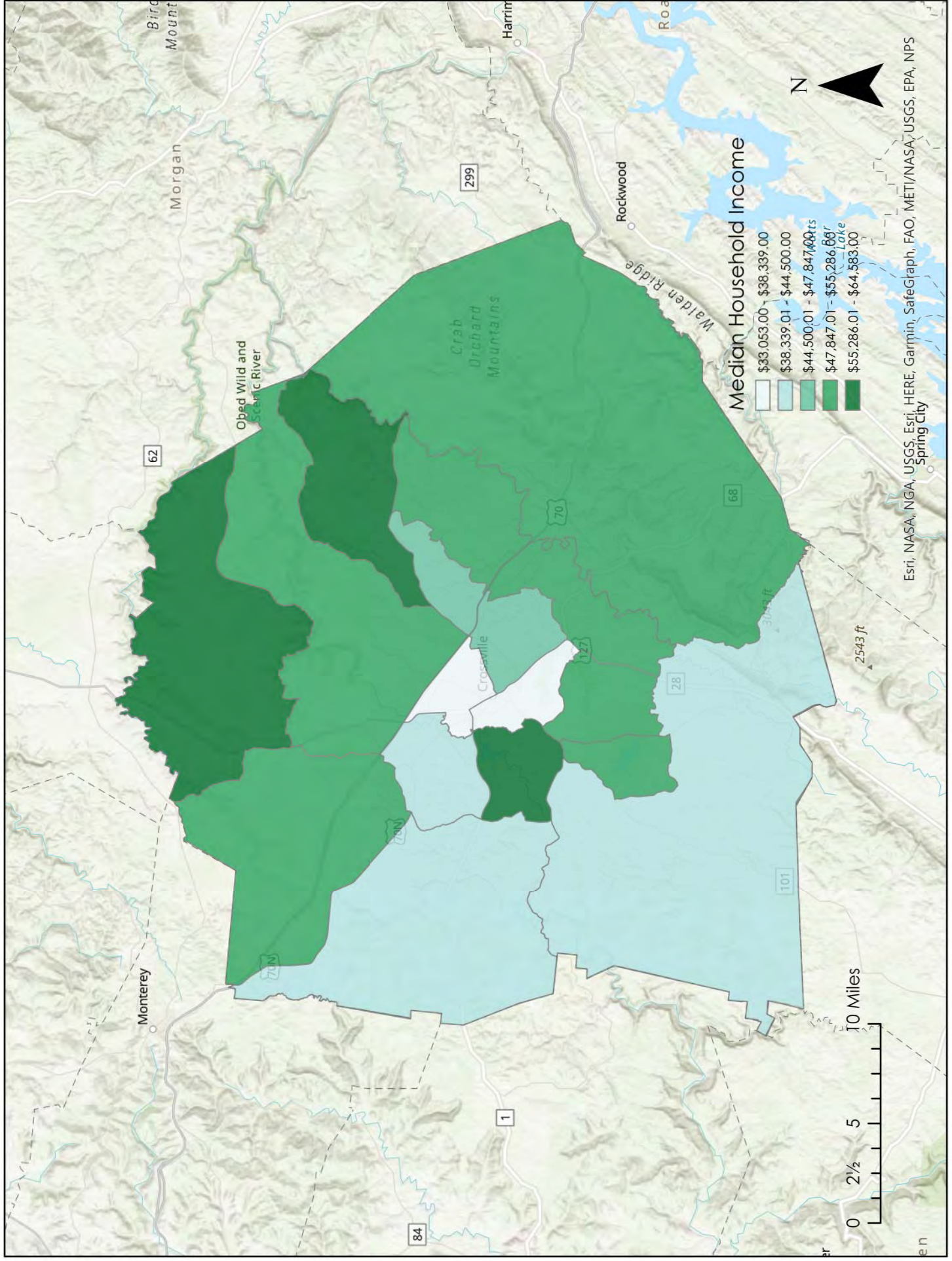


# Median Age



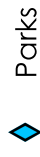


# Median household income



Dr. Carl T.  
Duer, Sr.  
Soccer Complex  
Obed Centennial  
River Park  
Park  
Garrison Park  
Meadow  
Park Lake

East Cumberland  
Community Park



Parks

Cities



Cumberland County



Sources: Esri, HERE, Garmin, Intermap, increment P Corp., GEBCO, USGS, FAO, NPS, NRCAN, GeoBase, IGN, Kadaster NL, Ordnance Survey, Esri Japan, METI, Esri China (Hong Kong), (c) OpenStreetMap contributors, and the GIS User Community



# 5

## Amenities in Parks:

### Obed River Park-

- Outdoor Workout Machines
- Playground Equipment
- Covered Picnic Areas
- Restroom
- Paved Parking Lot
- 1.5 mile paved walking trail
- Outdoor Classroom
- Trailhead for 2.8 mi wooded hiking trail (Plantation Trail)

### East Cumberland Community Park-

- Quarter-mile paved walking trail with lighting
- Playground equipment
- Picnic area
- Gazebo with a seating area

### Centennial Park-

- 4 lighted adult softball fields
- 3 lighted youth softball/baseball fields
- 1 lighted regulation baseball field
- 2 lighted tee ball/coach pitch fields
- Concessions/fieldhouse facilities
- 2 lighted sand volleyball courts
- 4 lighted basketball ½ courts
- 8 individual pickle ball courts
- Skate Park
- Horseshoe Pavilion w/12 clay pits
- 2 lighted picnic shelters
- dog park with separate one-acre areas for both large and small dogs
- Child's play area with sand boxes
- Fully accessible playground
- 2 large parking lots

### Garrison Park-

- Playground
- Splash pad
- Small covered picnic area with restrooms
- Recently resurfaced basketball court

### Duer Soccer Complex-

- 7 playing fields - lighted
- Field house with concessions and restrooms
- 2 small covered shelters
- Large parking area with bioswales

### Meadow Park Lake-

- Marina and boat slips
- Boat ramps to lake access
- Boat, kayak, and canoe rental
- 1.9 mile loop trail
- Primitive camping grounds
- RV Sites with water hookups
- Playground
- Pavilions
- Disc golf course

## 6 Existing Programs, Funding:

### County

#### Obed River Park-

- 5k runs
- Outdoor Classroom that will host various programs (starts next Spring)

#### East Cumberland Community Park-

- Political & Fundraising activities

#### Budget-

\$280,760

### City

#### Centennial Park-

- Baseball/softball events
- Horseshoe tournaments
- Fireworks events
- Concerts
- Summer food service program
- Cornhole tournaments
- Easter Events

#### Duer Soccer Complex-

- Crossville Recreational Youth Soccer Association

#### Garrison Park-

- No existing programs-At least 1 movie in the park in the spring/summer of '23

#### Meadow Park Lake-

- Friday night Bass tournaments (May-Sept.)
- Sunset Kayak Tours (seasonal)
- Disc Golf Tournaments (Golf Capital Open in May, Crossroads Classic in October)
- Kids Fishing Derby (June)
- At least 1 movie in the park in the spring/summer of '23

#### Budget-

\$955,225 (Overall Parks & Rec)

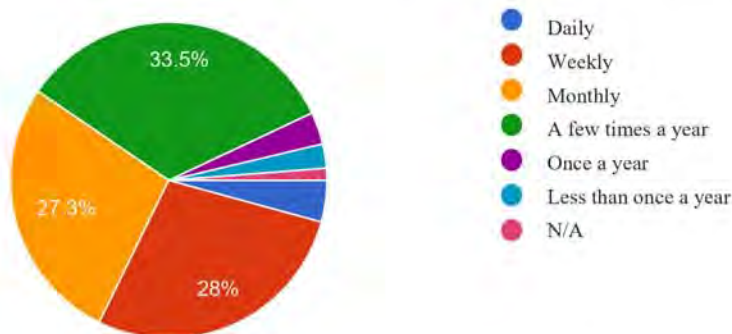
\$226,251 (Meadow Park Lake)

## Cumberland County Parks and Recreation Survey: (Total Responses- 730)

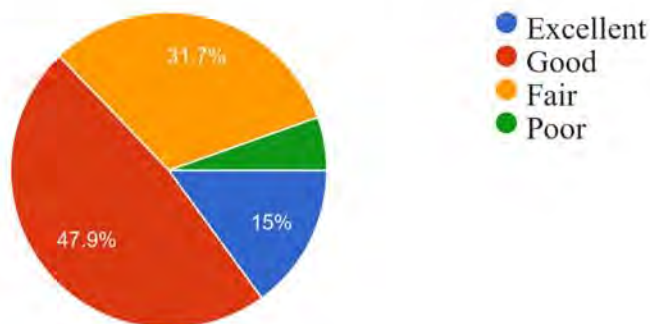
Q1 Have you or a family member visited a park in Cumberland County? (727 responses)



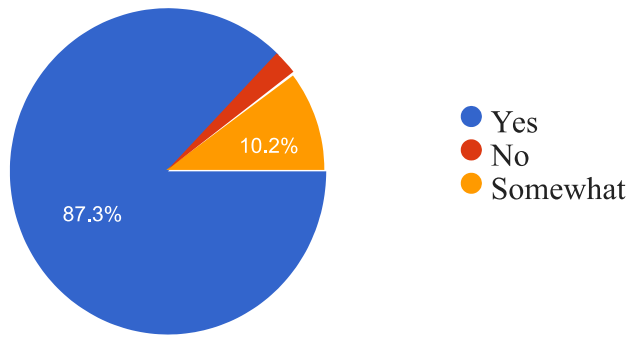
Q2 If you have visited a park in Cumberland County, how often do you visit? (729 responses)



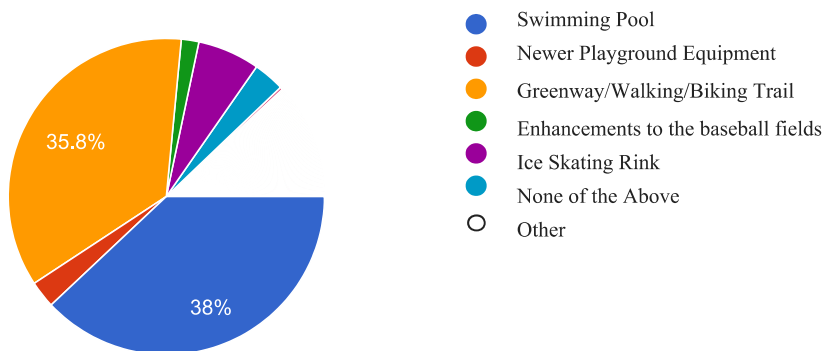
Q3 If you have played on a field/court in Cumberland County, how would you describe the playing conditions? (514 responses)



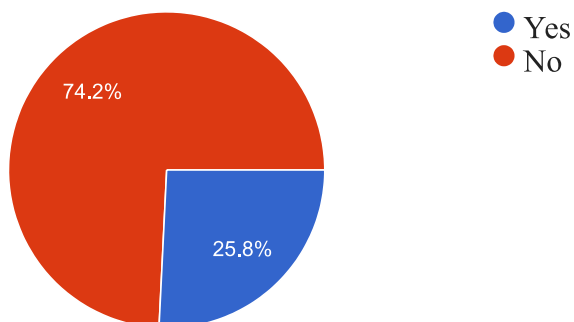
Q4 Do you believe open spaces and recreational opportunities provided by Cumberland County are important to your quality of life? (726 responses)



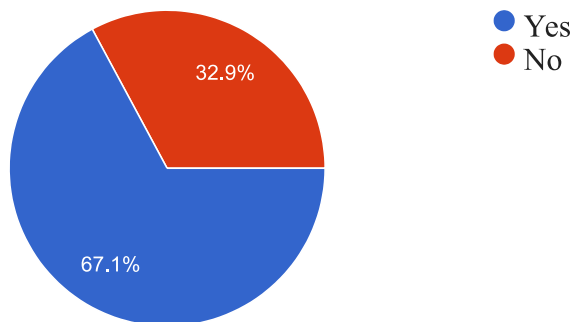
Q5 What do you feel would improve your quality of life more? (724 responses)



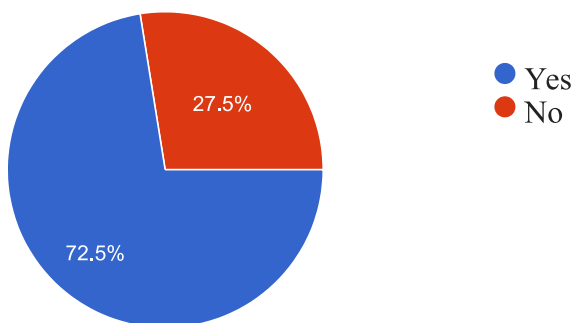
Q6 Does anyone in your family skateboard, roller blade, or roller skate? (722 responses)



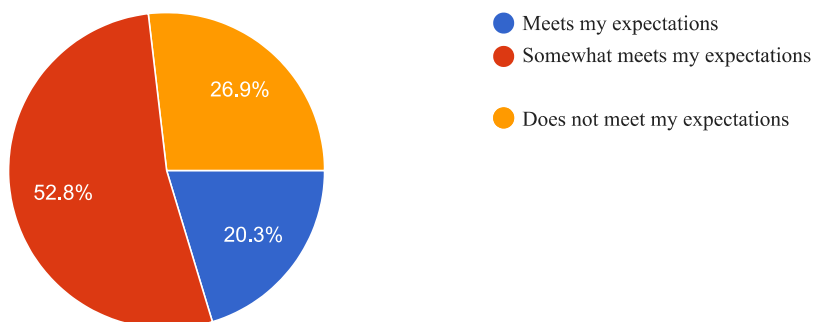
Q7 Do you think a designated area for skating would benefit Cumberland County? (691 responses)



Q8 Have you visited either of the Farmer's Market? (726 responses)

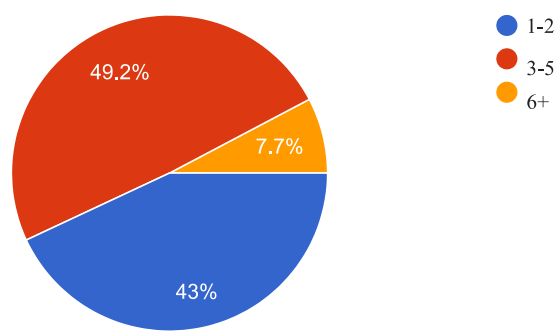


Q9 If you have visited either Farmer's Markets, how adequately does it meet what you feel like a Farmer's Market should be? (566 responses)

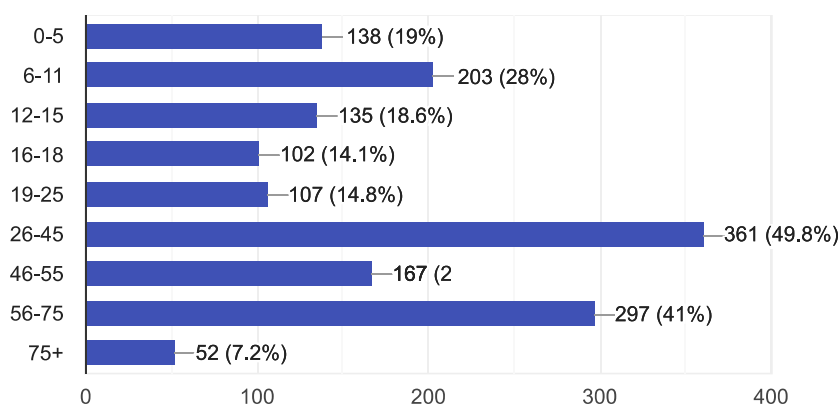




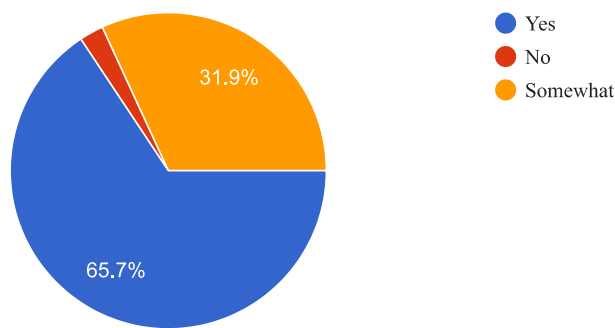
Q10 How many people live in your household? (725 responses)



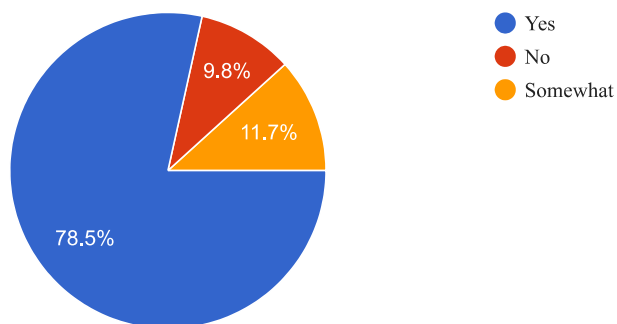
Q11 What are the ages of people in your household? (Select all that apply)(725 responses)



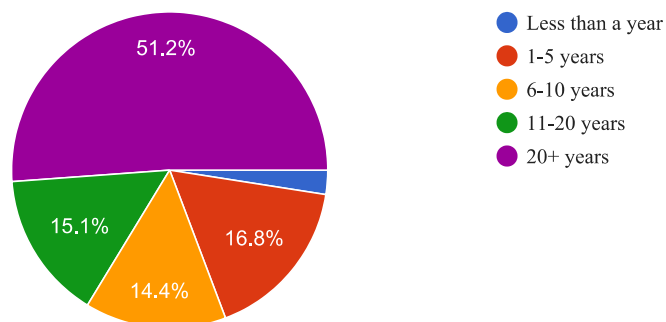
Q12 Do you consider yourself to be an active person? (728 responses)



Q13 Does the idea of a designated walking/biking trail or greenway interest you? (725 responses)



Q14 How long have you lived in Cumberland County? (727 responses)



# 8

## Cumberland County Parks SWOT Analysis

### Strengths

- ❖ Trails & Marathon
- ❖ Golf capital/ 9 courses
- ❖ Existing Parks (CMSP, county, city)
- ❖ Splash pad
- ❖ Camping
- ❖ Sports (soccer, softball, etc)
- ❖ Natural beauty/ location/ destination
- ❖ Programs (J4K, CRYSA)
- ❖ Lakes/ creeks
- ❖ Disc Golf Course
- ❖ Explore Crossville
- ❖ Amp/ Downtown
- ❖ Fishing/ hunting
- ❖ Black Mountain
  - Rock climbing
  - Repelling
- ❖ Ozone Falls
- ❖ Shooting park
- ❖ Mountain biking at Cumberland Mountain State Park
- ❖ Greenways

### Weaknesses

- ❖ Lack of indoor recreational Center (x2)
- ❖ Indoor pool/ multi-use basketball court/ etc.
- ❖ Public pools
- ❖ Access to waterways (kayaking)
- ❖ Lack of broadband
- ❖ Weak farmers' market
- ❖ Playground equipment at Obed Park (not ADA; need more and newer equipment)
- ❖ Lack of appeal to younger & less affluent demographics
- ❖ Trailhead parking
- ❖ Ability to market soccer
- ❖ Access to certain lakes
- ❖ Disc golf course access
- ❖ Meadow Park access
- ❖ Lack of marketing the events at the parks
- ❖ Signage on main roads for Obed River Park and Meadow Park

### Opportunities

- ❖ Better utilization of Obed River/ Creeks
- ❖ More indoor facilities could lead to opportunities for schools (ex: indoor pool could lead to Stone/ CCHS swim teams)
- ❖ Farmers' Market—update/ “spruce up”
- ❖ Kayak?
- ❖ Wild & Scenic River (Obed)/ Rapids
- ❖ Marketing/ cross promos (soccer)
- ❖ Signature Park
- ❖ Meadow Park Expansion
- ❖ Outdoor swimming

### Threats

- ❖ Smokey Mountains
- ❖ Naysayers
- ❖ Willingness to fund
- ❖ Competition from other counties
- ❖ Trailhead parking
- ❖ People leaving county for pools
- ❖ Roads leading to parks

## 9 Public Input



### **Introduction:**

Public input is a critical component in developing a comprehensive plan for a parks and recreation department. The citizens are the end-users of the parks system and recreation programs. Without strong support and avid usage, the parks system becomes ineffective. For the plan to be effective in improving service delivery and facilities, it must accurately reflect the facilities and programs most desired by the citizens of the community. The recommendations made in this master plan were driven by public input gathered through a variety of methods, including input from public meetings, focus group sessions and an online survey sent to the residents of Crossville.

A **focus group meeting** was held on January 20, 2022.

## Long Term Goals (5+ years)

- Completion of pool project/recreation center
- Pending interest adding softball/baseball fields out in the county
- Completion of paving for greenway trails
- Entrance to Obed River Park from Highway 127
- Upgrades to Farmers Market
- Wifi access at all parks
- Increase number of pickleball courts
- Acquiring more land for City/County green open spaces
- Increase access to waterways
- Increase playground equipment at all parks
- Completion of network for biking and walking trails for Cumberland County
- Develop assets related to motor sports including ATV trails
- Ice skating rink (seasonal)

## Mid Term Goals (2-5 years)

- Funding of pool project/recreation center
- Survey of public opinion on adding softball/baseball fields out in the county
- Building Livingston Rd bike trail
- Off road bike trails at Meadow Park
- Adding a disc golf course
- Multipurpose meeting space at the Community Complex/Obed River Park
- Upgrade to bathroom at the Community Complex/Obed River Park
- Priority list for public lands for acquisition



### Short Term Goals (0-2 years)

- Creating ADA access to the trailhead at Obed River Park
- Playground equipment at Obed River Park (replacing equipment)
- County to take over the Plantation Trail and pave it
- Design of pool project/recreation center
- Signage on main roads for Obed River Park/Community Complex and Meadow Park
- Increased marketing of the events at all County parks
- Design and construction of roof for the arena at fairgrounds/Obed River Park
- Facility use plan/study for the Community Complex and Obed River Park
- Pavilion at splash pad at Garrison Park
- Design of Livingston Rd bike trail
- Bike lane on 127 to Cumberland Mountain State Park
- Paving at Farmers Market
- Access to waterway access points of Obed River and Daddy's Creek

\*Reference Flat Rock Motor Sports Park

\*Big parks/trails Top 10 List

A meeting was held at the **Crossville Noon Rotary**

**Club.** The floor was opened for public comment.

The following is a list of items that were proposed:

- More bike paths from residential areas to areas of commerce.
- Bike lanes are fine but they would prefer some type of partition.
- Greenway that connects areas of high traffic
- Walking trails from Obed River to Cumberland County Community Complex to Main Street area
- Community swimming pool (indoor or outdoor)
- Disc golf courses
- Shady areas around the splash pad
- Multi use green open spaces
- Rails to Trails
- Update to Obed River Park playground equipment
- More off-road bike trails
- Additional pickle ball courts that potentially convert to tennis courts
- Outdoor ice-skating rink
- Additional hiking trails

The **Fairfield Glade Noon Rotary Club** met at 12:00 p.m. on May 3<sup>rd</sup> 2021. The meeting was then opened to public comment and input from Rotarians in attendance.

- Concentration on neighborhood parks could be beneficial to the plan by reducing travel nearby residents.
- How Far along is the project?
  - It will soon go to commission.
- What level of zoning will be instated?
  - There is currently none in Crossville.
- What about public swimming pools?
  - An indoor aquatic facility has been recognized as a need.
- Do you cover the county fairgrounds?
  - It is included and refurbishing buildings is listed in the plan.
- Have you ever worked with the Cumberland County Sports Council regarding events?
  - They are involved with input and planning.
- If the parks are expanded it will benefit all members of the community.
- Will the schools be involved with competitive swimming if a facility is installed?
  - The center is a priority and the opportunity will be available to schools depending on interest and actions taken by the school board.
- In Fairfield Glade there is interest in outdoor concerts. An outdoor amphitheater would be beneficial to the community.
- Has a disc golf course been considered?
  - The need for expanded facilities has been discussed.
- An indoor pickle ball court would benefit the community.
- A baseball field to attract competitions.
- Splash Pad expansion to other parks.
- The soccer field is heavily used and more could be added.
- Botanical gardens comparable to Murfreesboro's.
- Would there be a plan to provide public transportation to allow youth to participate in the parks?
  - It will be emphasized in the plan.
- Do you oversee hiking trails?
  - John Conrad has provided input for the plan. Horse trails included.
- Small parks spread out through the community would be beneficial. Emphasis on location in highly concentrated areas.

## Public Hearing Notes

**Sue York County Commissioner District 1:** Stated she would like to improve the Fairgrounds/Community Complex. She specifically pointed out the need for a multi-purpose building on the fair property.

**Wendell Wilson:** Voiced a desire to add bike lanes. He also stated a considerable demand for additional softball and baseball fields.

**Rebecca Stone:** Voiced a need for bike lanes to be added from the state park to town (around bridges). She also pointed out that City/County owned natural areas should be preserved.

**Joe Sherrill:** Recommended connecting all of the parks via trails. He also pointed out the City and County needed additional ball structures to accommodate the need. He also voiced his desire to see a bike trail that runs along the railroad out to Crab Orchard.

**Brock Hill:** Voiced a need for additional bike trails. He would like to link Centennial Park and Obed Park with a paved bike trail. He expanded to say there was a need for bike trails that connect things. He would like to see bike trails along state roads and trails along wooden paths.

**Carlene Hicks:** Wants to see additional playground equipment at Obed Park. Her main focus was on playground equipment for younger children. She specifically stated a need for swings, a slide, and sandbox. She also pointed out there is a need for miniature golf.

**Liz Bowman:** Stated she is newer to the area and is impressed with the current amenities, but she would like to see an indoor pool.

**Kyle Davis:** Seconded Mrs. Bowman's desire for an indoor pool and added the need for an outdoor community pool.

**Jacob Atkinson:** Stated he would like to see an indoor facility for swimming and other sports such as tennis and basketball.

**John Peters:** Need for a website. (There is a website Explore Crossville)

**Heather Mullinix:** She would like to see additional kayak entry points

**John Conrad:** Hiking Marathon (more of a statement about interest in the trails)

**Darrell Threet:** – He stated there is a need for designated ATV trails.

## Summary of Public Input & Needs Assessment

The public input process helped us gather information from staff, stakeholders and residents. The survey respondents' demographics were similar to the community demographics as a whole and included both users and non-park users, which is why it is such an important component of the overall response. When comparing staff comments to citizen workshop comments and the survey results, we find, while some had stronger desires for specific facilities over others, the overall direction for future improvements was relatively parallel among the groups. The priorities were also consistent with the deficiencies noted during the planning team's analysis of the current parks and recreation system.

In conclusion, the public input process brought forward consistent themes. Below highlights some of the insight gained during the process and opinions expressed by a majority of respondents:

- Greenways; walking trails, bike trails and lanes
- Indoor and outdoor community pools
- New and additional playground equipment
- Access to waterways
- Additional pickle ball courts
- Additional disc golf courses
- Upgrades to farmers market
- Upgrades to Community Complex including event center
- Additional marketing and signage

In summary, we find that Crossville residents desire connectivity and accessibility. Residents desire the ability to walk or bike to a local park in a safe and time efficient manner. One key takeaway from the Fairfield Glade Focus Group is that small parks spread out through the community would be beneficial. Emphasis on location in highly concentrated areas. Other priorities include community pools, as the residents have to leave the county to find pool access; as well as improving access to existing facilities and natural areas. The results of the public input will help the Parks and Recreation Department prioritize improvements that will benefit the entire community.



# 15 Introduction to Individual Parks

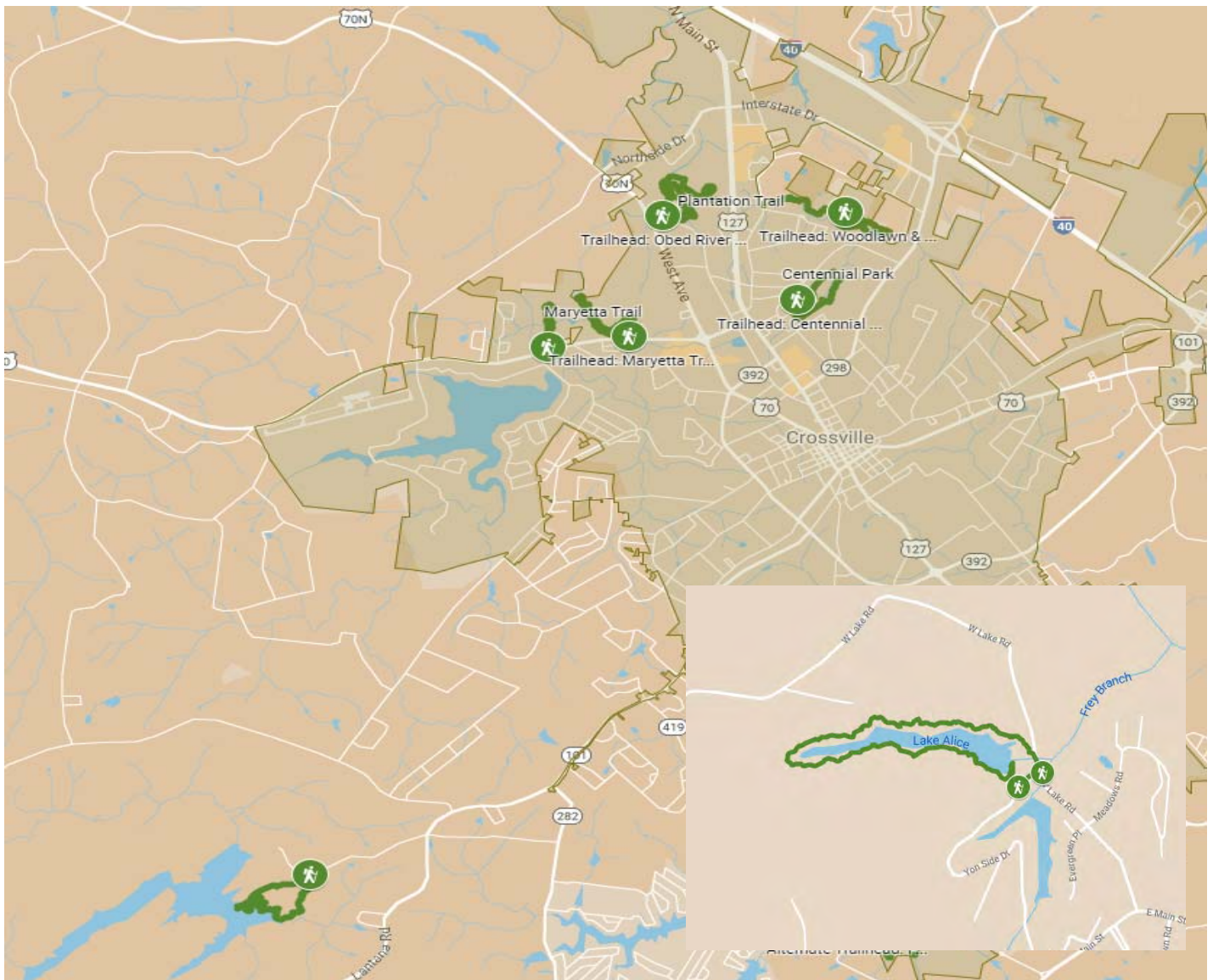




## The Trails of Cumberland County

Located on the southernmost portion of the Appalachian Mountains, Cumberland County sits upon a plateau of unparalleled views of natural beauty. Cumberland County's geographical singularity is defined by the sandstone bluffs, waterfalls, overlooks, natural bridges, and rolling lands of hardwood trees. The Cumberland Plateau sits 1000 feet above the surrounding Tennessee topography and stands as a paragon of biodiverse wildlife and rich history. With all of its natural splendor and rugged wilderness, Cumberland County remains a hiking destination for outdoor recreationists far and wide.

Cumberland County is home to the Obed National Wild & Scenic River, Cumberland Mountain State Park, and Cumberland Trail State Park. Cumberland County has over 75 miles of hiking trails, 18.2 miles of which fall outside state and federal jurisdiction. 18.2 miles of public hiking trails can be found throughout all of Cumberland County, some of which traverse through a number of the five different County day-use parks. These public hiking trails are all rated easy and mainly consist of natural terrain but do offer paved trails in Obed River Park and Centennial Park. Many of the trails feature wooden bridges, benches, informational kiosks, trail markers, and emergency plaques. Visitors will find an opportunity for water recreation and fishing at Lake Alice, Meadow Park, and Obed River Park. All trails are pet friendly but must be on a leash.





## County Trails

- Lake Alice & Adshead Trails (Pleasant Hill)

Distance: 1.5 miles & 0.3 miles

Elevation Gain: 111ft

Trailhead GPS Coordinates Lake Alice: 35.982905, -85.203718 Trailhead

GPS Coordinates Adshead Trail: 35.97699, -85.20264

Current Status: The Lake Alice Trail and the Adshead Trail are unpaved wooded dirt trails that have had improvements made in the past three years. The Lake Alice trail improvements include adding wooden bridges, boardwalks, trailhead kiosks, wooden benches, and 911 markers. There is only enough parking for a couple of vehicles on Yon Side Dr where the trailhead is located. It is recommended to park at a small gravel pull-off on W Lake Rd and walk down to the trailhead. Trailhead parking for the Adshead Trail is located off Main Street on Van Dyke Dr. on a gravel pull-through road. The number of vehicles this gravel lot will hold is unknown at this time.

Short-term goals: A designated parking lot at the Lake Alice trailhead.

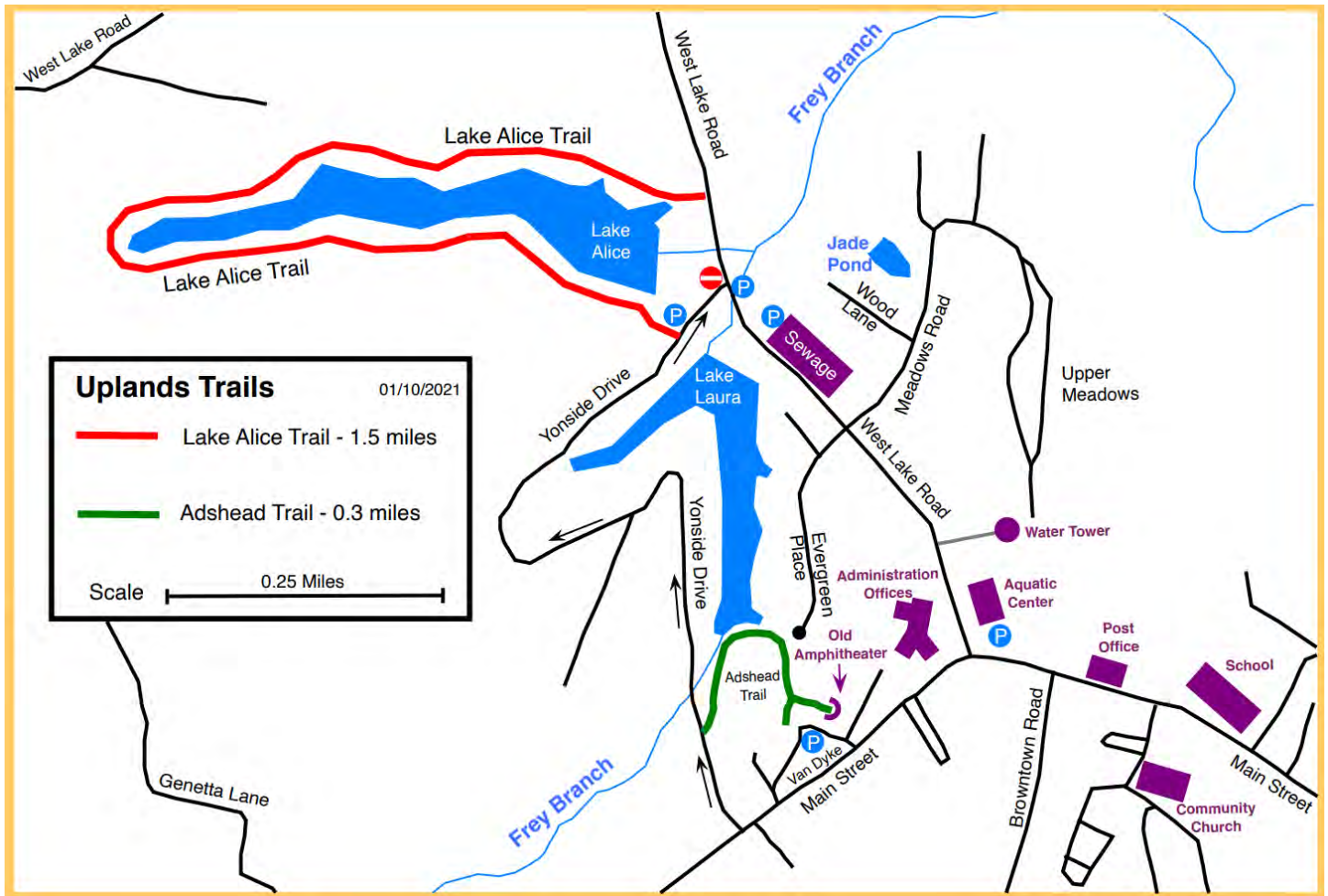
Long-term goals: Increased water access with kayak put-ins and additional hiking/mountain biking trails.

### Lake Alice

Pleasant Hill 1.63 miles

— Title Trail — Other Trail — Park







- Meditation Trail

Distance: 1.0 miles

Elevation Gain: 65ft

Trailhead GPS Coordinates: 35.959534, -85.060152 (1038 Sparta Hwy)


Current Status: The Meditation Trail is an unpaved wooded dirt trail located close to the Sparta Highway. A section of the trail features a recently constructed wooden bridge. Due to heavy rainfall, the bridge has been washed away three different times in recent months. The bridge has been permanently removed and replaced with rock steps through the creek. The parking lot for the trailhead is shared with St. Raphael's Episcopal Church. It is advised to avoid walking this particular trail on Sundays due to the limited church parking.

## Meditation Trail

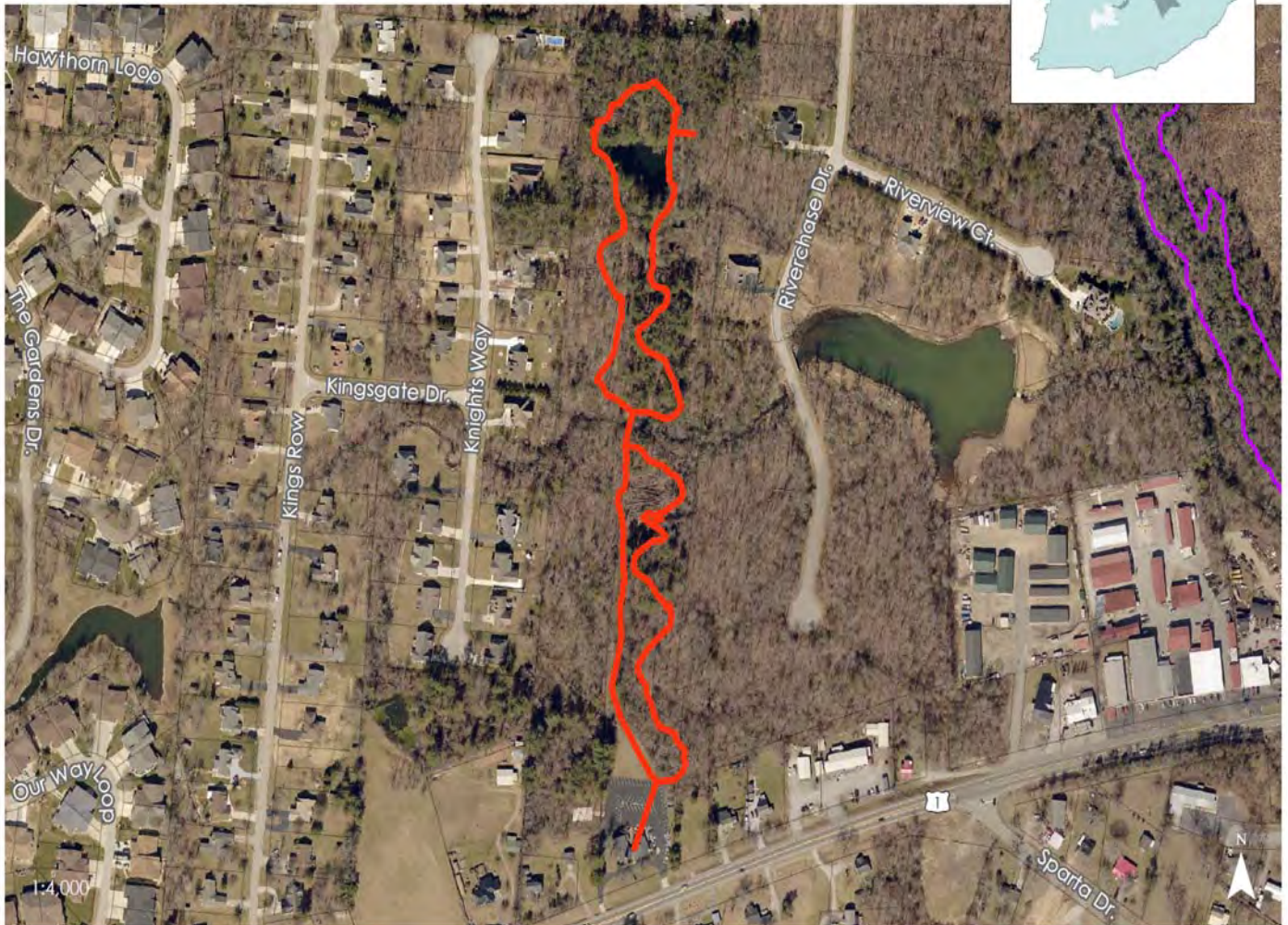
Crossville

0.88 miles

 Title Trail

 Other Trail

 Park



- Maryetta Trail

Distance: 1.7 miles

Elevation Gain: 91ft.

Trailhead GPS Coordinates: 35.960250, -85.049983

Current Status: The Maryetta Trail is an unpaved wooded “lollipop” trail close to downtown Crossville. The trailhead is at the entrance to the city wastewater treatment facility located right off the Sparta Highway. Recently finished gravel parking lot that will fit 15 cars. A section of the trail runs along the Obed River and a section traverses through a wooded hillside. This well-marked trail is complete with a wooden bridge, bench, and 911 markers. The Sparta Hwy bridge will be replaced in 2023/2024 by TDOT/TDEC.

Short-term goals: A short section of trail will need to be added to connect the Sparta Hwy right of way. TDOT/TDEC is aware of the need for the trail to go under the Sparta Hwy and expects to build a small section of paved trail under the bridge once it is replaced. In an effort to practice sustainable outdoor recreation and ensure that these natural resources are not negatively impacted by people, the Community Association of the Obed Watershed recommends:

1. Creating/maintaining natural habitats of native plants, shrubs, and trees along streams and water features as well as other appropriate areas
2. Removal of invasive plant species, particularly along waterways, using environmentally sound practices.
3. Demonstration of rain gardens along the trails with educational signage about the benefits of these areas.
4. Educational signs near native plants; identifying the plants and their importance to the overall habitat, i.e. could include recommendations such as replacing a burning bush with a blueberry bush.
5. Monarch butterfly gardens
6. For bodies of water (lakes, ponds, or streams) within the planned area, signs for good stewardship for clean waters and a means for visitors to properly dispose of trash including recycling options.

Long-term goals: Obed River Park and Maryetta Trail connection. The proposed trail connection travels through acres of private property. City officials have approached the land owner and received positive feedback about the proposed extension. If the connection followed the same path leading from the Obed River Park, then the trail would continue along with the South Bank of the Obed River until it reached the northernmost point of the Maryetta Trail.

Maryetta Trail extension would cross the Sparta Hwy and end at Housing Authority property. This proposed trail would intersect another planned trail on City property.




# Maryetta Trail

Crossville

1.63 miles

 Title Trail

 Other Trail

 Park



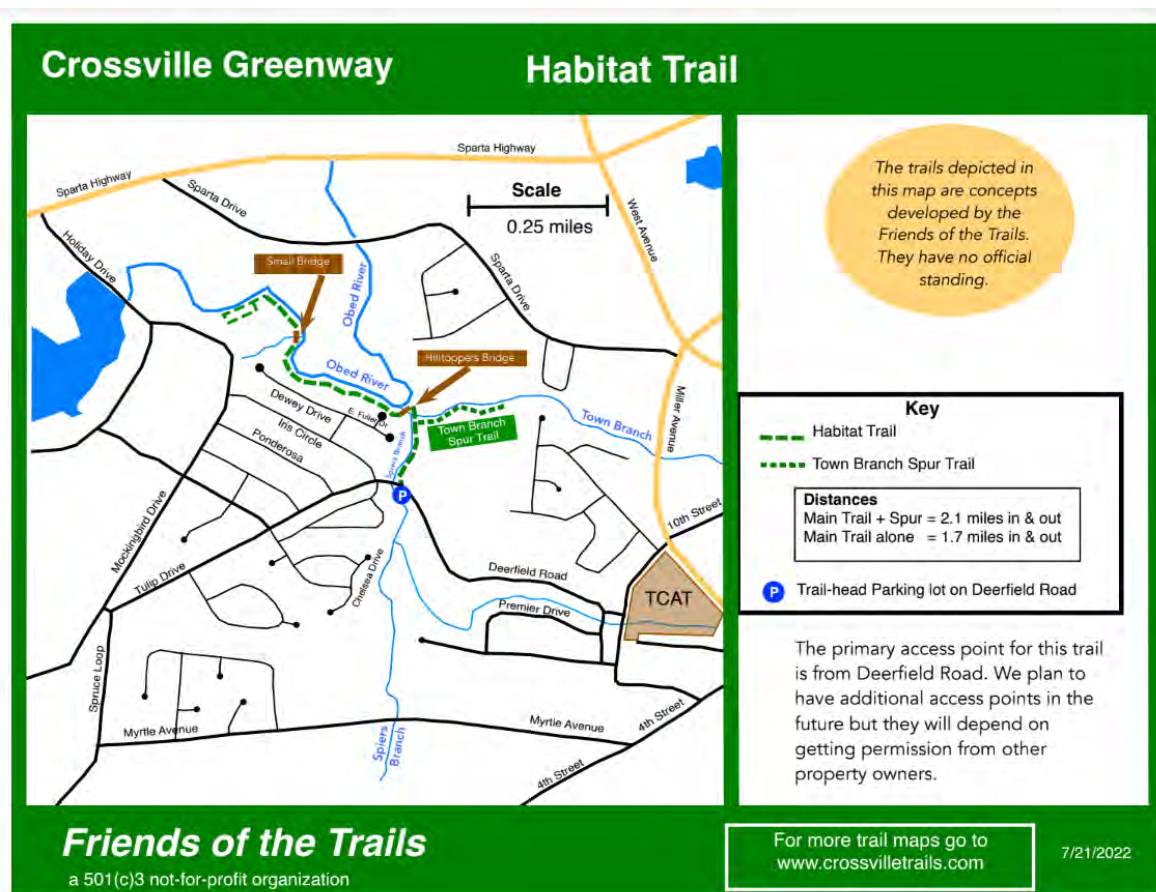
- Habitat Trail

Distance: 2.1 miles

Trailhead GPS Coordinates: 35.949607, -85.048856

Current Status: Construction on the Habitat Trail is currently underway and is expected to be finished and open to the public this year by the end of August. The Habitat Trail is unpaved wooded dirt Y-shaped there and back trail. The trailhead is located off Deerfield Road and features a newly-constructed parking lot that can hold up to a dozen vehicles

Long-term Goals: *If granted permission from property owners, the trail will be extended along the Obed River where it will ultimately connect to the Maryetta Trail. This proposed extension would provide other possible access points.*





- Centennial Park Trail

Distance:	1.67	miles
Elevation	Gain:	26ft
Trailhead GPS Coordinates: 35.96466, -85.0306		

Current Status: The Centennial Park Trail is a paved trail that encircles the baseball fields at Centennial Park. The park is complete with a dog park, skate park, sports fields, playgrounds, and an open grassy picnic area. There is a paved parking lot with ten designated parking spaces located just off Industrial Boulevard. There are also benches, bleachers, and picnic tables accessible along the trail. The paved trail is four feet wide and has an estimated grade of 5% or less except for a section of 0.7 miles of the trail that has a grade of 6-12%. Visitors using wheelchairs and other mobility equipment may have some difficulty in this 0.7-mile segment of the trail.

Long-term goals: A paved trail connection from Centennial Park to Woodlawn Loop. The proposed extension is on city-owned property and would cross Industrial Blvd near the Fire Station before reaching the Little Obed River. This proposed extension would also require a bridge over Little Obed River to reach Wood Lawn Loop. The City of Crossville received a \$50K grant to cover the engineering cost of the bridge, which is currently underway.

The City was granted \$630k (from the State of Tennessee) plus \$70k in matching contribution, to build a paved ADA trail between Centennial Park and the Obed River Park. The City estimates these funds will allow an extension at least to the Old Jamestown Hwy. **The award of this grant is expected in October 2022.**

## Centennial Park Trails



- Obed River Park Trail

Distance: 1.5 miles

Elevation Gain: 72ft

Trailhead GPS Coordinates: 35.97406, -85.04557

Current Status: The Obed River Park Trail is a paved trail that partially parallels the Obed River just off of West Avenue, close to downtown Crossville. There is a paved lot as well as a gravel parking lot at the trailhead at the Obed River Park. The Route 70 North Bridge will be replaced in the 2021/2022 year by TDOT/TDEC.

Short-term goals: Create ADA access at the trailhead at the Obed River Park. The Obed River has eroded away sections of the paved trail and needs asphalt repairs. More kayak waterway access points along the Obed River are needed. Signage along the main roads for Obed River Park.

Long-term goals: A short section of trail will need to be constructed within the Obed River Park to connect the existing paved trail to the state right of way for Route 70 North. A possible route for the proposed extension has been previously been scouted. TDOT/TDEC is aware of the need for the trail to go under Route 70 North and will likely construct a small segment during the construction of the bridge. There is property accessible by Route 70N and is currently being looked at as a possible parking lot/ trail access point.

## Obed River Park Trails





- Wood Lawn Loop & Little Obed River

Distance: 1.2 miles & 1.8 miles

Elevation Gain: 98ft

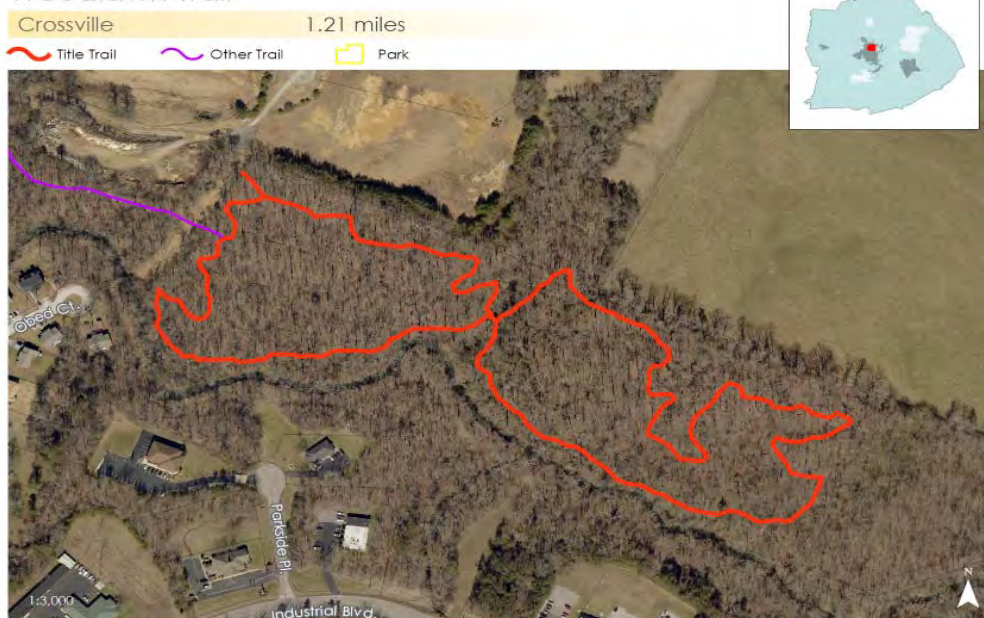
Trailhead GPS Coordinates: 35.974659, -85.025064

Current Status: Constructed in 2017, the Wood Lawn Loop is a figure-eight unpaved wooded dirt trail that runs along the Little Obed River. The Little Obed River is not always visible from the trail. Constructed in 2020, the Little Obed River Trail can be accessed through the Wood Lawn Loop trail. The Little Obed Trail is a there and back trail that ends at the Old Jamestown Hwy. The plan is to eventually connect the Little Obed River Trail to the Plantation Trail. In order to achieve this extension, the trail will have to pass over Old Jamestown Hwy and under Route 127 also referred to as Crossville's Main Street. This connection would also require one crossing of the Little Obed River. To access the trailhead parking, take Wyatt Ct down to the gravel parking lot. The parking lot and last section of the road are gravel.

Short-term goals: A section of the Little Obed River Trail that runs through the Bohannon property has a small bridge that sets too low to the water. During times of heavy rainfall, the small bridge has been washed away. Repairs have been made but a redesign to raise the bridge higher above the flood level is needed. Kayak launch/water access point along the Little Obed River.

Long-term goals: The Little Obed River Trail connection to Plantation Trail. The Little Obed River Trail currently dead-ends at the Old Jamestown Hwy and the Plantation Trail comes to an end just before Route 127. In order to achieve this trail connection, it will have to pass over Old Jamestown Hwy and under Route 127 (Main Street). Currently working on securing permission from property owners on the South bank (Potter property-Plantation Trail) and North bank (Methodist church property- Little Obed River Trail). The Potter property has said that if the proposed were to happen it would need to be paved and fenced to prevent hikers from wandering off the trail onto private property. The City has started discussing the need for the trail to pass under 127 with TDEC/TDOT. TDEC/TDOT is aware and it is expected that they will construct a short section of paved trail.

#### Woodlawn Trail



- Plantation Trail

Distance: 0.85 miles

Elevation Gain: 82ft

Trailhead GPS Coordinates: 35.973718, -85.044335

Current Status: The Plantation Trail is a paved trail until you reach the Old Dam, at which point the trail transitions to a dirt path. Trailhead parking is located within the Obed River Park. Proceed 0.25 miles to the gravel parking lot at the end of the road. The first half of the trail is paved, with the second part of the trail that parallels the Little Obed River is a dirt path. There is exercise equipment accessible by the Charleston Plantation along the paved portion of the trail. The unpaved section of the plantation trail traverses by a dog park, before coming to an end at Route 127. There is a paved access road to the dog park with a small paved parking lot, but you must first enter an apartment complex to access the road.


Short-term goals: Cumberland County would like to take over the trail and eventually pave the last half of the trail. The Eastern portion of the Plantation Trail is impassable at times due to the overgrowth of vegetation. This section of trail is currently privately owned, but if it were to be donated to the county it could then be paved solving the overgrowth issue.

## Charleston Plantation Trail

Crossville

0.85 miles

 Title Trail

 Other Trail

 Park





- Soldier's Beach Trail

Distance: 1.7 miles

Elevation Gain: 154ft

Trailhead GPS Coordinates: 35.899123, -85.088388

Current Status: The Soldier's Beach Trail is an unpaved wooded dirt trail at Meadow Park Lake. The trail is a 1.7-mile loop, a portion of which runs along the lake. Take City Lake Road off of Lantana Road for about half a mile until you see a gravel trailhead parking lot on your left. City Lake Road dead-ends at the park marina and office where there are facilities available for use as well as a boat ramp and campsites.

Short-term goals: **More signage along the main roads for Meadow Park and marketing of park events.**


Mid-term goals: **Increase the number of kayak access points around the lake. Expand the park with additional hiking/ mountain biking trails.**

## Soldier's Beach Trail

Crossville

1.79 miles

 Title Trail

 Other Trail

 Park



- Future Cumberland County Bike Trails

- Short-term goal: **Design Livingston Road Bike Trail**
- Mid-term goal: **Begin preparation/construction of the Livingston Road Bike Trail**

Distance: 1.5 miles

Terrain: Paved bike route, rails without trails

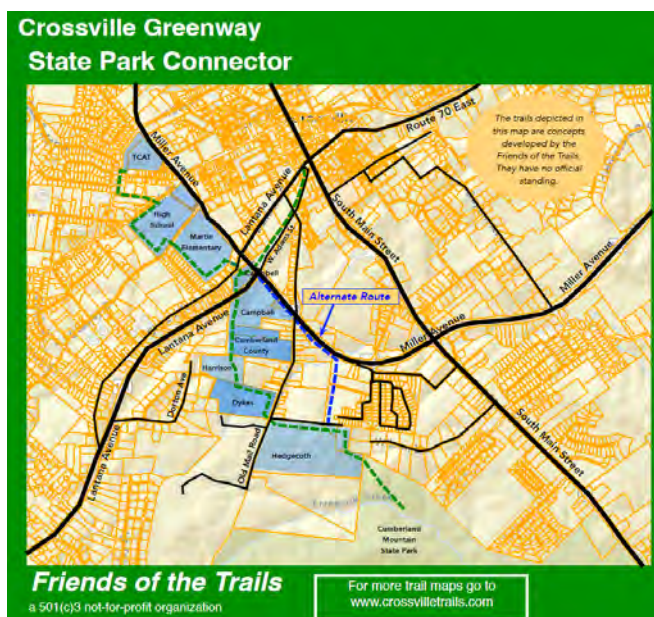
This proposed paved route would follow along an old railway line, which would connect the Crossville Train Depot to Obed River Park and the Cumberland County Community Complex. A 12-foot wide paved trail would allow this route to be a pedestrian as well as bicycle-friendly means to travel from the historic downtown to Crossville Greenways.

- Short-term goal: **Bike lane on Route 127 to Cumberland Mountain State Park**

Distance: 1.5 miles

Terrain: Paved bike route alongside Route 127

This proposed 1.5-mile bike lane would connect historic downtown Crossville to Cumberland Mountain State Park via Route 127.



## Future Cumberland County Trails

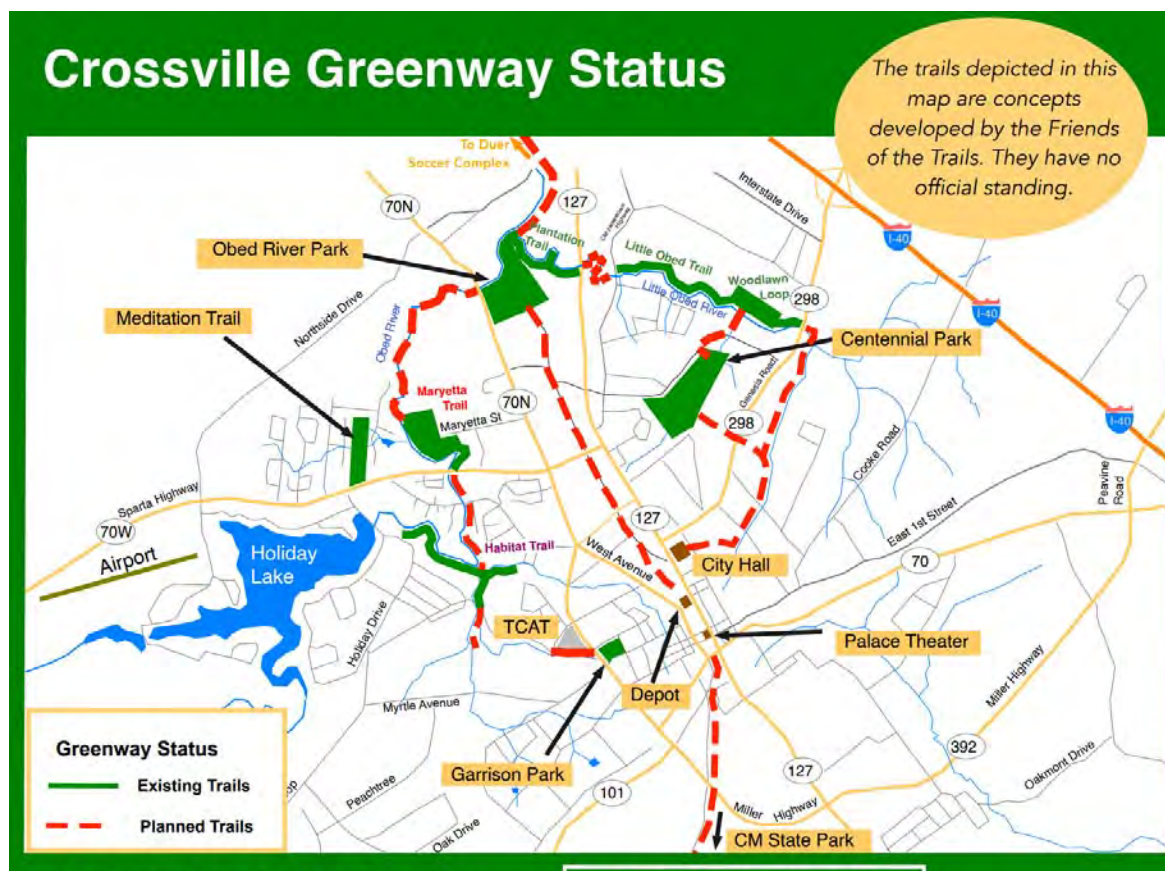
The Cumberland County Friends of the Trails (FOTT) is a volunteer group dedicated to building and promoting the use of hiking trails in Cumberland County. FOTT regularly hosts fundraising events to help maintain the trails throughout Cumberland County. The very successful September Hiking Marathon is the next event FOTT will host. With each passing year, the popularity of Cumberland County trails grows, as well as the demand to create new trails. FOTT is ardent about addressing this demand for more hiking trails and has created a greenway plan to connect the existing Crossville trails.



A pedestrian-friendly city ensures a healthier community and an environmentally sustainable way to travel.

Short-term goal: A 0.75-mile loop on the Tennessee College of Applied Technology (TCAT) campus.

The TCAT president, Cliff Wightman, and the Board of Regents have given the FOTT permission to build the 0.75-mile trail but would like to see trail plans and a land survey. The **trail design and a land survey** are still needed before trail construction can commence. The potential use of this proposed trail is great. TCAT students would have access to exercise on campus as well as potentially have foot access to downtown restaurants and businesses.



## Obed River Park

**Location:** 24 Obed River Park Drive, Crossville

**Size:** 35 Acres

**Classification:** County Park/Arboretum

### Overview:

The Obed River Park was established in 1982 and offers a 1.5 mile paved walking trail, much of which is along the banks of the wild and scenic Obed River. The park encompasses approximately thirty-five acres. Located just past the entrance of the Cumberland County Complex off highway 70 west, the park has two historical markers, including a broken dam from the 1930's and the site where the railroad once crossed the Obed River.

Grant-funded upgrades for the park in 2015 included the addition of twenty-seven pieces of outdoor workout machines and ADA-compliant picnic tables, restroom stalls and water fountains. Recycling bins were also added throughout the park. In 2018, the first portion of the Plantation Trail was established and is currently a secondary trail. When complete, the Plantation Trail will connect Obed River Park with Crossville Centennial Park.

The park is a level one arboretum with sixty species of flora identified with markers. The grassland of the park is home to a non-native grass known as blue stem. Uncommon in Tennessee, the grass can be found in the old railroad beds and is protected in the park. The park has three shelters that may be rented on a daily basis. The large shelter rents for \$50.00 a day and the small shelters rent for \$25.00 a day. The large shelter offers playground equipment. If not rented, the shelters may be used for free during the day but guests must be willing to share the space with everyone.

### List of Amenities:

Outdoor Workout Machines – Excellent Condition

Playground Equipment – Fair Condition

Covered Picnic Areas – Excellent Condition

Restroom – Excellent Condition

Paved Parking Lot – Good Condition



## **Community Complex:**

The Cumberland County Community Complex (Fairgrounds) is adjacent to Obed River Park, thus bringing them into this plan. Goals for the Complex include:

- Multipurpose meeting space at Community Complex/Obed River Park
- Upgrade to bathroom at Community Complex/Obed River Park
- Design for a roof over the arena
- Walking trails from Obed River to the Community Complex to Main Street area

## **Recommendations:**

### **Short Term Goals:**

- To secure easements from private property owners on the other side of the Obed River to connect with Centennial Park. The project is currently in the right-of-way phase.
- To convert one of the small shelters into an outdoor classroom for educational programming. Specific plans include hosting river conservation and gardening classes.

### **Mid-Range Goals:**

- To convert the Plantation Trail, currently a secondary trail, into a primary trail. This will include paving and building out the trail.
- To upgrade the playground equipment and ADA-accessible features in the park.

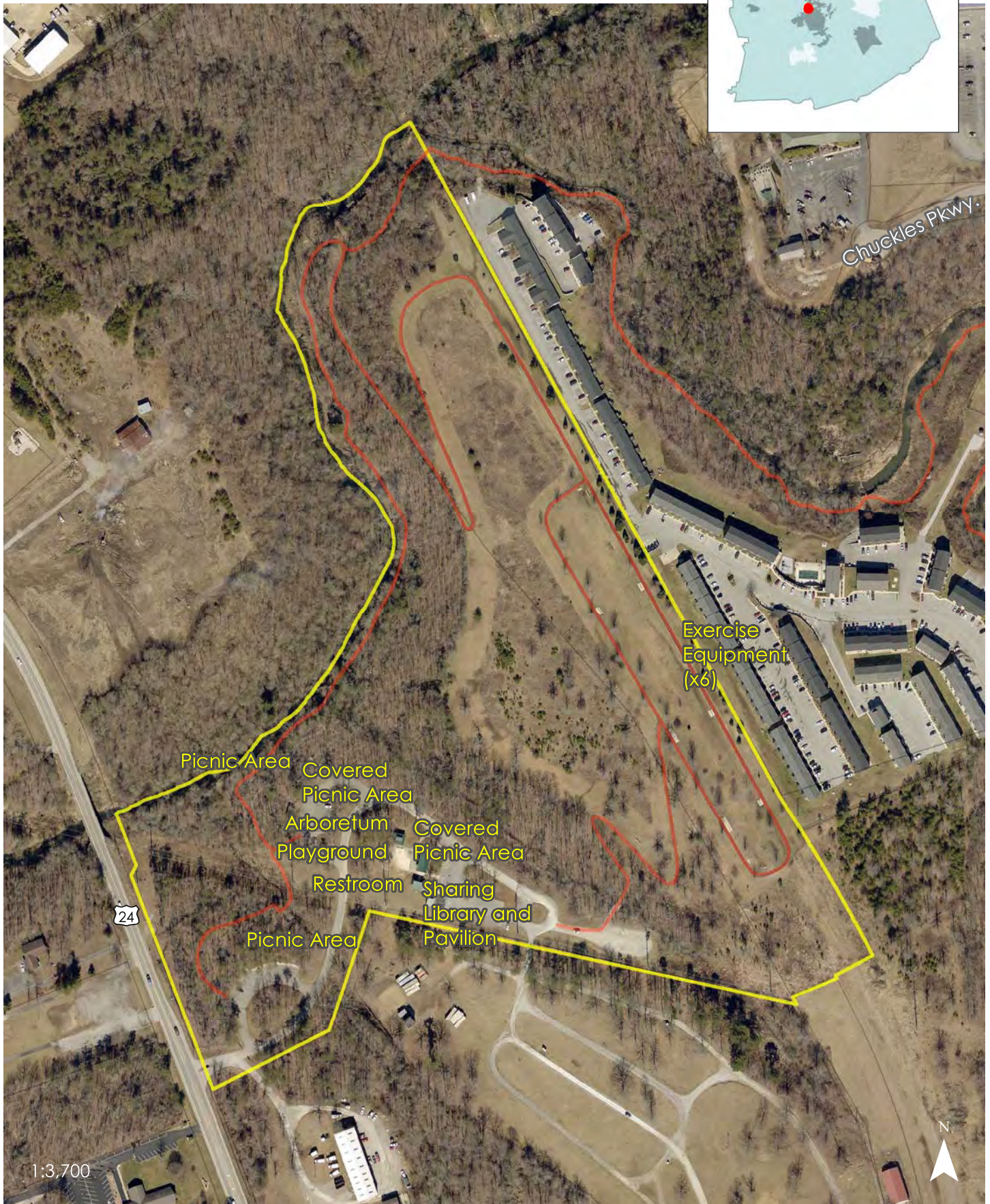
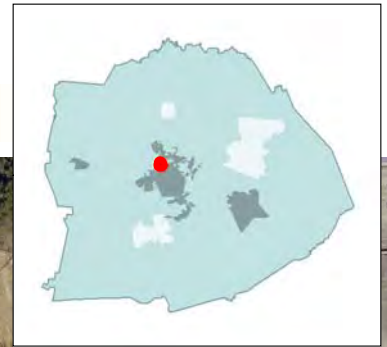
### **Long Range Goals:**

- To rehabilitate the park to make it completely family-oriented.
- To connect all the parks in Cumberland County together through the design of a “loop trail.” This will provide visitors seamless bike and pedestrian connectivity to every park in the county.



# Obed River Park

Cumberland County





## East Cumberland Community Park

**Location:** 18354 Hwy 70 East, Rockwood, TN 37854

**Size:** Approximately 5 acres.

**Classification:** Mini-Park

### Overview:

East Cumberland Community Park is located southeast of Crossville in the Rockwood community. The park is on the grounds of the Westel Fire Hall. This small community park has expanded over the years, with the most recent improvements being the addition of playground equipment.

Features of the park include:

- A quarter-mile paved walking trail with lighting
- Playground equipment
- A picnic area
- A gazebo with a seating area

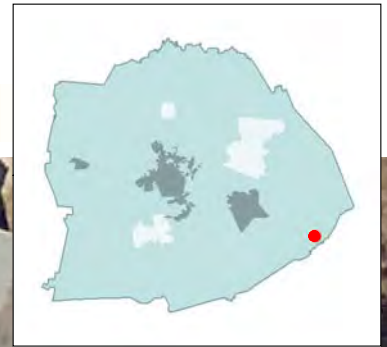
### Recommendations:

Overall, the park is well maintained. The park could benefit from the following:

- Landscaping to provide shaded rest areas and improve the appearance
- Paving of parking lot
- Additional playground equipment that is ADA compliant
- Upgraded signage
- Upgrade lighting to LED lighting
- Make appropriate ADA-compliant upgrades throughout the park

# East Cumberland Community Park

County



1:600

## Centennial Park

**Location:** 837 Industrial Blvd Crossville, TN 38555

**Size:** 83 acres

**Classification:** City Park

**Overview:** Since 1992, Centennial Park has served Crossville as a central location for a variety of recreational activities. During its initial phase, known then as “Crossville Recreational Park,” it included four state-of-the-art adult sized regulation softball fields with field house and concessions, three lighted picnic pavilions, a one-half mile wood chip walking trail, combination basketball/tennis court area, regulation sized double tennis court, six concrete and clay horseshoe pits, four sand volleyball courts and a large child play area with sand boxes. Centennial Park has expanded tremendously since then and now totals 83 acres. New features, such as pickle ball courts and a dog park for large and small dogs, have enabled the City of Crossville to modify Centennial Parks offerings to meet the community’s needs.

Programs at the park include

- baseball/softball events
- horseshoe tournaments
- fireworks events
- concerts
- Summer food service program
- Cornhole tournaments
- Easter events

Centennial Park currently includes

- 4 lighted adult softball fields
- 3 lighted youth softball/baseball fields
- 1 lighted regulation baseball field
- 2 lighted tee ball/coach pitch fields
- concessions/fieldhouse facilities  
(Fields/Concession collectively known as Turner Complex)
- 2 lighted sand volleyball courts
- 4 lighted basketball ½ courts

- 8 individual pickle ball courts
- A skate park
- Horseshoe Pavilion w/12 clay horseshoe pits (under shelter)
- 2 lighted picnic shelters
- dog park with separate one-acre areas for both large and small dogs
- a child's play area with sand boxes
- a fully accessible playground
- 2 large parking lots

### **Current Status:**

Overall, these facilities are well-attended and in good condition, and Crossville has strived to update facilities to reflect the community's interests. For instance, to best serve the community, Crossville recently converted the former tennis courts into pickle ball courts because of a decline in popularity of the tennis courts and an increase in demand for more pickle ball courts. These parks are often occupied, which may indicate a demand for more courts. Baseball and softball leagues of all ages play at the park, and playgrounds are present at various areas of the park. Currently, the area behind the dog park is being looked at to add two additional baseball/softball fields. Picnic areas encourage groups and families to remain longer and engage in different offerings at Centennial Park. Also having a skate park, dog parks, a volleyball court, basketball half-courts, and horseshoe pits at the park ensures that Centennial offers facilities for a wide variety of interests. Centennial Park contains two large parking lots that suit the demands of the park.

A rain garden area is present around the entrance to the south parking lot. According to the US Fish and Wildlife Service, this rain garden was part of a stormwater management project to address water quality of a drainage channel and tributary discharging into Little Obed River. Because of the large amount of commercial and industrial property in the area, increased stormwater volumes could potentially have led to extensive erosional damage north of Highway 127. Fortunately, projects to address the drainage of stormwater volumes from roofs, parking lots, and road surfaces were implemented in 2011. More information about the Obed River Watershed Plan can be found at

<https://www.tn.gov/content/dam/tn/agriculture/documents/landwaterstewardship/Obed%20River%20WBP%20Cumberland%20Fentress%20Cos.pdf>.

**Recommendations:**

Most facilities have been kept up-to-date and general maintenance is in good condition as well. As with any popular park, Centennial requires continual updates due to wear-and-tear, depreciation of structures and equipment, changes in demand, and general weather exposure.

**Short-term goals:**

- Design repurposing the regulation baseball field due to decrease in use of the full-size diamond. Repurposing could include converting the space to youth or adult softball fields.
- Design relocation plan for dog parks if baseball field conversion requires.
- Design splash pad-type play area,
- Pave gravel area between horseshoe pavilion and playground.
- Replace steps at horseshoe pavilion.
- Repair roof at horseshoe pavilion
- Monitor needs and possible and possible opportunities for the addition of more pickle ball courts.
- Repair brickwork on the ball park flower beds.
- Replace picnic tables at skate park
- Market attractions and events through social media and on website.
- Update playground equipment by Turner Complex to meet ADA standards.

**Mid-term goals:**

- Begin repurposing construction of regulation baseball field to youth or adult softball fields.
- Additional baseball/softball fields (adult size w/300ft fence)
- Relocate dog parks as needed.
- Begin construction of splash pad-type play area.
- Begin process to add more pickle ball courts.
- Create walkway from new Hilltoppers property to Centennial Park.
- Repair pavement between park areas and in parking lots
- Repair siding at fieldhouses as needed.

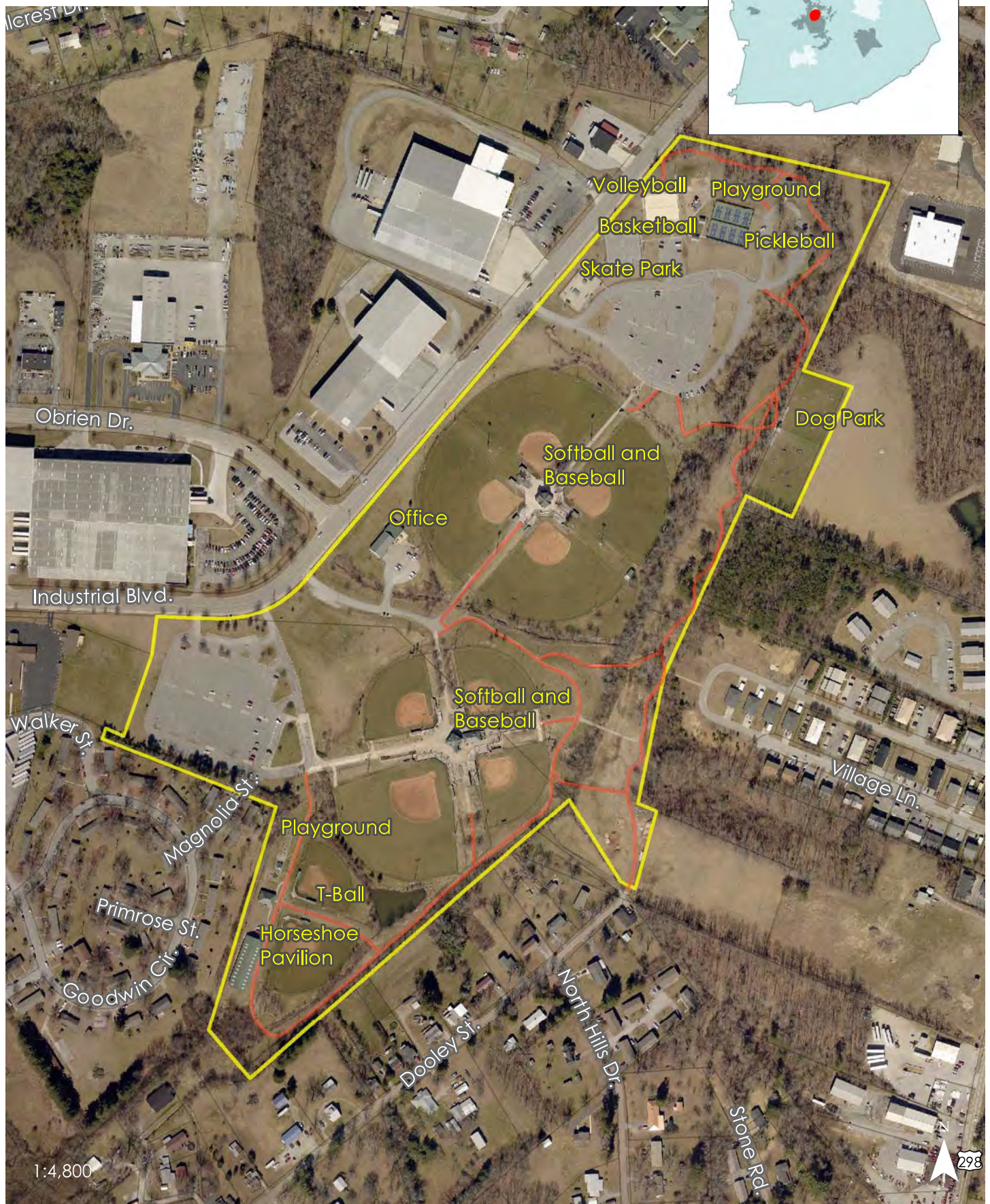
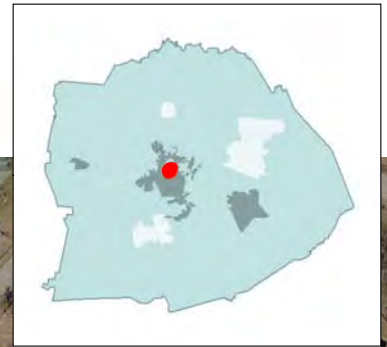
**Long-term goals:**

- Replace roof at horseshoe pavilion
- Add additional pickle ball courts according to need shown.
- Completion of splash pad-type play area.
- Add flora to flower beds on ball field area.
- Keep up with general maintenance to park attractions; repairs to fieldhouse and restroom structures.
- Add permanent restroom structures as demand requires.
- Repair gaps in fencing
- Update signage



# Centennial Park

Crossville



## Garrison Park

**Location:** 4<sup>th</sup> Street and Yvonne Avenue

**Size:** 7.8 Acres

**Classification:** Neighborhood Park

### Overview:

Garrison Park was built around the mid-1920s and was once host to a minor league baseball team, from the 1930s to the 1950s the Crossville Blues called Garrison Park Home. It is located on the west side of downtown Crossville next to the Phoenix School, the park is accentuated by a stone entry. The city applied for the 2016 LPRF Grant Cycle, was awarded, and began construction in August 2018. The renovated park opened in 2019. The renovated park contains a state-of-the-art playground, splash pad, a small covered picnic area, restrooms, and a fresh basketball court. Sidewalks, parking, and abundant green space finish the renovations. The park area also has a Teens Against Drugs (TAD) Center, with the building being owned by the city and leased to the TAD Center.

### Review:

The park is situated along Miller Avenue, a four-lane road with sidewalks and heavy traffic, a new chain-link fence separates the park, basketball courts, and this busy road. There are 3 schools within walking distance of Garrison Park, the Cumberland County Highschool, Glenn Martin Elementary, and Tennessee College of Applied Technology. Structures on the site include a playground, splash pad, a small covered picnic area with restrooms, and a recently resurfaced basketball court.

The park appears to be well-maintained and completely ADA-compliant. The planning team did notice the asphalt parking lot had some cracks and could be due for resurfacing.

### Recommendations:

- Provide shade trees around the perimeter of the park and for shade on the south side of the TAD Center. By increasing tree cover around the park, there will be a significant reduction in the risk of excessive sun exposure for children and ensure that healthy play opportunities are available all summer long.

- Playground equipment is in direct sunlight, incorporating shade sails over playground equipment would benefit not only the children but the playground equipment. This would allow the children a longer play period without overheating, will keep equipment cooler to the touch, increase the life of the playground equipment, and protect children from harmful UV rays.
- Resurface asphalt parking lot to address cracks and vegetation growing in the current surface.
- Add additional shelter and benches for picnicking and gatherings in the green space



# Garrison Park

Crossville



## Duer Soccer Complex

**Location:** 558 Crossroads Drive

**Size:** 14 Acres developed, 46 total Acres total

**Classification:** Sports Complex

**Overview:**

Duer Soccer Complex is located north of Downtown Crossville near Interstate 40 off Hwy 127. The complex was built in 2008 and opened in 2009. Of the roughly 46 acres, the complex utilizes approximately 14 acres. The complex has six full-size regulation soccer fields, which are currently sub-divided into seven playing fields.

**Review:**

Since this park was built in 2008-9, the planning team discovered few issues; however, the park lacks support facilities such as a playground for younger children and more activities for parents. The park does have a paved trail with three laps equaling one mile.

The only access is by automobile.

Both the signage on Hwy 127 and the monument signage on Crossroads Drive are difficult to read.

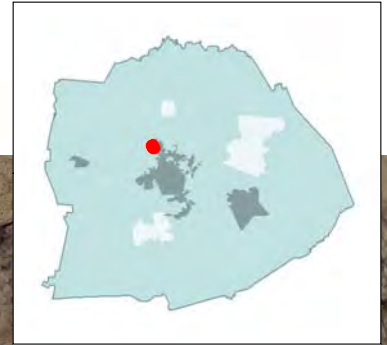
**Recommendations:**

- Replace entry signage at Hwy 127 and Crossroads Drive with large signage
- Continue general maintenance. Need action items list such as the defibrillator machine needs battery replacement. Employee noted issue but problem has not been addressed.
- Companion seating for bleachers is needed
- AC unit added on the west side of the building needs to be weather sealed.
- Maintenance vehicles appear to be driving on grass in locations at path intersections. Installing large boulders, which could also be used as seating, could help reduce the problem
- Provide loop walking trail with trail markers to indicate distance
- Provide playground area and picnic area with shelter for families



# Dr. Carl T. Duer, Sr. Soccer Complex

Crossville



1:3,700



## Meadow Park Lake

**Location:** 1437 City Lake Rd, Crossville, TN 38572

**Size:** 2,211.06 acres total lake/park

**Classification:** City Park

**Overview:** Meadow Park Lake is located to the southwest of Crossville between the city proper and lake Tansi. The recreational site boasts playground equipment, a full disc golf course, hiking trails, cabin and primitive camping sites, and a marina on the adjoining lake to the south of the park. Known as “City Lake,” the body of water was dammed in 1938 and spans 269 sq. acres; this lake serves as the namesake of the park and attracts hundreds of visitors, locals and tourists alike. The lake is a popular destination for fishermen, boat enthusiasts and kayakers and canoers alike and the Meadow Creek Falls Dam serves as an aesthetically pleasing and interesting feature to the park. The lake is relatively shallow with depths reaching roughly 24 ft, but the body of water is home to popular sport fish such as bass, catfish, and crappie. While the lake comprises the main draw to the park, perhaps the true jewel of this site is Soldier’s Beach Trail, a 1.9-mile loop with its trailhead located conveniently on the road leading to the lake’s shore. The trail features waterfront views of the lake inaccessible by automobile; thus, hiking the trail allows for a truly unique perspective of the expansive lake and grounds that comprise the park.

Existing amenities include\*:

- Marina and boat slips- Excellent
- Boat ramps to lake access- Fair
- Boat, kayak, and canoe rental- Above average
- Primitive camping grounds- Fair
- RV Sites with water hookups- Fair
- Playground- Above Average
- Pavilions- Above Average
- Disc golf course- Excellent

**\*- Amenities are categorized by their condition: poor, fair, above average, and excellent**

**Current Status:** Presently, the park is maintained by the City of Crossville with the grounds appearing maintained and facilities and amenities properly cared for. The Marina and docks are in good condition and boats fill a majority if not all of the slips. The boat docks provide a safe and accessible way to view the lakefront. The playground equipment and nearby pavilions have been installed in recent years, with nearby swings and benches appearing to also be in good condition. The disc golf track and signage are well maintained with modern looking baskets, clean concrete teeing areas, and kempt fairways. The primitive camping sites are maintained and the nearby restroom facilities, funded through a Local Parks and Rec Fund, offer a clean and convenient facility for visitors. Recently, on-site dated Cabins were recently removed. Officials are also looking at raising the dam to create about 700 acres of water as well as add deep water fishing opportunities. The park's hours currently render it open to the public until 10 P.M. April 1<sup>st</sup>- Memorial Day, until 11 P.M. Memorial Day – Labor Day, and until 6 P.M. October 31<sup>st</sup> – March 31<sup>st</sup>. The current hours are a benefit to the park, allowing for greater accessibility to visitors using the park's facility as well as the lake access. Meadow Lake's parking infrastructure is well suited for the various activities that draw visitors, with Soldiers Beach Trailhead, the playground and pavilion area, camping sites, and marina, each offering their own lots; the latter of which features angular parking for trailers carrying boats.

**Recommendations\*:**

- Within the park there exists some unused space between the road and the playground and pavilion area, with plenty of greenspace elsewhere in the park, this area would benefit from an interactive art installation or seating area. (Short-term)
- In the northern corner of the park, there is a small, white brick building that formerly served as a Boy Scout Hall but now is unused. This building and the grounds surrounding it appears less maintained than the rest of the park. The entire site would benefit from the repurposing of this facility. (Mid-term)

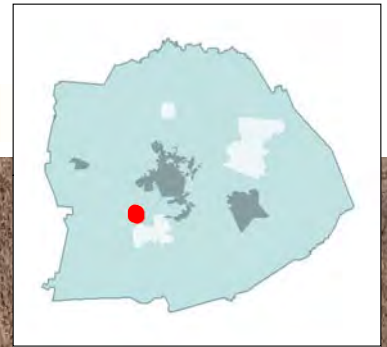
- The signage for the disc golf track new and well maintained but some of the other signage throughout the premises and on City Lake Rd. appears more indistinct. Increasing signage at the boat rental office, within the park along the road, and leading to the park would assuredly provide the site with built in marketing and attract more visitors annually. (Mid-term)
- Another ADA restroom facility located at Soldiers Beach Trailhead would serve as a convenience for hikers that might not otherwise travel to the camping grounds across the park. (Mid-term)
- Raise the dam, effectively expanding the lake to 700 acres and increasing deep water fishing opportunities.
- With the backdrop of the lake, and water recreation serving as the theme of the park, a splash pad would be a welcome feature, allowing children to play in the water in the summer months. (Long-term)
- On the disc golf track there are power lines throughout some of the holes. Burying the utilities throughout the park would not only solve this issue, but give the park a more natural look, highlighting the lakefront, wooded areas, and trails that comprise the facility. (Long-term)

**\*- Goals are categorized by Short-, Mid-, and Long-term**



# Meadow Park Lake

Crossville





## Conclusion:

Tennessee is heralded as a tourist destination for its natural beauty. This plan shows how Cumberland County plans to enhance these natural, as well as man-made, recreational areas to draw visitors to the county and enhance the lives of current residents. Cumberland County has many local and state parks, as well as a diverse natural landscape, offering activities for all ages and abilities. This plan has laid out the county's current conditions at their six main parks – Obed River Park, East Cumberland Community Park, Centennial Park, Garrison Park, Duer Soccer Complex, and Meadow Park Lake – as well as how the county can best use these resources to shape the recreational needs going forward. In addition to the park system, this plan addressed the many trails throughout Cumberland County as well as other facilities and points of interest.

The State of Tennessee has communicated to its cities and counties to work to utilize the natural, cultural, and historical resources to improve their overall quality of life within their municipalities. In keeping with this order, this Cumberland County Parks and Recreation Master Plan addresses the development and implementation of strategies to improve access to recreation and public land use to facilitate physical activity. Cumberland County's Parks and Recreational Master Plan has followed the steps laid out on the National Recreational and Parks Association's website. An initial internal assessment was conducted. State, City and County officials worked with a cross-section of the community to ensure all residents had a voice in what they wanted to see accomplished in Cumberland County. Next, data was collected and analyzed; ranking the needs and wants of the residents. In creating this master plan, multiple stakeholder meetings and focus groups were held. During these meetings, the committee composed a list of short, mid, and long-term goals they hoped to accomplish. The committee also compiled an inventory of current parks and their condition.

After all the data was gathered, the comprehensive goals for the Cumberland County Parks are as follows:

**Short-term goals:**

- Secure easements from private property owners on the other side of the Obed River to connect Obed River Park with Centennial Park. (The project is currently in the right-of-way phase.)
- Convert one of the small shelters into an outdoor classroom for educational programming at Obed River Park.
- Design a repurposing of the regulation baseball field at Centennial Park due to decrease in use of the full-size diamond.
- Design a relocation plan for the dog parks at Centennial Park if the baseball field conversion requires it.
- Design a splash pad-type play area at Centennial.
- Pave the gravel area between horseshoe pavilion and playground at Centennial.
- Replace the steps at horseshoe pavilion and repair the roof at Centennial.
- Monitor needs and possible opportunities for the addition of more pickle ball courts at Centennial.
- Repair brickwork on the ball park flower beds at Centennial.
- Replace picnic tables at the skate park at Centennial.
- Market attractions and events for Centennial Park through social media and on the website .
- Upgrade lighting and pave the parking lot at East Cumberland Community Park.
- Incorporate shade sails over playground equipment and splash pad at Garrison Park.
- Resurface the asphalt parking lot at Garrison Park.
- Install additional shelter and benches for picnicking and gatherings in the green space at Garrison Park.
- Continue general maintenance at Duer Soccer Complex. Need action items list such as the defibrillator machine needs battery replacement. Employee noted issue but problem has not been addressed.
- AC unit added on the west side of the building at the Soccer Complex needs to be weather sealed.
- Replace entry signage for Soccer Complex at Hwy 127 and Crossroads Drive with large signage.
- Build a kayak launch at Meadow Park Lake.
- Fill unused space with an interactive art installation or seating area at Meadow Park Lake.
- Build an indoor recreation facility and aquatics center.
- Repurpose of the former boy scout hall at Meadow Park Lake.



**Mid-term goals:**

- Convert the Plantation Trail at Obed River Park into a primary trail. This will include paving and building out the trail.
- Upgrade the playground equipment and ADA-accessible features at Obed River Park.
- Put in additional playground equipment that is ADA compliant and make appropriate ADA-compliant upgrades throughout Obed River Park.
- Addition of a multi-purpose building/event center at the Community Complex.
- Update the playground equipment near Turner Complex at Centennial to meet ADA standards.
- Begin the repurposing construction of regulation baseball field at Centennial to youth or adult softball fields.
- Relocate the dog parks at Centennial as needed.
- Begin construction of splash pad-type play area at Centennial.
- Begin the process of adding more pickle ball courts at Centennial.
- Create a walkway from the new Hilltoppers property to Centennial.
- Repair pavement between Centennial park areas and in parking lots.
- Repair the siding at the Centennial Park field houses as needed.
- Maintenance vehicles appear to be driving on grass in locations at path intersections at the Soccer Complex. Installing large boulders, which could also be used as seating, could help reduce the problem
- Companion seating for bleachers is needed at the Soccer Complex.
- Increase signage at Meadow Park Lake's boat rental office, within the park along the road, and leading to the park.
- Add another ADA restroom facility at Soldiers Beach Trailhead at Meadow Park Lake.

**Long-term goals:**

- Make Obed River Park completely family-oriented.
- Add landscaping to provide shaded rest areas and improve the appearance of East Cumberland Community Park.
- Replace the roof at the Horseshoe Pavilion at Centennial.
- Provide shade trees around the perimeter of Garrison Park and the south side of the TAD Center.
- Provide loop walking trail with trail markers to indicate distance at the Soccer Complex.
- Provide playground area and picnic area with shelter for families at the Soccer Complex.
- Build a splash pad at Meadow Park Lake.
- Build rental cabins at Meadow Park Lake and expand the service in the park.
- Burying the utilities throughout Meadow Park Lake.
- Connect all the parks in Cumberland County through the design of a “loop trail.” This will provide visitors seamless bike and pedestrian connectivity to every park in the county.

Overall, consistent themes emerged as follows: the desire for greenways; additional bike trails, bike lanes, and walking trails, indoor and outdoor community pools, new playground equipment, access to waterways, additional courts for pickle ball, additional disc golf courses, aesthetic improvements to the farmer's markets, and increased marketing and signage. In summary, we find that Cumberland County residents desire connectivity and accessibility. Residents desire the ability to walk or bike to a local park in a safe and time efficient manner. Connecting the parks via trails or greenways would allow this as well as simultaneously increasing access to those who do not have means to drive to the parks. Top priorities also include community pools as the residents have to leave the county to enjoy pool usage; as well as improving access to existing facilities and natural areas. Other specific goals of Cumberland County include completing the Crossville Greenway and connecting the parks, completing the 127 bike lane, the Livingston Rd bike trail, adding a multi-purpose building/event center to the Community Complex, increasing marketing and signage across the board to bring people to Cumberland County Parks, and continuing to maintain and upgrade all parks and park facilities. The results of the public input will help the Parks and Recreation Department prioritize improvements that will benefit the entire community over the next 5 plus years.